

KVRI 6035 EC 30

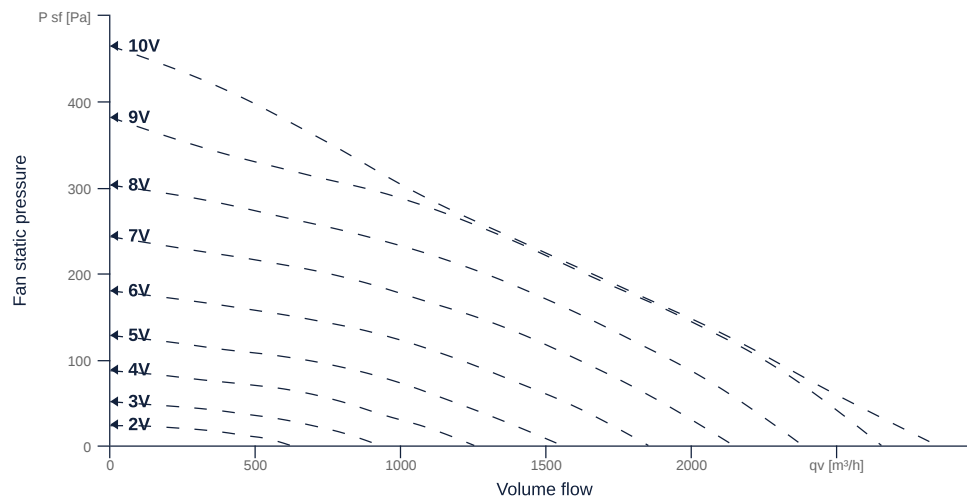
131437

- Backward curved radial impeller
- Swing out fan unit
- Galvanized sheet steel housing, double-walled, 25 mm mineral wool
- High efficiency EC motor, steplessly controllable
- Conveyed medium temperature up to 60 °C in continuous operation



MAP

Name	Value	Unit
Volume flow	0	m ³ /h
Pressure	0	Pa



to the product detail page

GENERAL DATA

Name	Value	Unit	Formula symbol
Labeling	CE, UKCA		
Duct size	600x350		WxH _{duct}
Pipe connection size (DN)	-		DN
Rated voltage (entire device)	230	V	U _{rated}
Phases (entire device)	1~		phase
Electrical protection (entire device)	6 A		fuse
Housing material	Galvanized steel		mat _{casing}
Impeller material	Plastic		mat _{impeller}
IP-protection class (entire device)	IPX4		IP _{compl}
IP-Protection class (terminal box)	IP44		IP _{ebox}
Weight	34.4	kg	m
Nominal air flow rate, nominal point m ³ /h	1155.6	m ³ /h	q _{v,nom}
Nominal external pressure, static	161.3	Pa	p _{s,nom}
Fan type	Radial		Fan _{type}
Category / Installation situation	A		cat

ERP DATA (LOT 6)

Name	Value	Unit	Formula symbol
Nominal air flow rate, nominal point m ³ /s	0.32	m ³ /s	q _{v,nom}
Actual electrical input power, nominal point	0.09	kW	P _{e,nom}
Face velocity, nominal point	1.5	m/s	v _{nom}
Nominal external pressure, static	161.3	Pa	p _{s,nom}
supply air fan static efficiency, nominal point	63.4	%	η _{es,SUP}
Enclosure sound level, nominal point	60	dB(A)	L _{WA2}
Rating	Product is compliant 2018		



to the product detail page

KVRI 6035 EC 30

131437

MAXIMAL DATA

Name	Value		Unit	Formula symbol
	50 Hz	60 Hz		
Max. power consumption (device)	164	164	W	P _{ed, max}
Max. operating current (device)	1.37	1.37	A	I _{ed, max}
Max. speed	1540	1540	1/min	n _{max}
Max. stat. efficiency	53.9	53.9	%	η _{es}
Max. fan efficiency	54.7	54.7	%	η _e
Max. flowrate	2845	2845	m ³ /h	Q _{v, max}
Max. stat pressure	465	465	Pa	p _{st, max}
Max. medium temperature	60	60	°C	T _{m, max}
Max. environment temperature	60	60	°C	T _{amb, max}
Min. environment temperature	-25	-25	°C	T _{amb, min}

MOTOR DATA

Name	Value		Unit	Formula symbol
	50 Hz	60 Hz		
Rated frequency (device)		50		f
Motor type		EC		phase
Control type		stepless-controlled		ctrltype
Installation type		ORM (Out)		install
Rotation direction		right		rotation
Isolation class		ISO B		ISOclass
Motor-protection		TEC		protectmotor
Protection class		IP54		IP _{motor}
Is pole-changeable		No		polexch
Type of power supply		AC 1-		pwr _{sup} motor
Rated voltage	230		V	U _{rated, f1}
Rated current	1.4		A	I _{rated, f1}
Shaft power	168		W	P _{out, f1}
Speed	1250		1/min	n _{f1}
Efficiency	65.5		%	η _{m, f1}
Min. temperature	-25		°C	T _{motor, min}
UL-Certification motor		UL recognized		ULcert

SMOKE EXTRACT DATA

Name	Value	Unit	Formula symbol
Fire resistance class	None		F _{class}

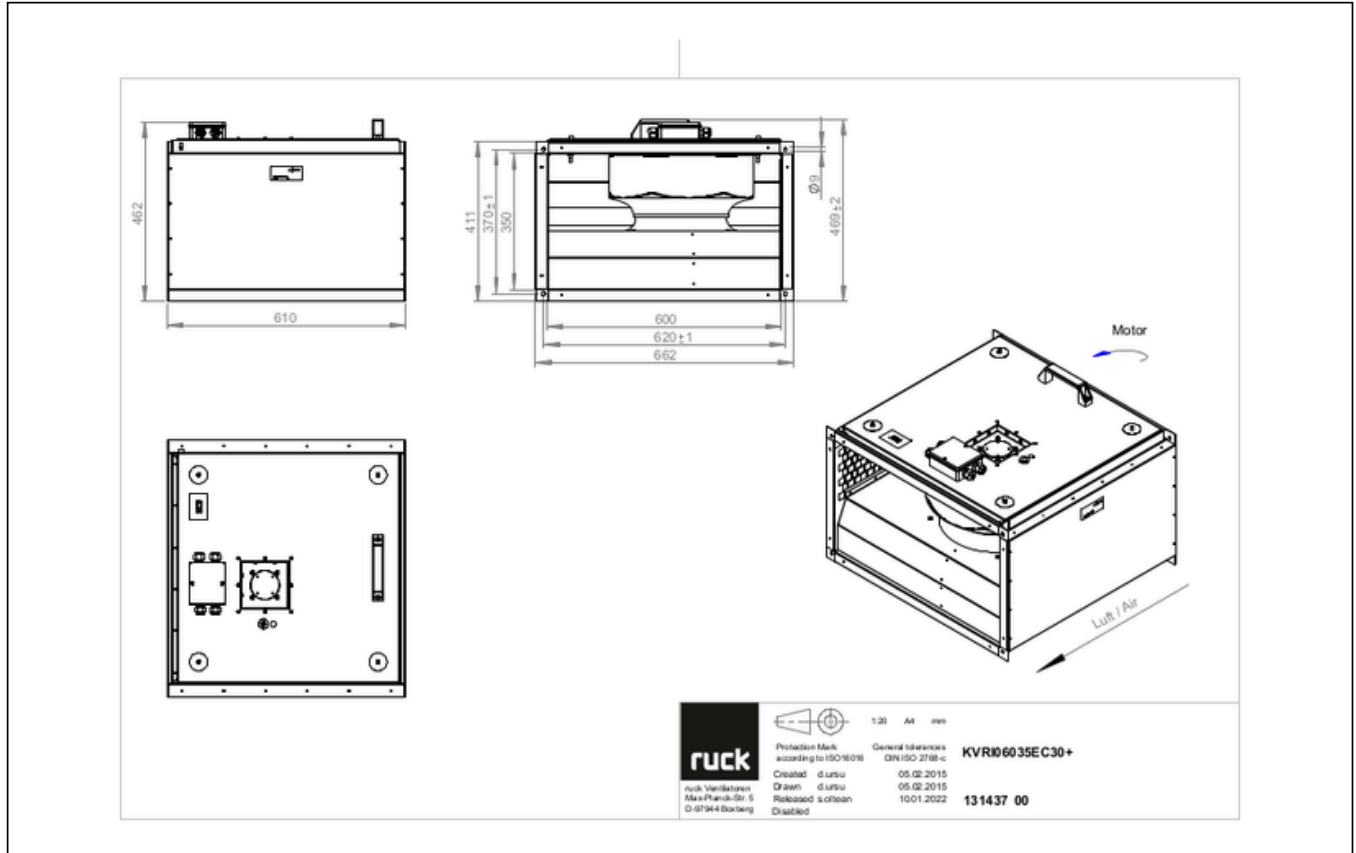


to the product detail page

KVRI 6035 EC 30

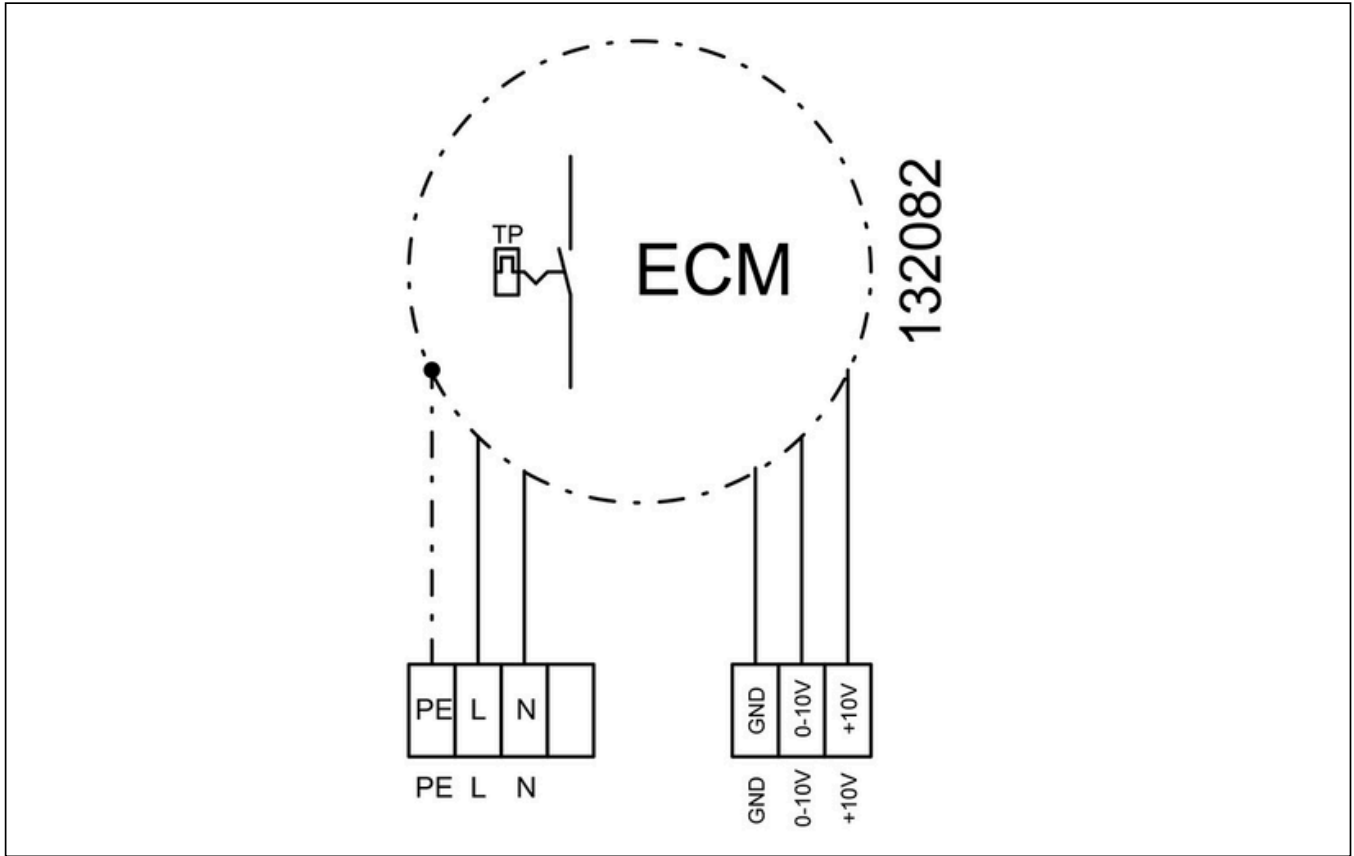
131437

CIRCUIT DIAGRAMS / DIMENSIONAL DRAWINGS



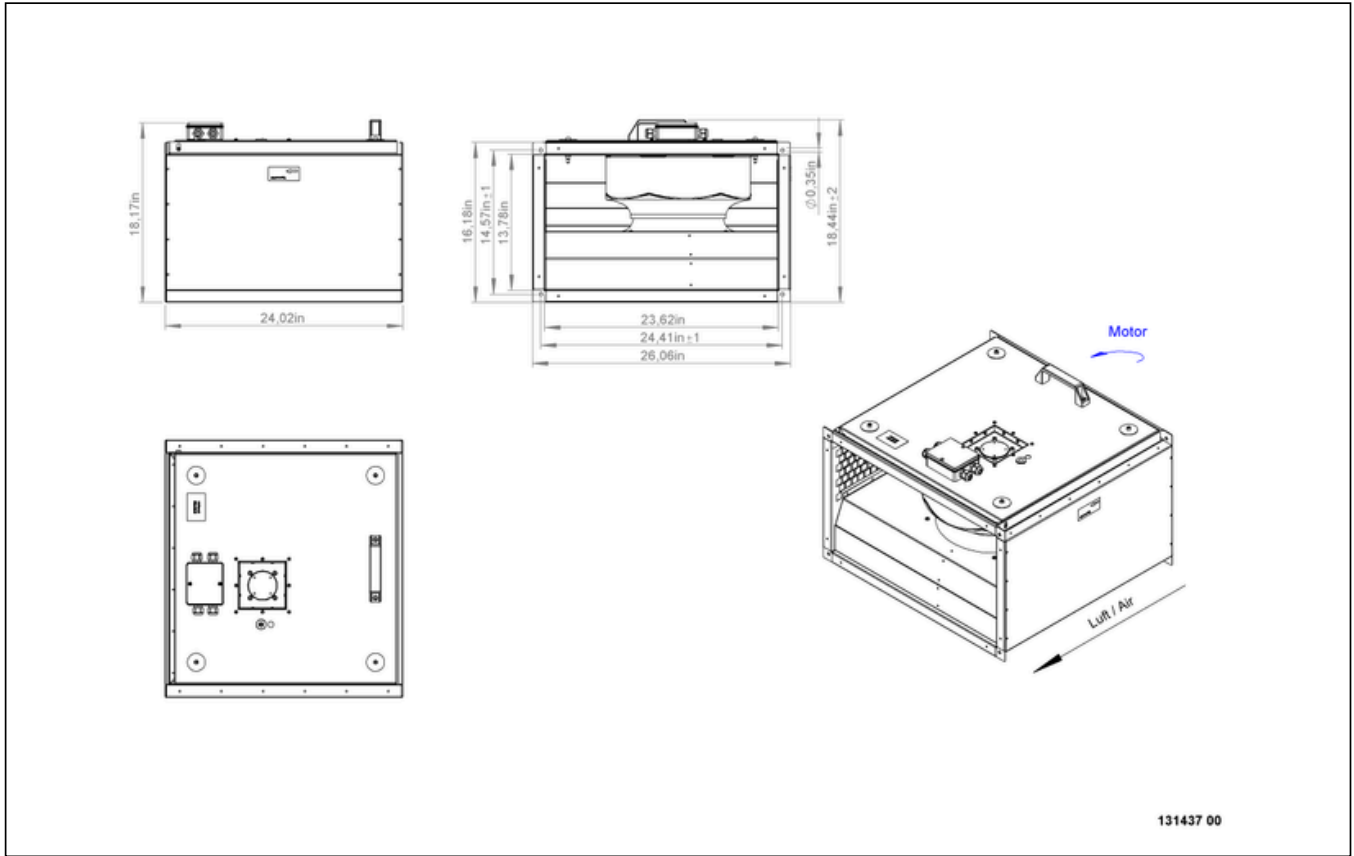
KVRI 6035 EC 30

131437



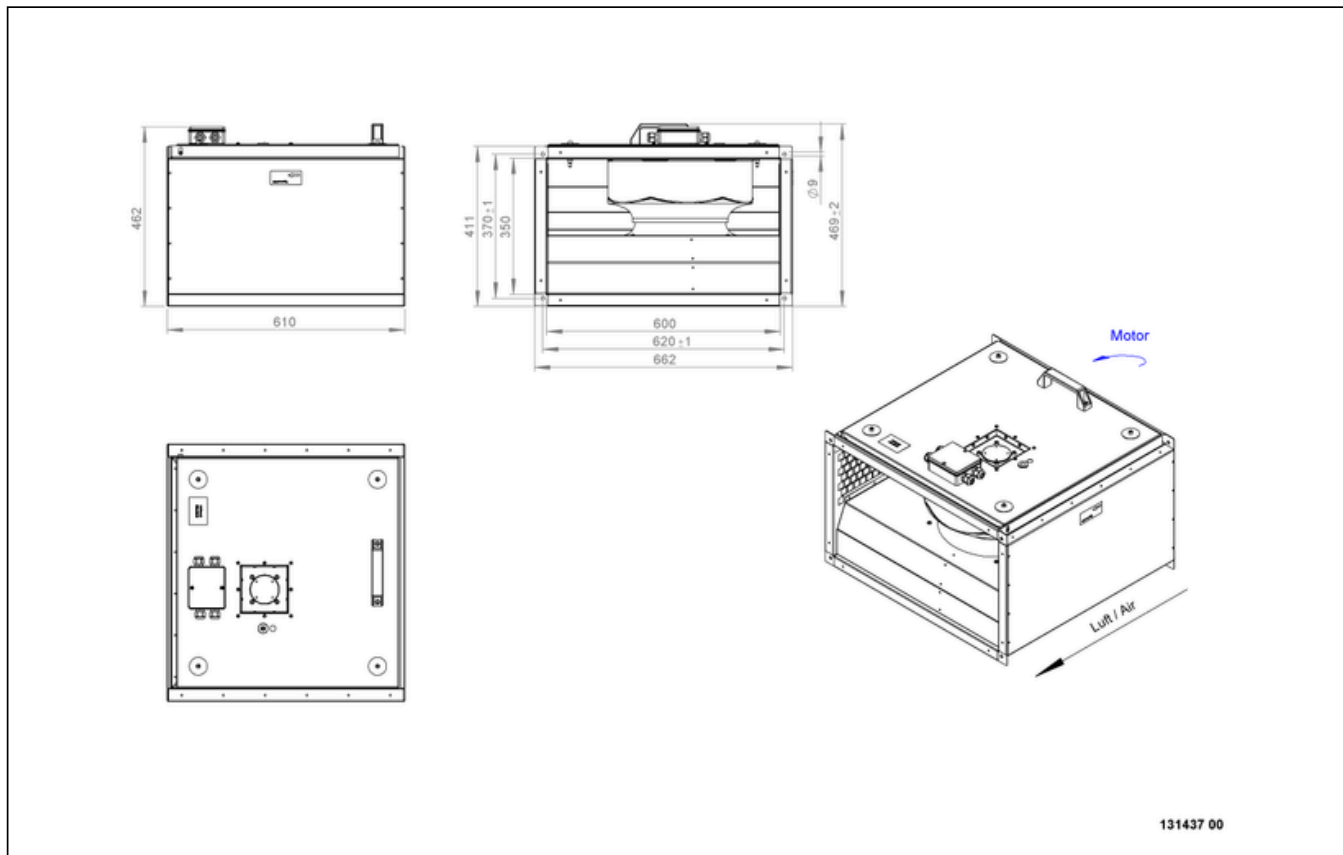
KVRI 6035 EC 30

131437



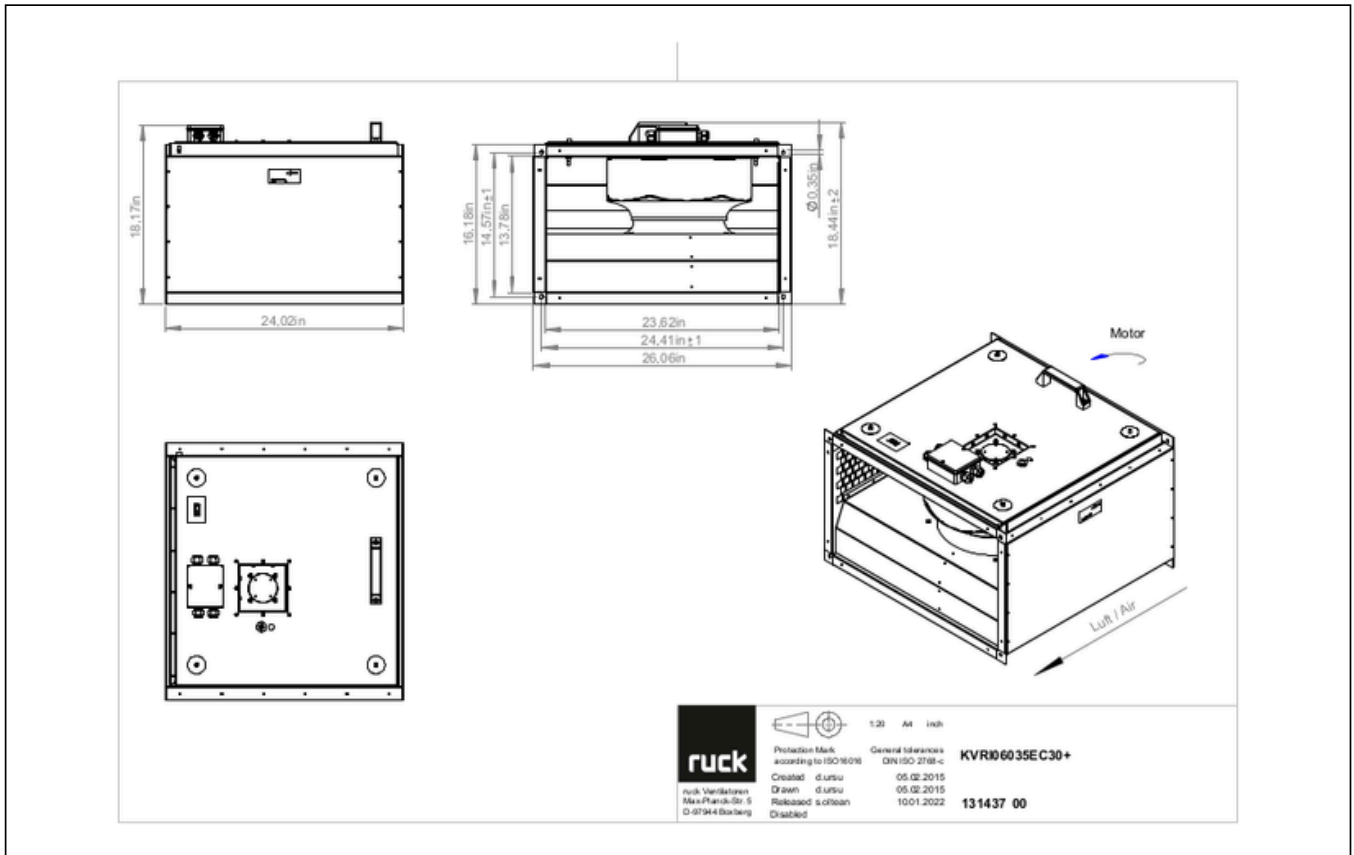
KVRI 6035 EC 30

131437



KVRI 6035 EC 30

131437



MECHANICAL ACCESSORIES

VS 6035 | 102808



- Duct connector, flexible
- Standard profile flange P20
- Galvanized steel sheet, plastic band (PVC)
- Temperature resistant up to 70 °C

VKK 6035 | 103892



- Automatic shutter
- Plastic, weather resistant
- Temperature resistant up to 70 °C



to the product detail page

KVRI 6035 EC 30

131437

ELECTRICAL ACCESSORIES

GS 03 | 107633



- Device switch
- $U_{max} = 400\text{ V}$, $I_{max} = 25\text{ A}$
- Switching capacity $400\text{ V } 3\text{-} = 5,5\text{ kW}$
- Protection class IP 55

CON P1000 | 115259



- Constant pressure control
- Actual value display possible via optional control unit
- Output 0-10 V DC + FC enable + setpoint reached
- Pressure setting by means of decade switch

MTP 20 | 128146



- Potentiometer 10 k Ω
- Switching contact 1A/250V AC - 2,5A/12V DC
- Max. ambient temperature 50 °C
- VDE

MTP 30 | 143289



- Stepped potentiometer 10 k Ω
- Step 1 + 2 settable 10 % - 100 % Vdc
- Step 3 100 % Vdc
- Supply voltage +10 Vdc

MTP 40 | 147359



- Potentiometer 10 k Ω
- Connection in terminal box
- Max. ambient temperature 50 °C
- PU: 20 pieces

MTP 50 | 153133



- Potentiometer with multifunction output
- 230 VAC $\pm 10\%$ / 50-60 Hz
- Selectable output: 1-10 VDC / 2-20 mA / 10-100 % PWM
- Min. and max. output value adjustable



to the product detail page