

KVR 6035 E4 31

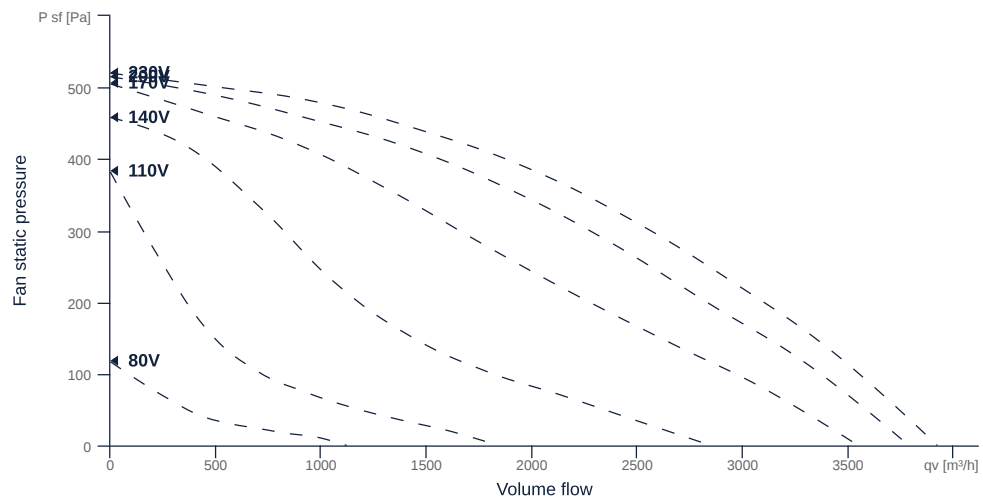
131312

- Backward curved radial impeller
- Removable fan unit
- Housing made of galvanized sheet steel
- Robust single phase AC motor, steplessly controllable
- Conveyed medium temperature up to 65 °C in continuous operation



MAP

Name	Value	Unit
Volume flow	0	m³/h
Pressure	0	Pa



to the product detail page

KVR 6035 E4 31

131312

ruck

GENERAL DATA

Name	Value	Unit	Formula symbol
Certifications	CE, UKCA		
Duct size	600x350		WxH _{duct}
Pipe connection size (DN)	-		DN
Rated voltage (entire device)	230	V	U _{rated}
Phases (entire device)	1~		phase
Electrical protection (entire device)	6 A		fuse
Housing material	Galvanized steel		mat _{casing}
Impeller material	Plastic		mat _{impeller}
Weight	28.4	kg	m
Nominal air flow rate, nominal point m ³ /h	3016.8	m ³ /h	q _{v,nom}
Nominal external pressure, static	213	Pa	p _{s,nom}
Fan type	Radial		Fan _{type}
Category / Installation situation	A		cat

ERP DATA (LOT 6)

Name	Value	Unit	Formula symbol
Nominal air flow rate, nominal point m ³ /s	0.84	m ³ /s	q _{v,nom}
Actual electrical input power, nominal point	0.45	kW	P _{e,nom}
Face velocity, nominal point	4	m/s	v _{nom}
Nominal external pressure, static	213	Pa	p _{s,nom}
supply air fan static efficiency, nominal point	47.2	%	η _{es,SUP}
Highest external air leakage rate	0.18	%	
Enclosure sound level, nominal point	74	dB(A)	L _{WA2}
Rating	Product is compliant 2018		



MAXIMAL DATA

Name	Value		Unit	Formula symbol
	50 Hz	60 Hz		
Max. power consumption (device)	453	633	W	P _{ed, max}
Max. operating current (device)	3.05	3.11	A	I _{ed, max}
Max. speed	1450	1710	1/min	n _{max}
Max. stat. efficiency	46	42	%	η _{es}
Max. fan efficiency	46.7	42.4	%	η _e
Max. flowrate	3920	4400	m ³ /h	Q _{v, max}
Max. stat pressure	520	720	Pa	p _{st, max}
Max. medium temperature	65	60	°C	T _{m, max}
Max. environment temperature	65	60	°C	T _{amb, max}
Min. environment temperature	-25	-25	°C	T _{amb, min}
Min. voltage	80	80	V	U _{min}

MOTOR DATA

Name	Value		Unit	Formula symbol
	50 Hz	60 Hz		
Rated frequency (device)		50		f
Motor type		AC 1~		phase
Control type		stepless-controlled		ctrltype
Installation type		ORM (Out)		install
Rotation direction		right		rotation
Isolation class		ISO F		ISOclass
Motor-protection		TAE		protectmotor
Protection class		IP54		IP _{motor}
Is pole-changeable		No		polexch
Type of power supply		AC 1~		pwrSUP _{motor}
Capacity capacitor		9	μF	C _{cond}
Voltage capacitor		400	V	VU _{cond}
Number of poles (1)		4.000000		num poles _{w1}
Rated voltage	230		V	U _{rated, f1}
Rated current	2.33		A	I _{rated, f1}
Speed	1340		1/min	n _{f1}
Starting current	5.9		A	I _{start, f1}
Min. temperature	-40		°C	T _{motor, min}
UL-Certification motor		None		UL _{cert}

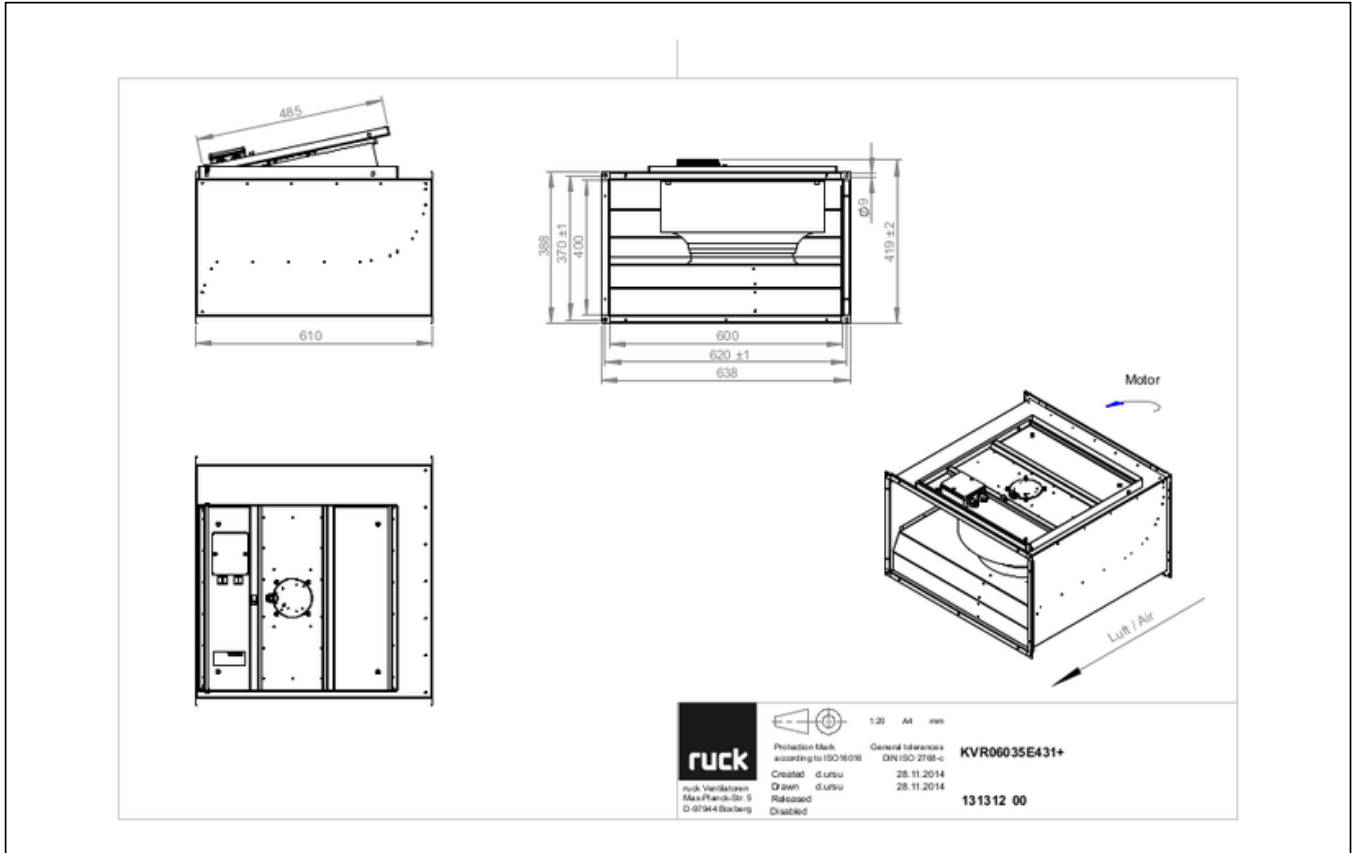


to the product detail page

KVR 6035 E4 31

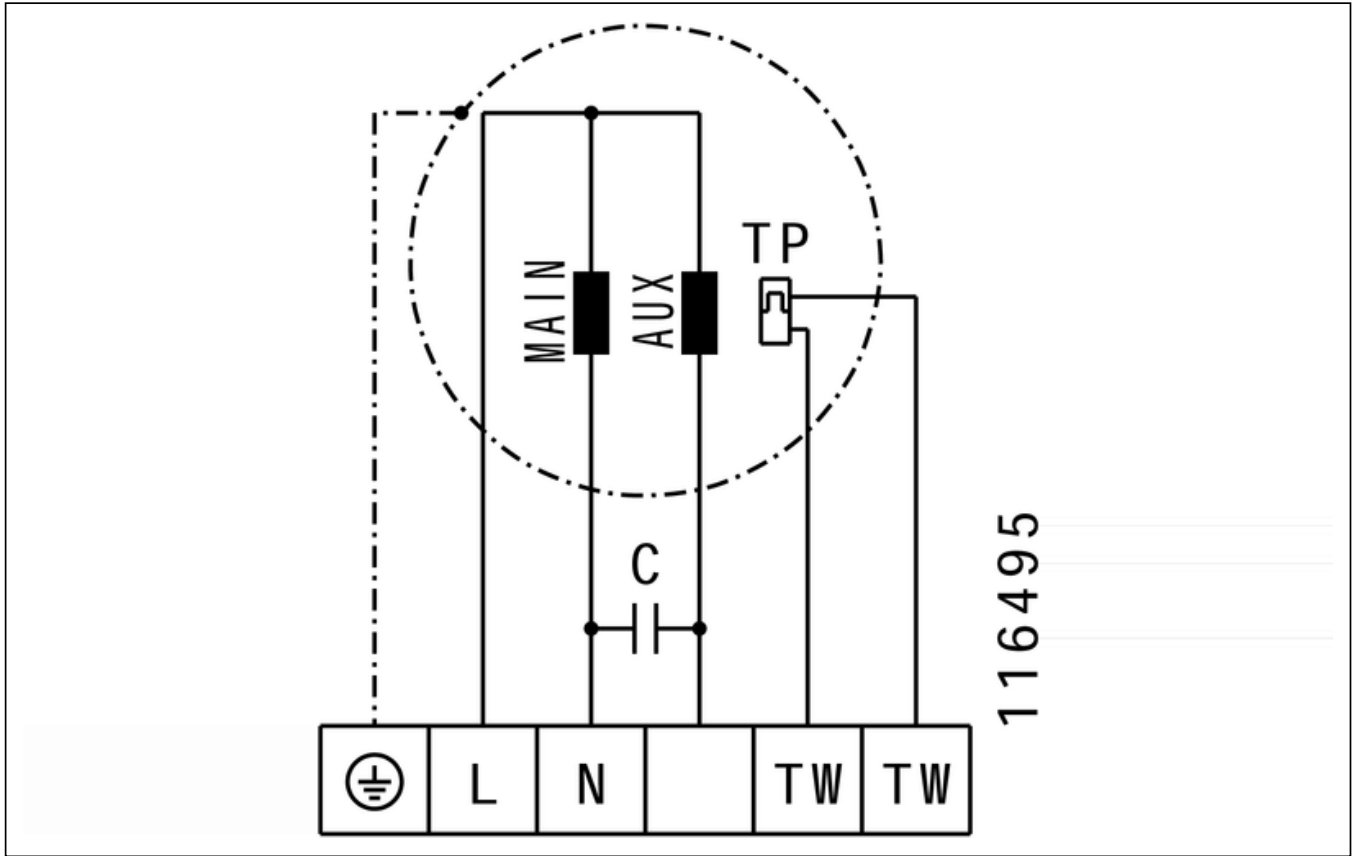
131312

CIRCUIT DIAGRAMS / DIMENSIONAL DRAWINGS



KVR 6035 E4 31

131312



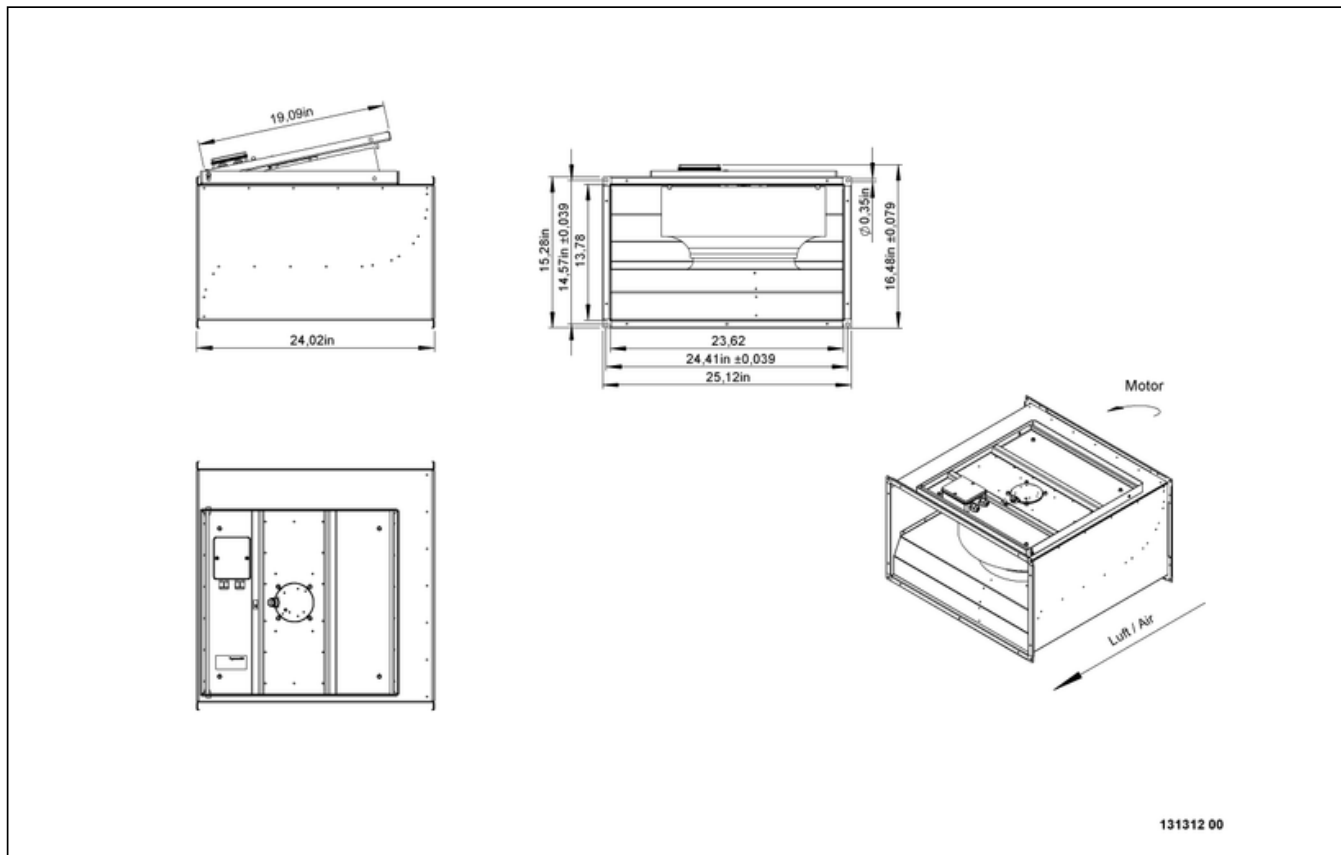
116495



to the product detail page

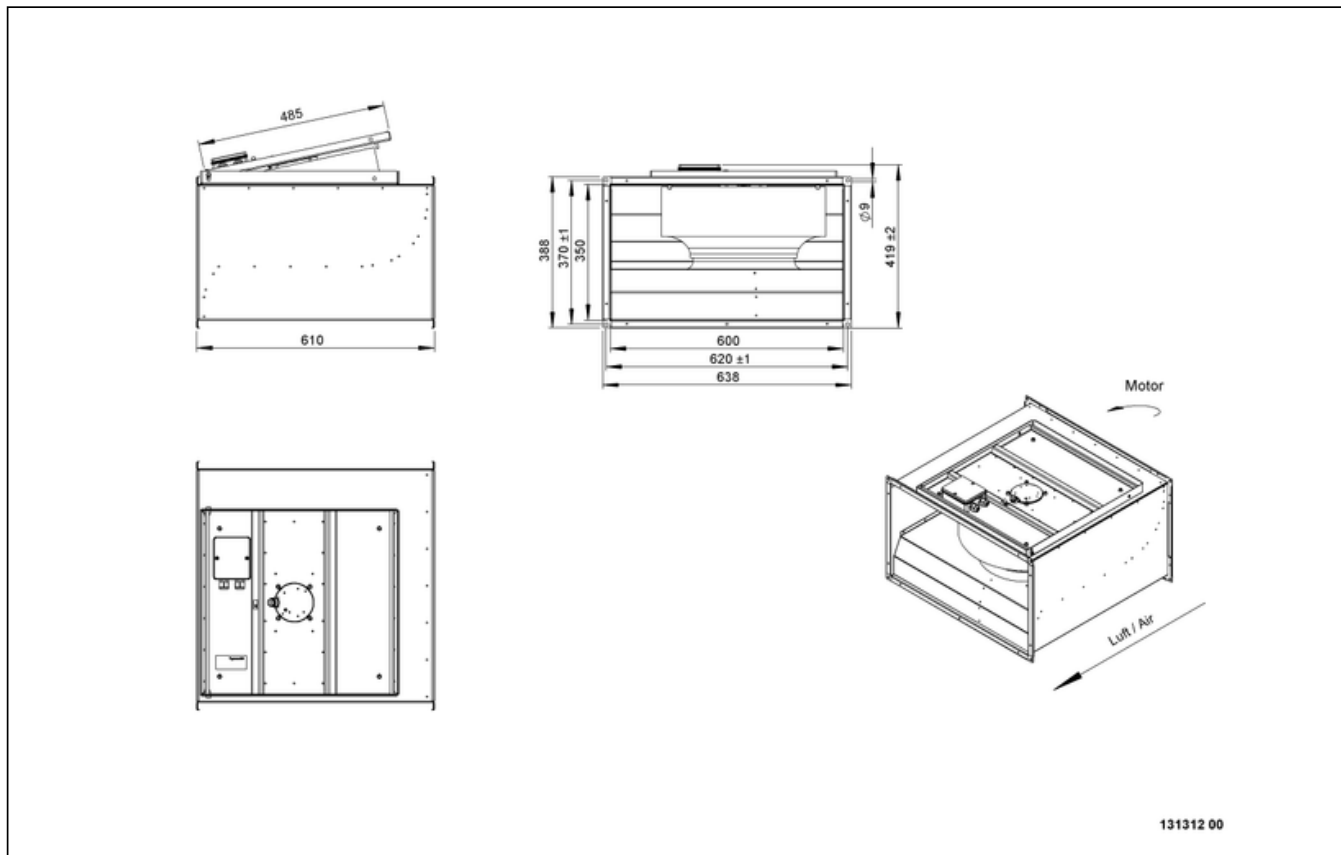
KVR 6035 E4 31

131312



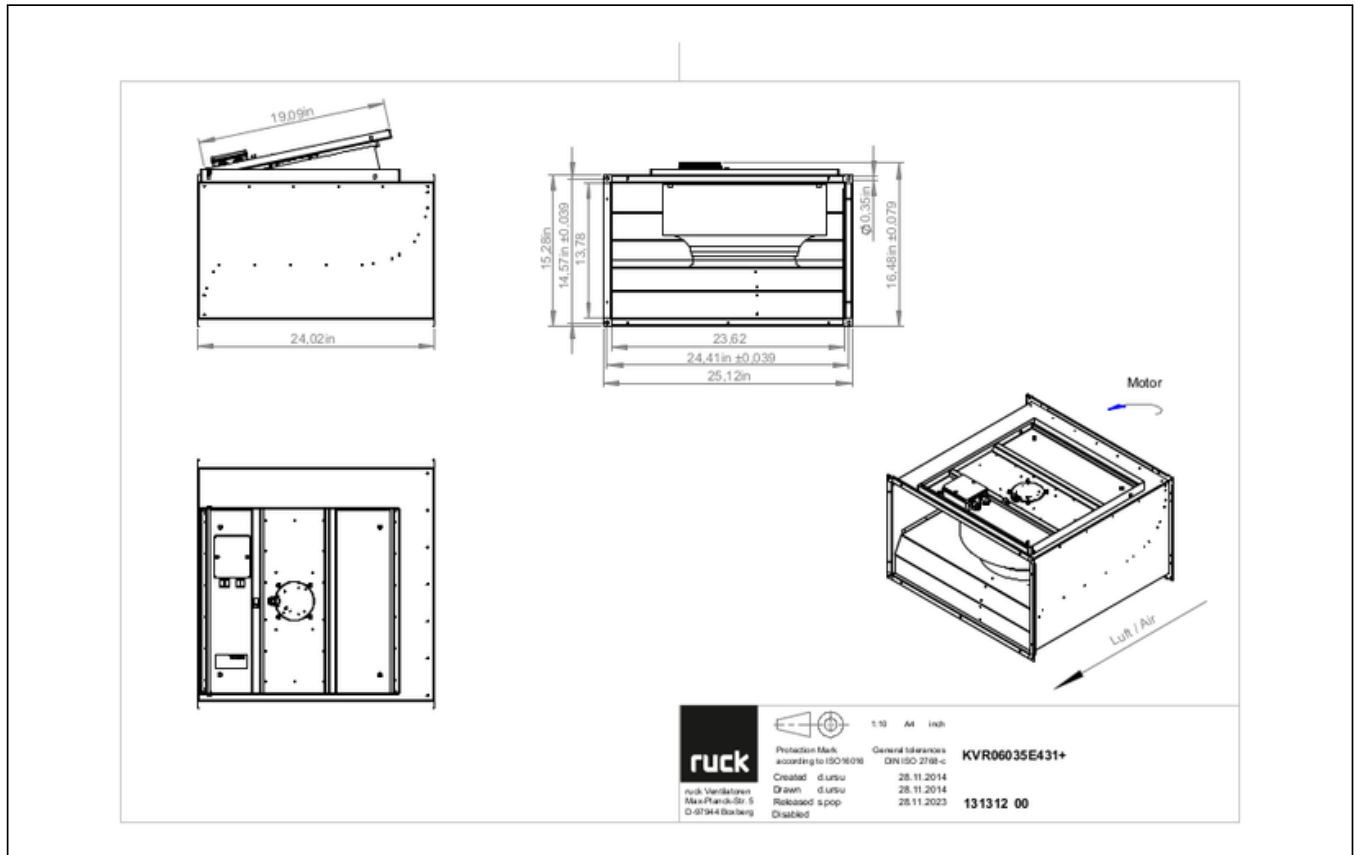
KVR 6035 E4 31

131312



KVR 6035 E4 31

131312



MECHANICAL ACCESSORIES

VS 6035 | 102808



- Duct connector, flexible
- Standard profile flange P20
- Galvanized steel sheet, plastic band (PVC)
- Temperature resistant up to 70 °C

VKK 6035 | 103892



- Automatic shutter
- Plastic, weather resistant
- Temperature resistant up to 70 °C



to the product detail page

KVR 6035 E4 31

131312

ELECTRICAL ACCESSORIES

GS 01 | 102787



- Isolator switch
- U_{max} = 400 V, 50/60 Hz
- Switching capacity 400 V 3~ = 5,5 kW
- I_{max} = 16 A

TEM 035 | 103502



- 5-step transformer
- 230 V, 50/60 Hz, 3,5 A
- Output voltage: 230-190-170-140-110-80-0 V
- Protection class IP 54

TES 035 02 | 146195



- 5-step transformer
- 230 V, 50/60 Hz, 3,5 A
- Without housing, control cabinet installation
- Protection class IP 20



to the product detail page