

KVR 6035 E4 30

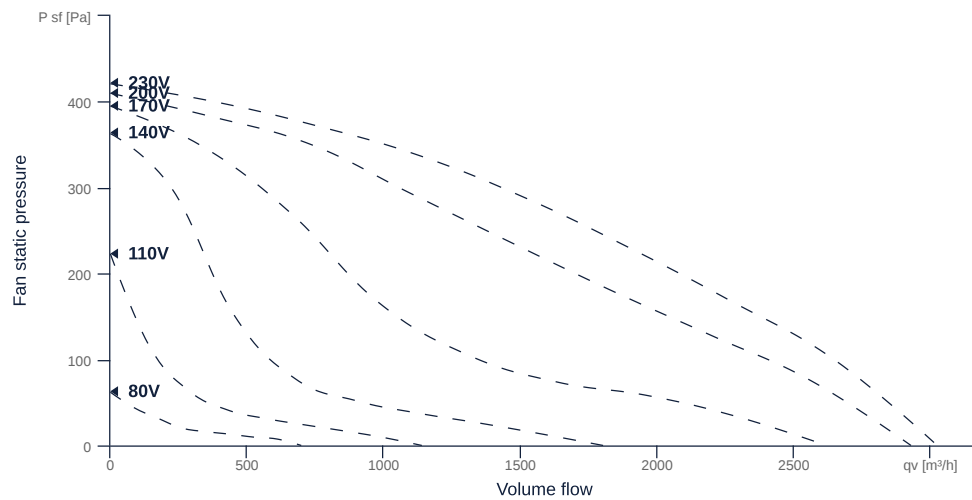
131309

- Backward curved radial impeller
- Removable fan unit
- Housing made of galvanized sheet steel
- Robust single phase AC motor, steplessly controllable
- Conveyed medium temperature up to 40 °C in continuous operation



MAP

| Name | Value | Unit |
|-------------|-------|------|
| Volume flow | 0 | m³/h |
| Pressure | 0 | Pa |



to the product detail page

KVR 6035 E4 30

131309

ruck

GENERAL DATA

| Name | Value | Unit | Formula symbol |
|--|------------------|-------------------|-------------------------|
| Certifications | CE, UKCA | | |
| Duct size | 600x350 | | WxH _{duct} |
| Pipe connection size (DN) | - | | DN |
| Rated voltage (entire device) | 230 | V | U _{rated} |
| Phases (entire device) | 1~ | | phase |
| Electrical protection (entire device) | 6 A | | fuse |
| Housing material | Galvanized steel | | mat _{casing} |
| Impeller material | Plastic | | mat _{impeller} |
| IP-protection class (entire device) | IPX4 | | IP _{compl} |
| IP-Protection class (terminal box) | IP44 | | IP _{ebox} |
| Weight | 24 | kg | m |
| Nominal air flow rate, nominal point m ³ /h | 2502 | m ³ /h | q _{v,nom} |
| Nominal external pressure, static | 126 | Pa | p _{s,nom} |
| Fan type | Radial | | Fan _{type} |
| Category / Installation situation | A | | cat |

ERP DATA (LOT 6)

| Name | Value | Unit | Formula symbol |
|--|---------------------------|-------------------|---------------------|
| Nominal air flow rate, nominal point m ³ /s | 0.7 | m ³ /s | q _{v,nom} |
| Actual electrical input power, nominal point | 0.24 | kW | P _{e,nom} |
| Face velocity, nominal point | 3.31 | m/s | v _{nom} |
| Nominal external pressure, static | 126 | Pa | p _{s,nom} |
| supply air fan static efficiency, nominal point | 45.7 | % | η _{es,SUP} |
| Enclosure sound level, nominal point | 69 | dB(A) | L _{WA2} |
| Rating | Product is compliant 2018 | | |



MAXIMAL DATA

| Name | Value | Unit | Formula symbol |
|---------------------------------|-------|-------------------|----------------|
| Max. power consumption (device) | 256 | W | $P_{ed, max}$ |
| Max. operating current (device) | 1.38 | A | $I_{ed, max}$ |
| Max. speed | 1460 | 1/min | n_{max} |
| Max. stat. efficiency | 46.5 | % | η_{es} |
| Max. fan efficiency | 46.8 | % | η_e |
| Max. flowrate | 3020 | m ³ /h | $q_{v, max}$ |
| Max. stat pressure | 420 | Pa | $p_{sf, max}$ |
| Max. medium temperature | 40 | °C | T_m, max |
| Max. environment temperature | 40 | °C | $T_{amb, max}$ |
| Min. environment temperature | -25 | °C | $T_{amb, min}$ |
| Min. voltage | 80 | V | U_{min} |

MOTOR DATA

| Name | Value | | Unit | Formula symbol |
|--------------------------|-------|---------------------|-------|------------------|
| | 50 Hz | 60 Hz | | |
| Rated frequency (device) | | 50 | | f |
| Motor type | | AC 1- | | phase |
| Control type | | stepless-controlled | | ctrltype |
| Installation type | | ORM (Out) | | install |
| Rotation direction | | right | | rotation |
| Isolation class | | ISO F | | ISOclass |
| Motor-protection | | TAI | | protectmotor |
| Protection class | | IP44 | | IPmotor |
| Is pole-changeable | | No | | polexch |
| Type of power supply | | AC 1- | | pwrsupmotor |
| Capacity capacitor | | 6 | μF | Ccond |
| Voltage capacitor | | 400 | V | VUcond |
| Number of poles (1) | | 4.000000 | | num polesw1 |
| Rated voltage | 230 | | V | $U_{rated, f1}$ |
| Rated current | 1.18 | | A | $I_{rated, f1}$ |
| Speed | 1330 | | 1/min | n_{f1} |
| Starting current | 2.2 | | A | $I_{start, f1}$ |
| Min. temperature | -25 | | °C | $T_{motor, min}$ |
| UL-Certification motor | | None | | ULcert |

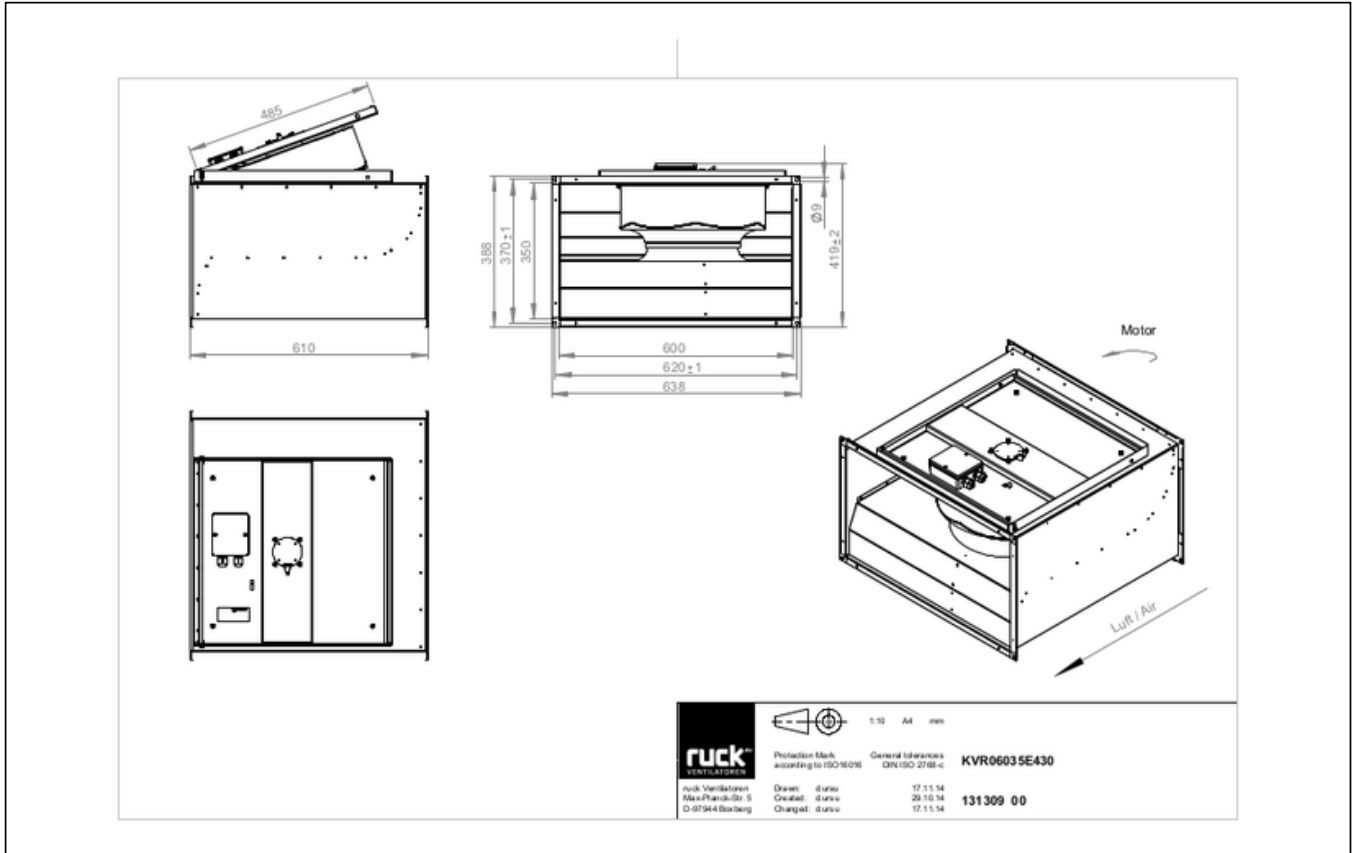


to the product detail page

KVR 6035 E4 30

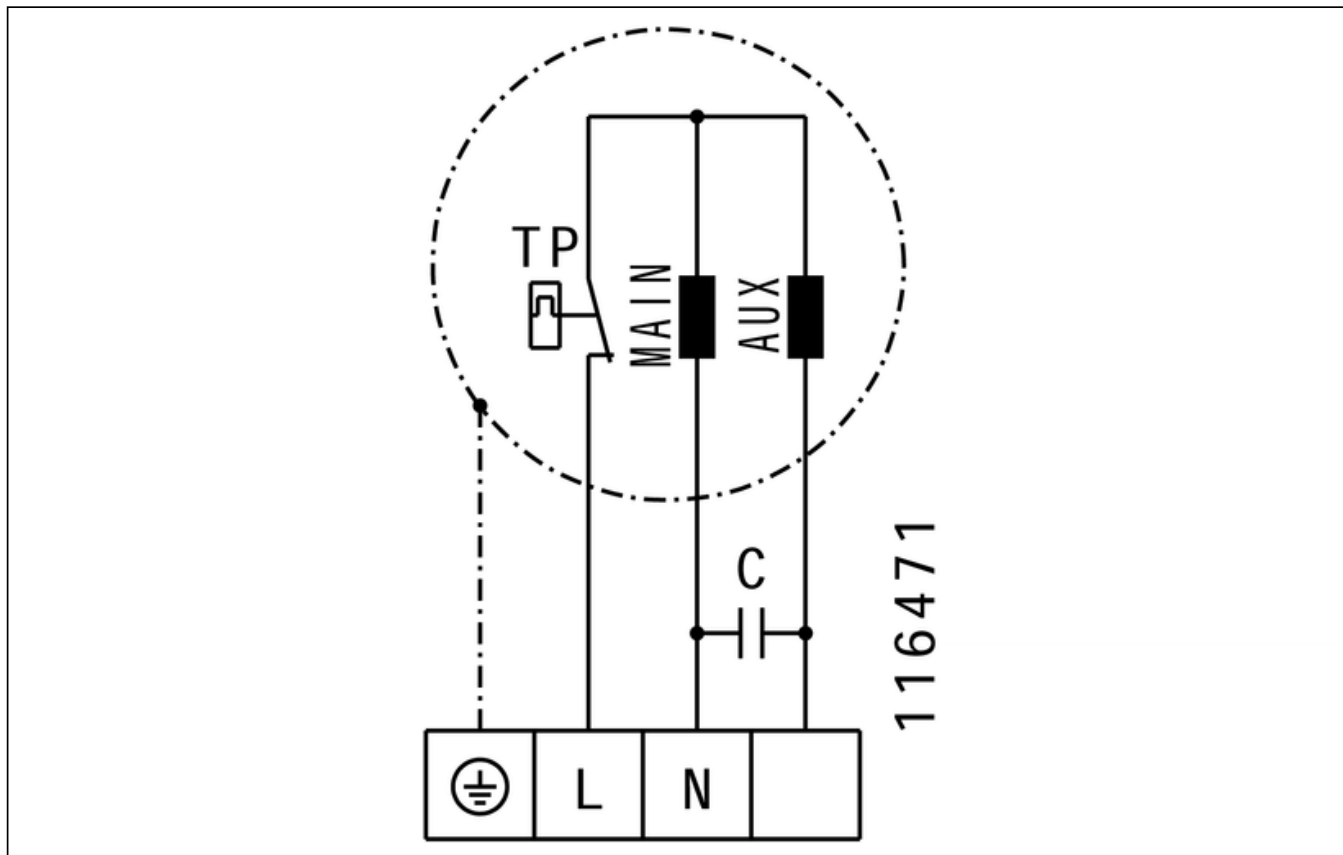
131309

CIRCUIT DIAGRAMS / DIMENSIONAL DRAWINGS



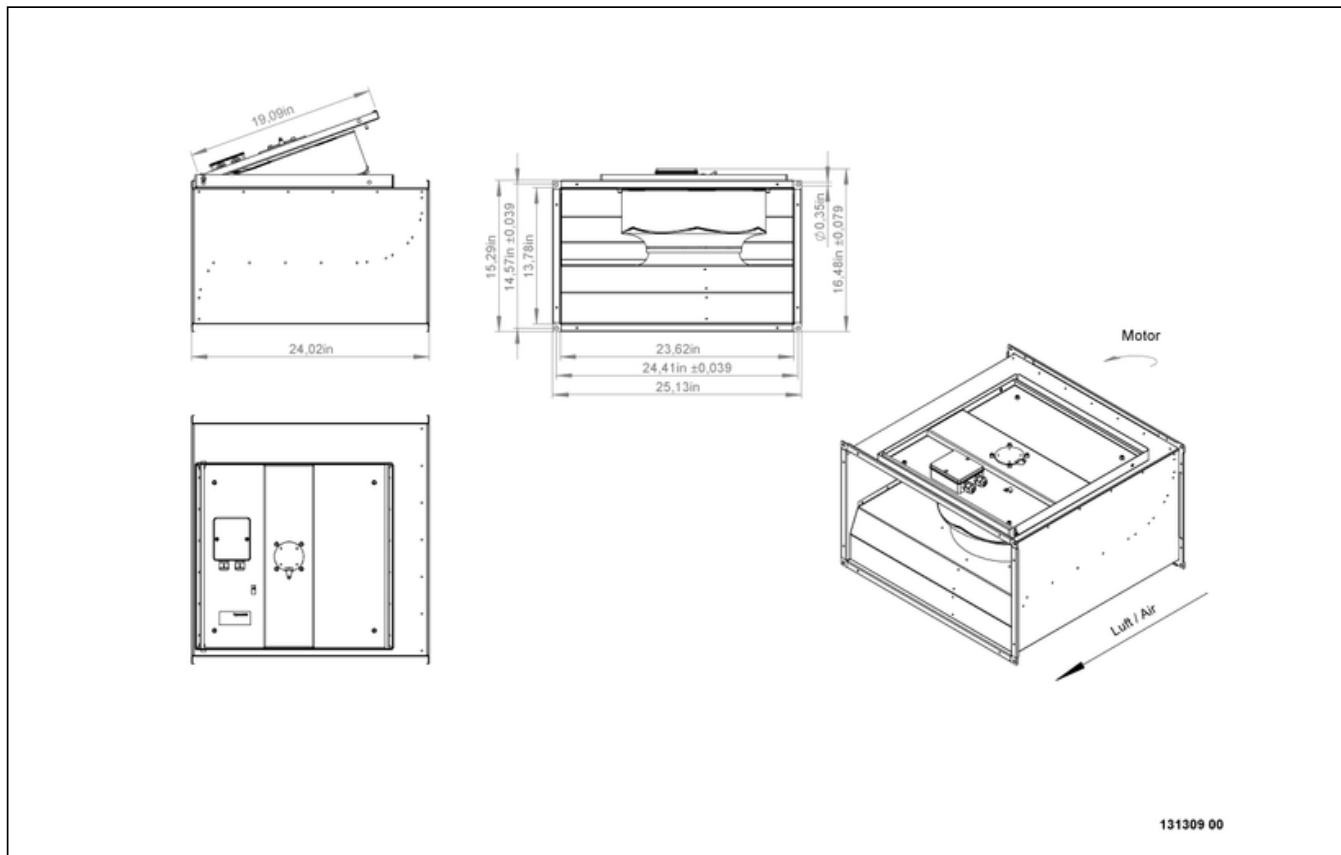
KVR 6035 E4 30

131309



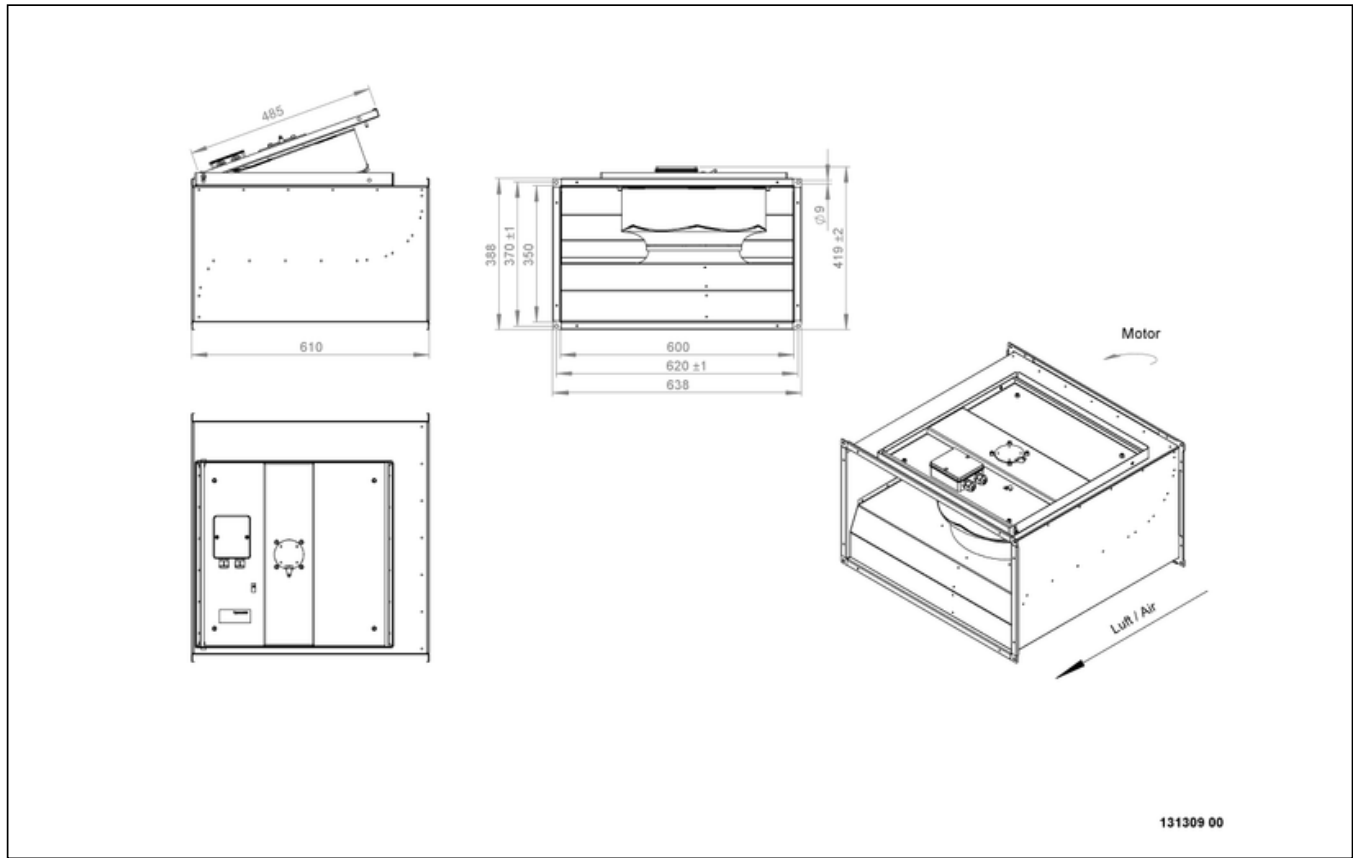
KVR 6035 E4 30

131309



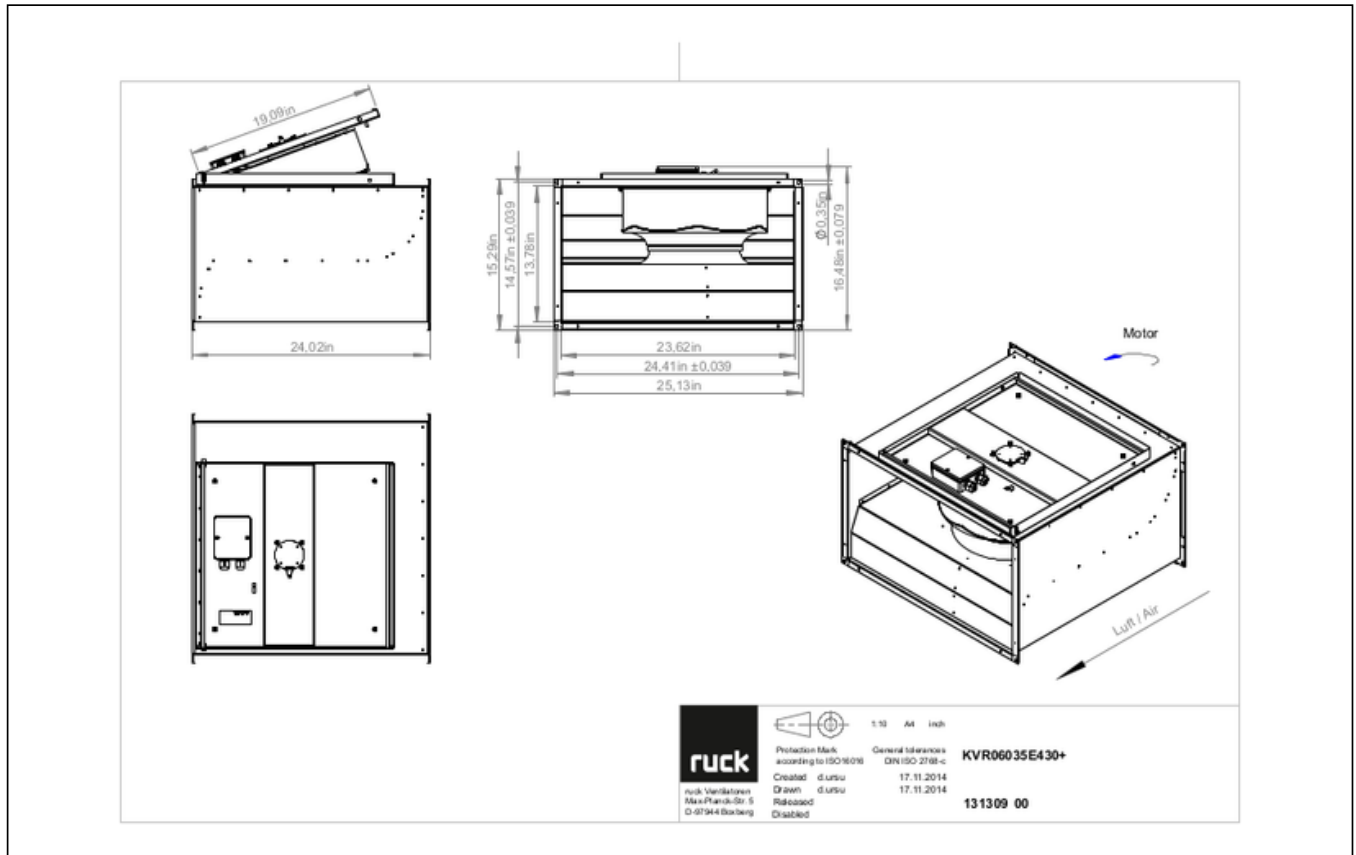
KVR 6035 E4 30

131309



KVR 6035 E4 30

131309



MECHANICAL ACCESSORIES

VS 6035 | 102808



- Duct connector, flexible
- Standard profile flange P20
- Galvanized steel sheet, plastic band (PVC)
- Temperature resistant up to 70 °C

VKK 6035 | 103892



- Automatic shutter
- Plastic, weather resistant
- Temperature resistant up to 70 °C



to the product detail page

KVR 6035 E4 30

131309

ELECTRICAL ACCESSORIES

GS 01 | 102787



- Isolator switch
- $U_{max} = 400\text{ V}$, 50/60 Hz
- Switching capacity 400 V 3~ = 5,5 kW
- $I_{max} = 16\text{ A}$

MTY 2 | 103424



- Electronic controller
- Stepless
- 230 V ~, 50 Hz
- $I_{max} = 2\text{ A}$

TES 0145 | 111858



- Step transformer
- 230 V ~, 50/60 Hz

TEE 015 | 115893



- 5-step transformer
- 230 V ~, 50/60 Hz



to the product detail page