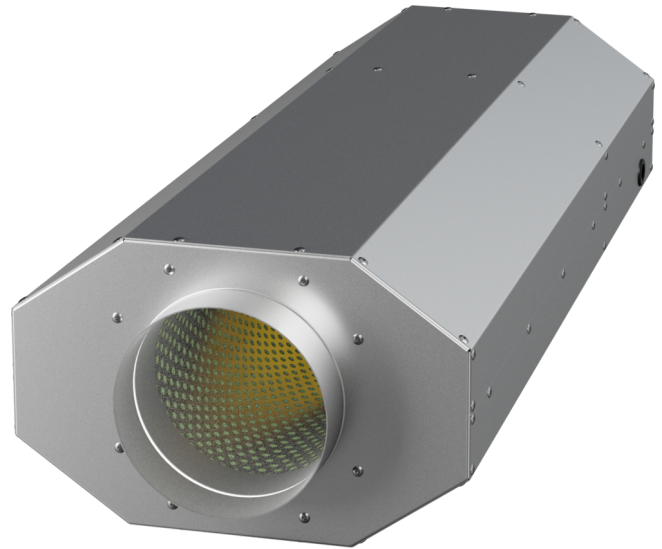


# EMI 160 E2M O 01

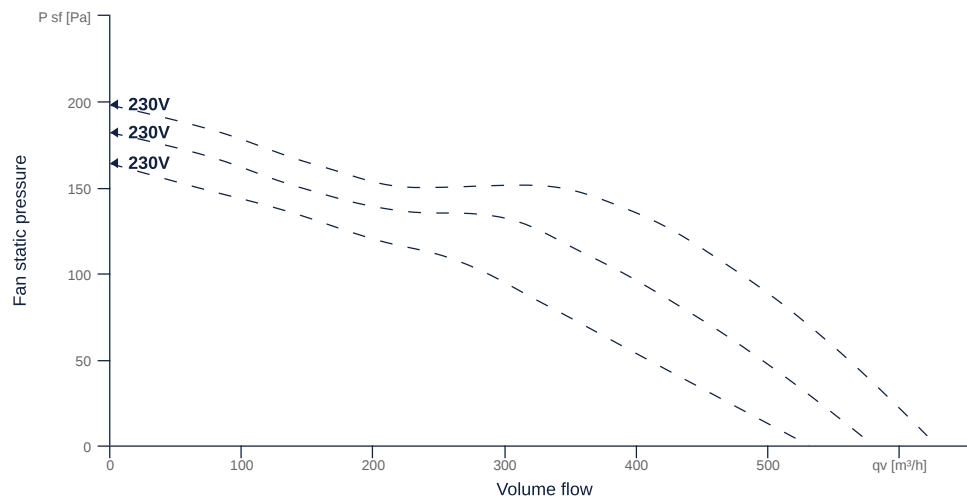
158109

- High-efficiency, insulated diagonal fan
- Optimum sound attenuation due to silencer
- Very compact housing made of galvanized sheet steel
- Robust AC motor, 3-steps controllable
- Highest aerodynamic efficiency
- Conveyed medium temperature up to 60 °C in continuous operation



## MAP

Name	Value	Unit
Volume flow	0	m³/h
Pressure	0	Pa



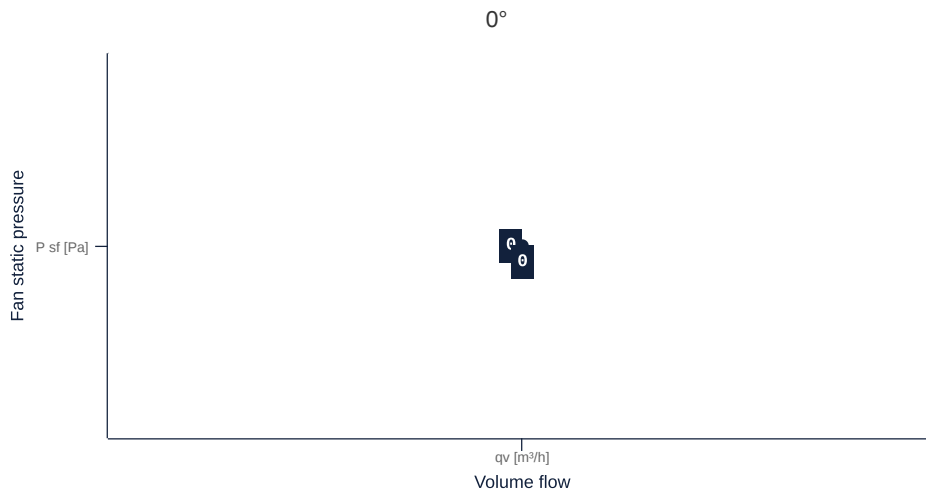
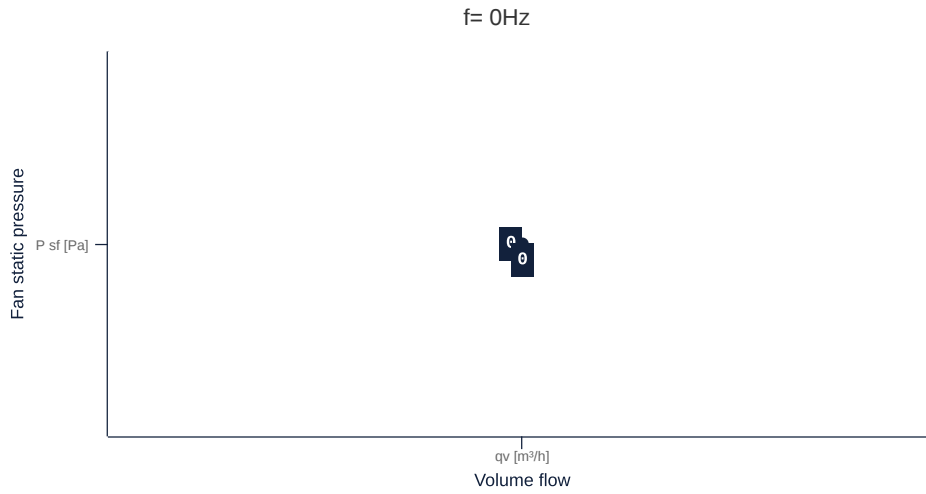
zur Produktseite

# EMI 160 E2M O 01

158109

## MAP

Name	Value	Unit
Volume flow	0	m³/h
Pressure	0	Pa



zur Produktseite

## GENERAL DATA

Name	Value	Unit	Formula symbol
ERP conformity	Yes		
Certifications	CE, UKCA		
Duct size	-		WxH <sub>duct</sub>
Pipe connection size (DN)	DN160		DN
Rated voltage (entire device)	230	V	U <sub>rated</sub>
Phases (entire device)	1~		phase
Electrical protection (entire device)	6 A		fuse
Housing material	Galvanized steel		mat <sub>casing</sub>
Impeller material	Plastic		mat <sub>impeller</sub>
Weight	10.1	kg	m
Fan type	Diagonal		Fan <sub>type</sub>
Category / Installation situation	B		cat

## MAXIMAL DATA

Name	Value	Unit	Formula symbol
Max. power consumption (device)	47	W	P <sub>ed, max</sub>
Max. operating current (device)	0.22	A	I <sub>ed, max</sub>
Max. speed	2830	1/min	n <sub>max</sub>
Max. stat. efficiency	30.6	%	η <sub>es</sub>
Max. fan efficiency	35	%	η <sub>e</sub>
Max. flowrate	630	m <sup>3</sup> /h	Q <sub>v, max</sub>
Max. stat pressure	200	Pa	p <sub>sf, max</sub>
Max. medium temperature	60	°C	T <sub>m, max</sub>
Max. environment temperature	60	°C	T <sub>amb, max</sub>
Min. environment temperature	-25	°C	T <sub>amb, min</sub>



# EMI 160 E2M O 01

158109

ruck

## MOTOR DATA

Name	Value		Unit	Formula symbol
	50 Hz	60 Hz		
Rated frequency (device)		50		f
Motor type		AC 1~		phase
Control type		step-controlled		ctrltype
Installation type		IRM (In)		install
Rotation direction		right		rotation
Isolation class		ISO F		ISOclass
Motor-protection		TAI		protectmotor
Protection class		IP00		IPmotor
Is pole-changeable		No		polexch
Type of power supply		AC 1~		pwrsupmotor
Capacity capacitor		1.5	μF	Ccond
Voltage capacitor		450	V	VUcond
Number of poles (1)		2.000000		num polesw1
Rated voltage	230		V	U <sub>rated, f1</sub>
Rated current	0.22		A	I <sub>rated, f1</sub>
Shaft power	25		W	P <sub>out, f1</sub>
UL-Certification motor		None		ULcert

## ERP DATA (LOT11)

Name	Value	Unit	Formula symbol
Speed at the energy efficiency optimum	2745	1/min	n <sub>opt</sub>
Efficiency level	44.5	%	N
Efficiency category	total		cat <sub>efficiency</sub>
Input power of the motor at the energy efficiency optimum	0.04	kW	P <sub>e, opt</sub>
Overall efficiency	69.3	%	η <sub>ges</sub>
Measurement category	B		meas cat
Fan pressure at energy efficiency optimum	150	Pa	p <sub>f, opt</sub>
Flowrate at energy efficiency optimum	397	m³/h	Q <sub>v, opt</sub>

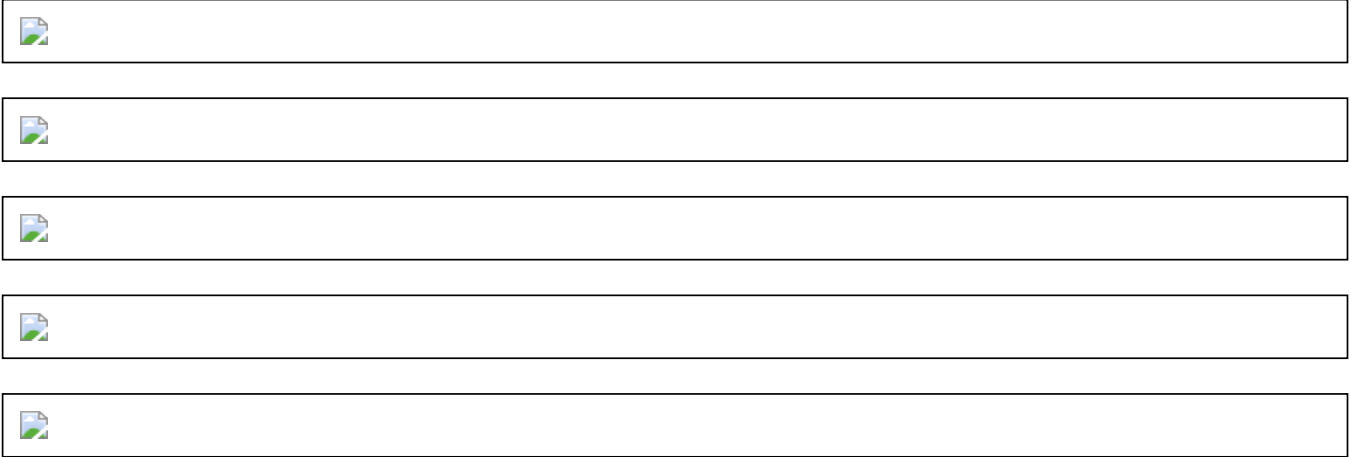


zur Produktseite

# EMI 160 E2M O 01

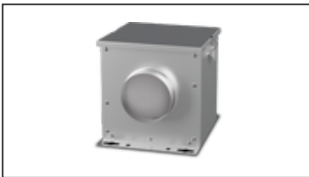
158109

## SCHALTPLÄNE / MASSZEICHNUNGEN



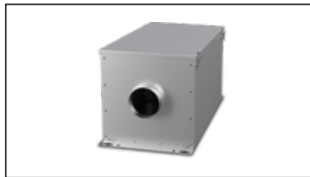
## MECHANICAL ACCESSORIES

**FV 160 | 112831**



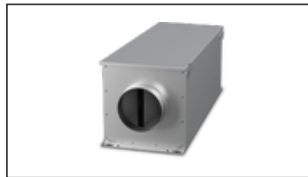
- Air filter box with mat filter ISO Coarse 45 % (G3)
- Toggle-type fastener

**FT 160 | 112841**



- Air filter box for pocket filter
- Toggle-type fastener
- Galvanized steel sheet housing
- Without filter

**FTW 160 | 112852**



- Air filter box with pocket filter M5
- Integrated warm water heating coil
- Galvanized steel sheet housing
- Toggle-type fastener

**RSK 160 | 102661**



- Back draught shutter for tube fitting
- Galvanized steel sheet housing
- Aluminum flaps

**RSK 160D | 113485**



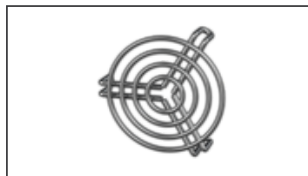
- Back draught shutter for tube fitting
- Galvanized steel sheet housing
- Aluminum flaps
- Integrated gasket

**VM 160 | 102649**



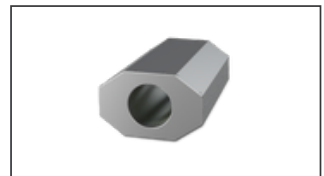
- Fast clamps for sound decoupling and sealing
- Galvanized steel sheet, 5 mm
- Neopren gasket
- 1 Pack = 2 pieces

**SG 160 01 | 102897**



- Protection grille for tube connection
- Galvanized wire

**SD 00160 500 R 05 | 158128**



- Rigid tube silencer
- Galvanized steel sheet
- Insulated with mineral wool



zur Produktseite

# EMI 160 E2M O 01

158109

---

## ELECTRICAL ACCESSORIES

GS 03 | 107633



- Device switch
- $U_{max} = 400\text{ V}$ ,  $I_{max} = 25\text{ A}$
- Switching capacity  $400\text{ V } 3\text{-} = 5,5\text{ kW}$
- Protection class IP 55

MTS 10 | 128145



- 3-step switch
- Max. ambient temperature  $50\text{ °C}$
- Surface and flush mounting
- IP 44



zur Produktseite