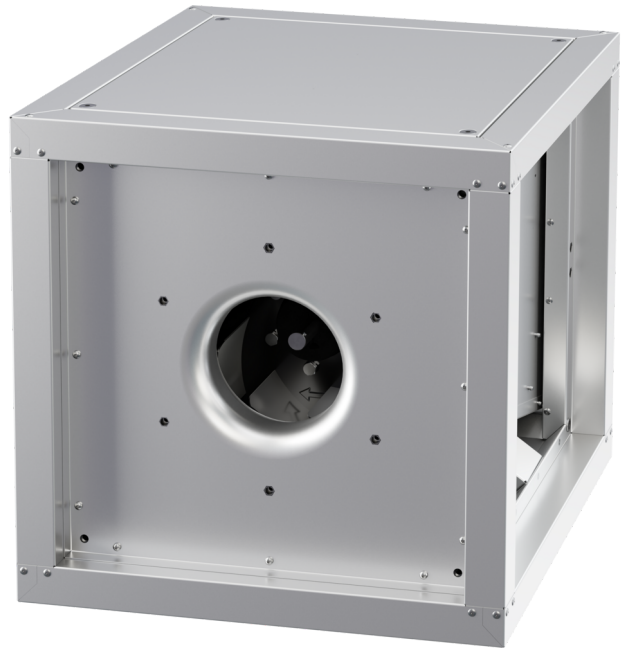


MPC 225 EC T30

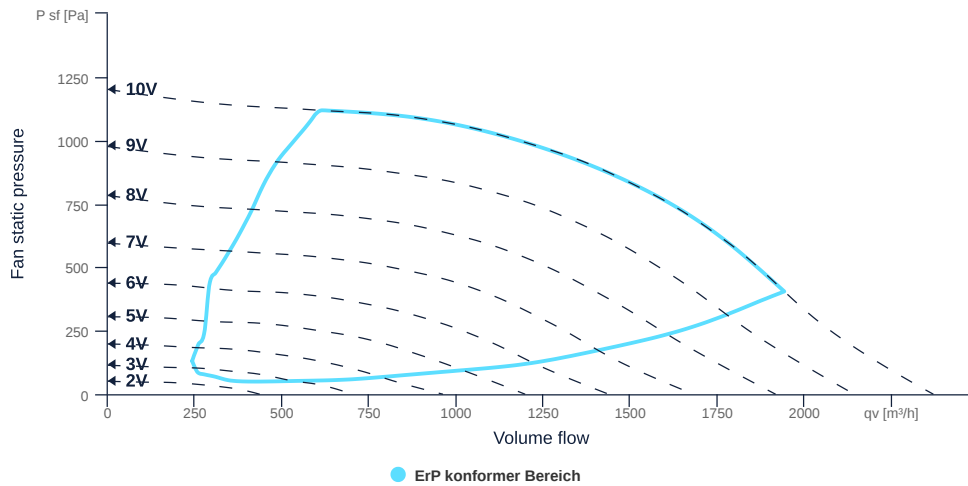
143077

- Backward curved radial impeller
- Removable side walls, variable discharge direction
- Sheet steel housing double-walled, 30 mm mineral wool
- EC motor outside the airflow, controllable
- Conveyed medium temperature up to 120 °C in continuous operation
- Housing bottom designed with integrated drain



MAP

Name	Value	Unit
Volume flow	0	m³/h
Pressure	0	Pa



zur Produktseite

MPC 225 EC T30

143077

ruck

GENERAL DATA

Name	Value	Unit	Formula symbol
ERP conformity	Yes		
Certifications	CE, UKCA		
Duct size	-		WxH _{duct}
Pipe connection size (DN)	DN355		DN
Rated voltage (entire device)	230	V	U _{rated}
Phases (entire device)	1~		phase
Electrical protection (entire device)	6 A		fuse
Housing material	Galvanized steel		mat _{casing}
Impeller material	Steel		mat _{impeller}
Weight	25	kg	m
Nominal air flow rate, nominal point m ³ /h	1940.4	m ³ /h	q _{v,nom}
Nominal external pressure, static	405	Pa	p _{s,nom}
Fan type	Radial		Fan _{type}
Category / Installation situation	A		cat

ERP DATA (LOT 6)

Name	Value	Unit	Formula symbol
Nominal air flow rate, nominal point m ³ /s	0.54	m ³ /s	q _{v,nom}
Actual electrical input power, nominal point	0.57	kW	P _{e,nom}
Face velocity, nominal point	3.99	m/s	V _{nom}
Nominal external pressure, static	405	Pa	p _{s,nom}
static efficiency of the extract fan, nominal point	38.52	%	η _{es,EHA}
Highest external air leakage rate	0.14	%	
Enclosure sound level, nominal point	79.7	dB(A)	L _{WA2}
Rating	Product is compliant 2018		

zur Produktseite



MPC 225 EC T30

143077

ruck

MAXIMAL DATA

Name	Value		Unit	Formula symbol
	50 Hz	60 Hz		
Max. power consumption (device)	687	687	W	$P_{ed, max}$
Max. operating current (device)	3.2	3.2	A	$I_{ed, max}$
Max. speed	3980	3980	1/min	n_{max}
Max. stat. efficiency	49.6	49.6	%	η_{es}
Max. fan efficiency	49.9	49.9	%	η_e
Max. flowrate	2370	2370	m ³ /h	$Q_{v, max}$
Max. stat pressure	1200	1200	Pa	$p_{sf, max}$
Max. medium temperature	120	120	°C	$T_{m, max}$
Max. environment temperature	50	50	°C	$T_{amb, max}$
Min. environment temperature	-20	-20	°C	$T_{amb, min}$

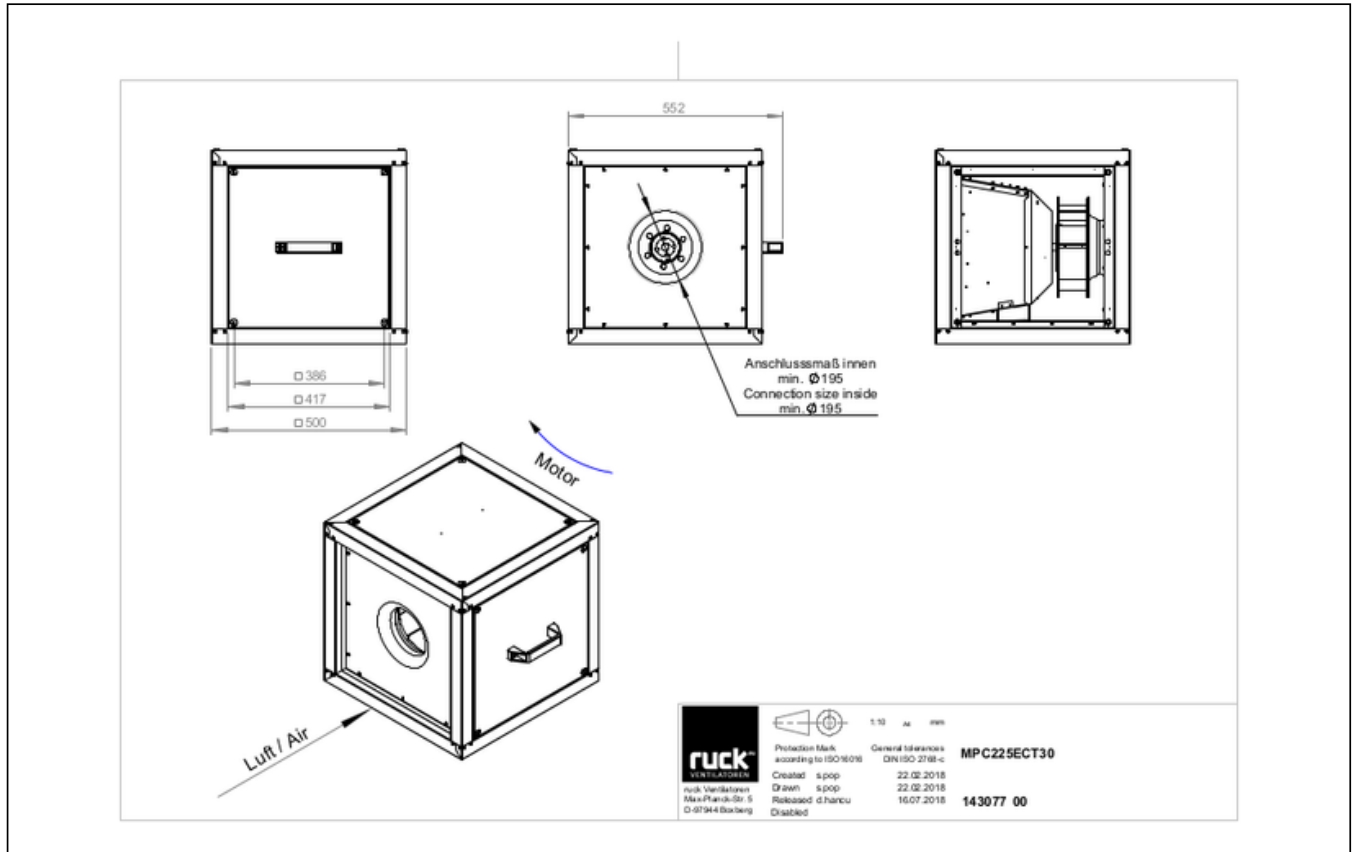


zur Produktseite

MPC 225 EC T30

143077

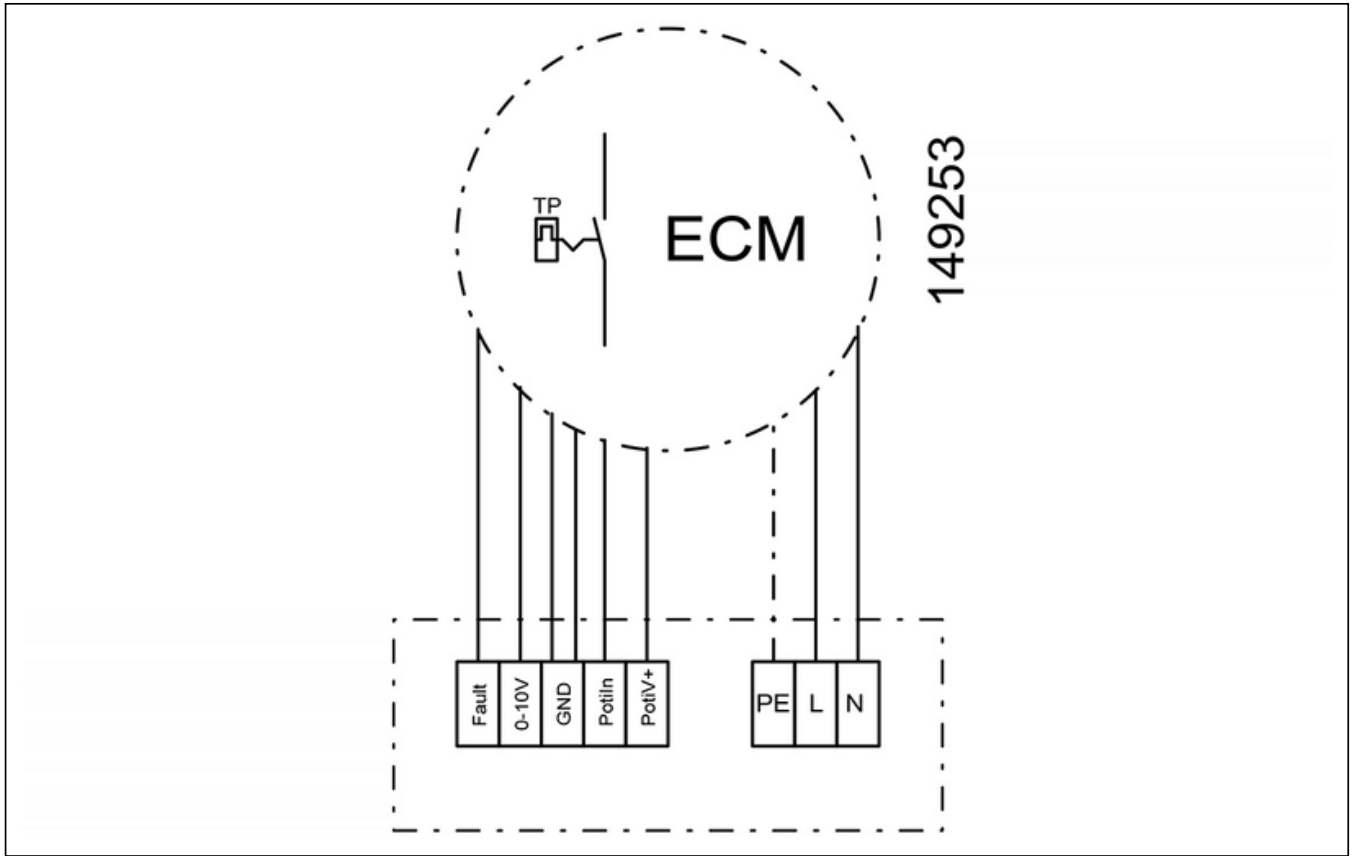
SCHALTPLÄNE / MASSZEICHNUNGEN



zur Produktseite

MPC 225 EC T30

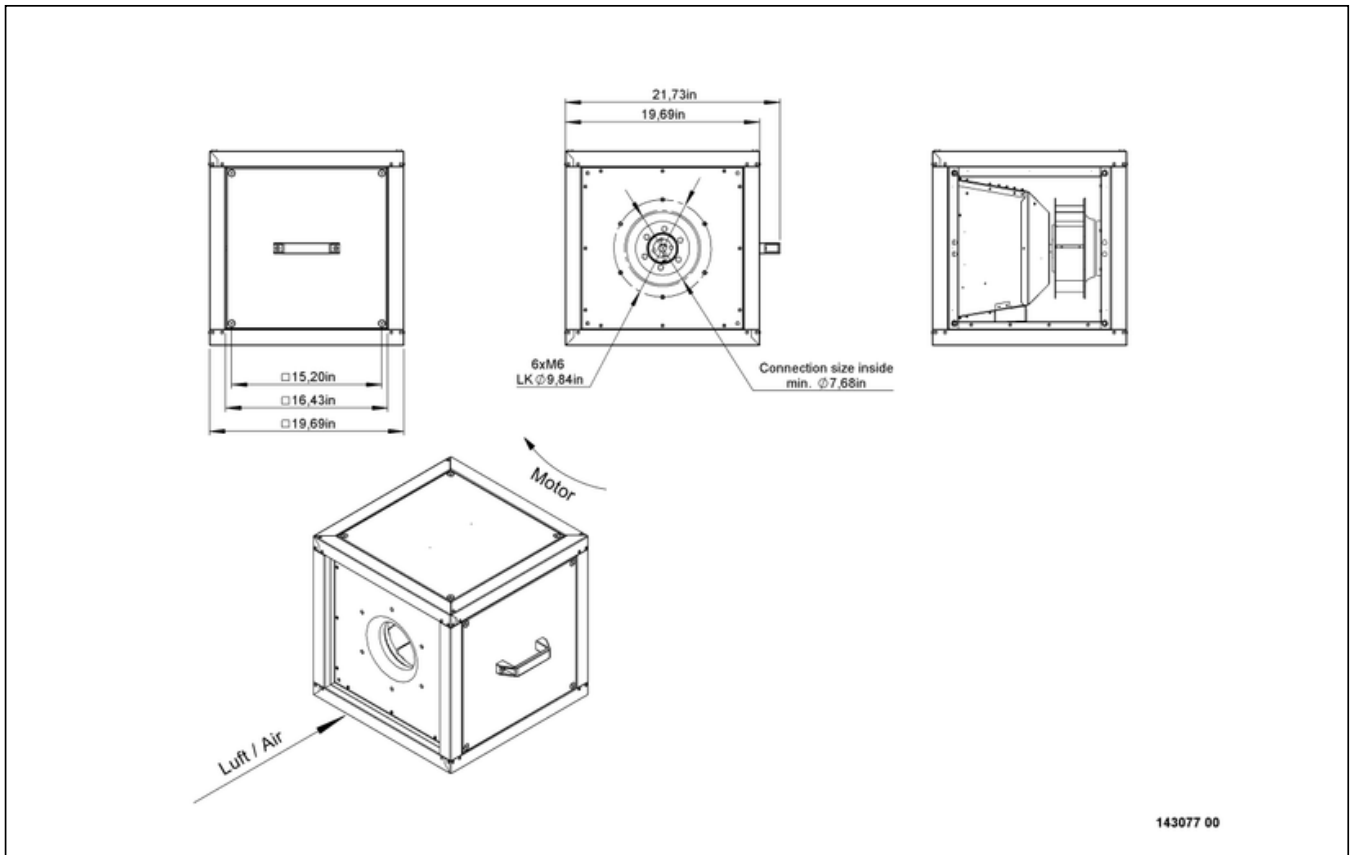
143077



zur Produktseite

MPC 225 EC T30

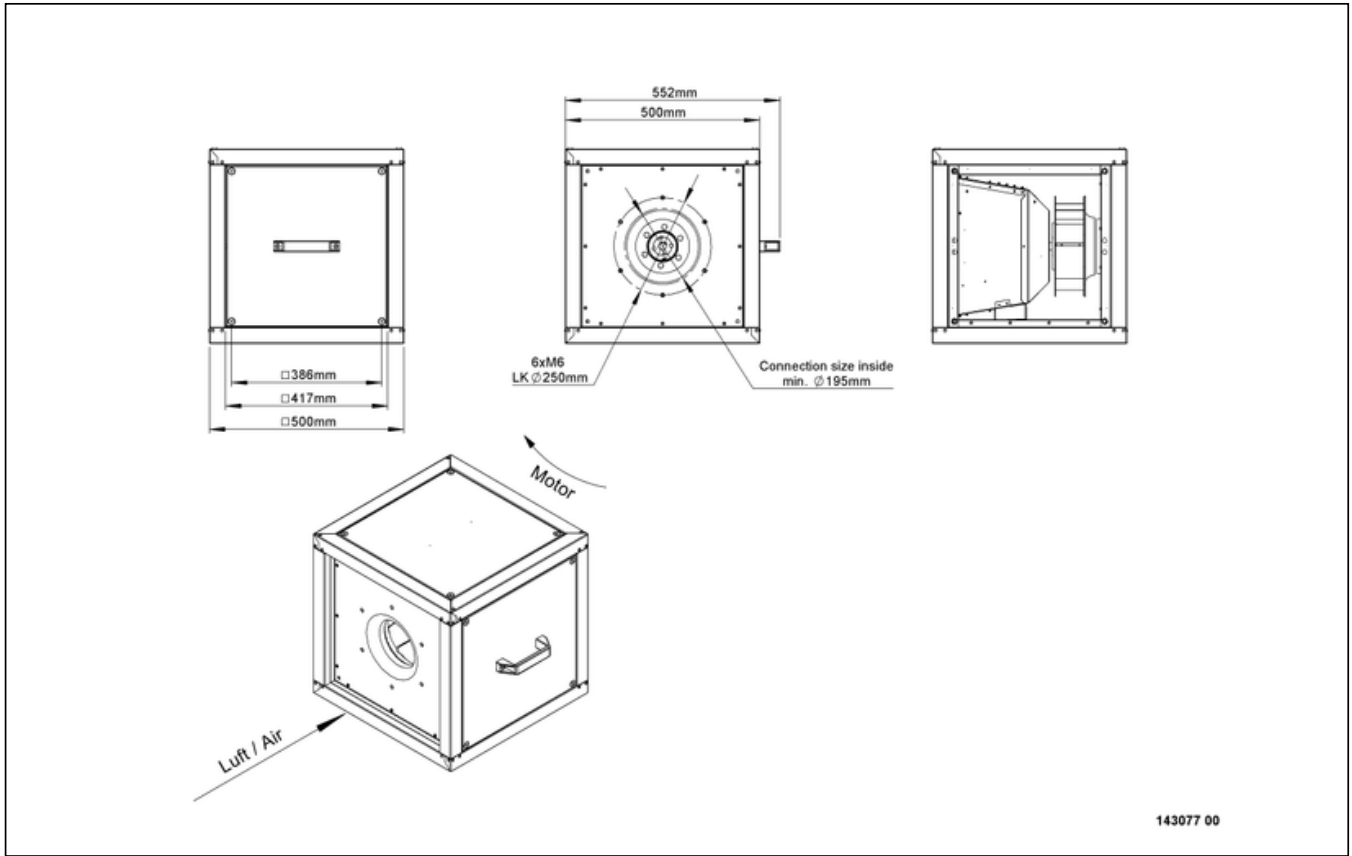
143077



zur Produktseite

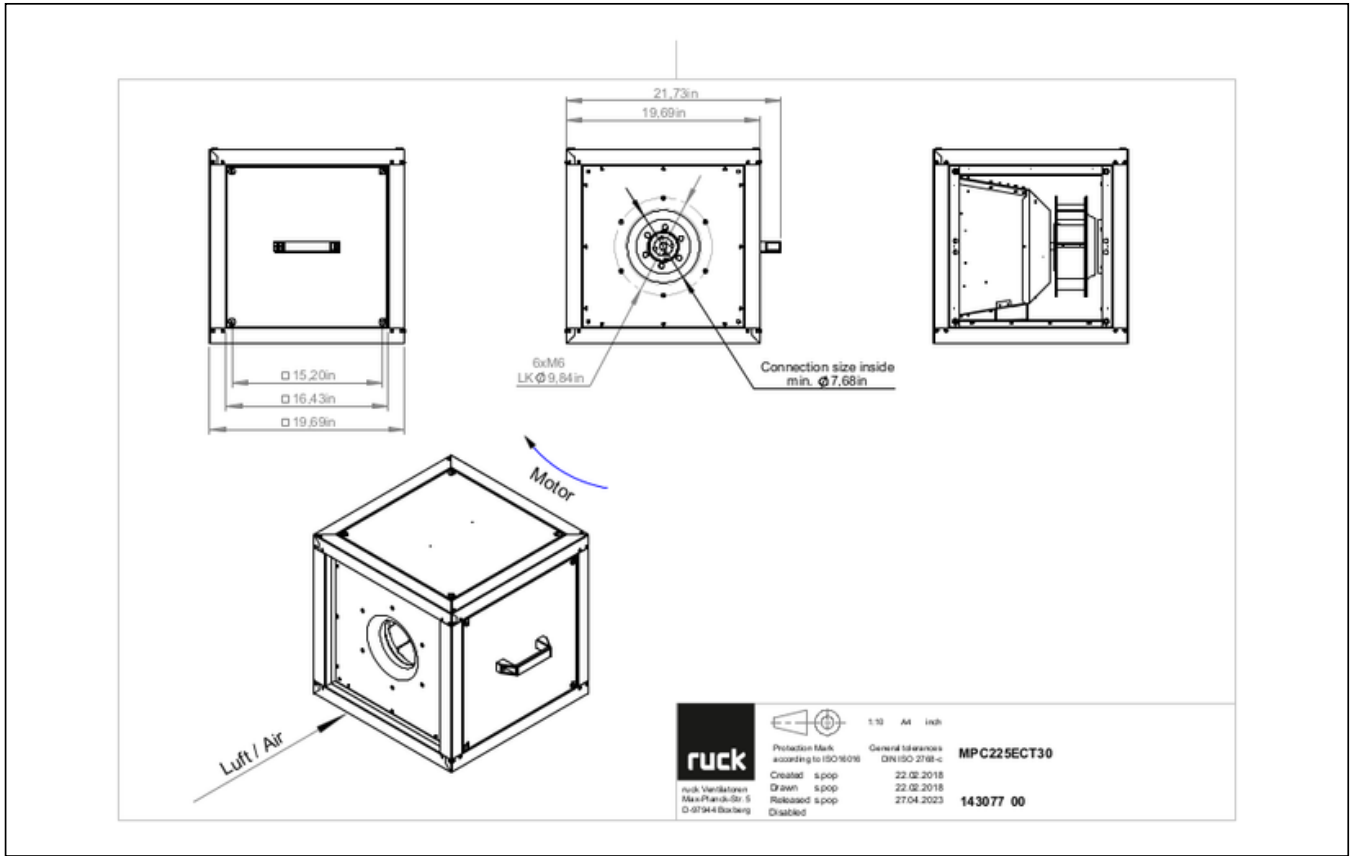
MPC 225 EC T30

143077



MPC 225 EC T30

143077



zur Produktseite

MPC 225 EC T30

143077

MECHANICAL ACCESSORIES

FB 500 | 160864



- Air filter box for panel filter
- For MPC box 500
- For 1 or 2 filter (not included)
- Housing made of galvanized sheet steel

USM 500 315 | 107181



- Transition spigot
- Galvanized steel sheet
- Insulated

USM 500 355 | 107182



- Transition spigot
- Galvanized steel sheet
- Insulated

MB MPC 01 | 116411



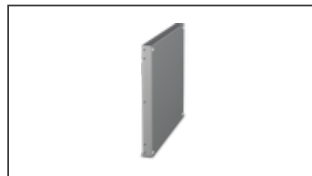
- Motor protection shield
- Sendzimir galvanized sheet

GR MPC 01 | 123430



- Base frame für MPC
- Galvanized steel sheet

UCP 500 | 142567



- Closed panel
- Galvanized steel sheet

UQR 500 315 01 | 136201



- Transition duct/tube
- Galvanized steel sheet
- Incl. 4 cylinder cap screws (M8 x 16 mm), 4 serrated lock washers for nominal size M8

UQR 500 250 01 | 136232



- Transition duct/tube
- Galvanized steel sheet
- Incl. 4 cylinder cap screws (M8 x 16 mm), 4 serrated lock washers for nominal size M8

VM 250 | 102651



- Fast clamps for sound decoupling and sealing
- Galvanized steel sheet, 5 mm
- Neopren gasket
- 1 Pack = 2 pieces

VM 355 | 102653



- Fast clamps for sound decoupling and sealing
- Galvanized steel sheet, 5 mm
- Neopren gasket
- 1 Pack = 2 pieces

AS MPC 250 | 140836



- Inlet spigot
- Galvanized steel sheet

AS MPC 315 | 140844



- Inlet spigot
- Galvanized steel sheet

AS MPC 355 | 140956



- Inlet spigot
- Galvanized steel sheet

WSH MPC 01 | 123431



- Weather protection hood
- Galvanized steel sheet

WSG MPC 500 | 140741



- Weather protection grille
- Galvanized steel sheet

RD MPC 500 | 140073



- Rain cover for outdoor installation
- Galvanized steel sheet

VM 315 | 102652



zur Produktseite

MPC 225 EC T30

143077



- Fast clamps for sound decoupling and sealing
- Galvanized steel sheet, 5 mm
- Neopren gasket
- 1 Pack = 2 pieces

ELECTRICAL ACCESSORIES

GS 03 | 107633



- Device switch
- $U_{max} = 400\text{ V}$, $I_{max} = 25\text{ A}$
- Switching capacity $400\text{ V } 3\text{-} = 5,5\text{ kW}$
- Protection class IP 55

MTP 20 | 128146



- Potentiometer 10 k Ω
- Switching contact 1A/250V AC - 2,5A/12V DC
- Max. ambient temperature 50 °C
- VDE

MTP 30 | 143289



- Stepped potentiometer 10 k Ω
- Step 1 + 2 settable 10 % - 100 % Vdc
- Step 3 100 % Vdc
- Supply voltage +10 Vdc

MTP 40 | 147359



- Potentiometer 10 k Ω
- Connection in terminal box
- Max. ambient temperature 50 °C
- PU: 20 pieces

SEN AIR | 148641



- Airflow and temperature transducer
- Measuring range temperature 0...+50 °C
- With adjustable switching threshold (air speed)
- Measuring range air velocity up to 20 m/s

CON P1000 | 115259



- Constant pressure control
- Actual value display possible via optional control unit
- Output 0-10 V DC + FC enable + setpoint reached
- Pressure setting by means of decade switch

MTP 50 | 153133



- Potentiometer with multifunction output
- 230 VAC $\pm 10\%$ / 50-60 Hz
- Selectable output: 1-10 VDC / 2-20 mA / 10-100 % PWM
- Min. and max. output value adjustable



zur Produktseite