

**Description RD EC**

Horizontal outlet EC roof fan with efficiency-optimised aluminium casing and newly developed high-performance centrifugal impeller.

**Description VD EC**

Vertical outlet EC roof fan with efficiency-optimised aluminium casing and newly developed high-performance centrifugal impeller.

**Common features RD EC and VD EC**

**Casing**  
 Made of sea water-resistant aluminium with integrated tamper protection. Motor support plate and base plate with inlet nozzle made of galvanised steel. Base plate with threaded screws for attachment of inlet-side accessories (hole pattern according to DIN 24155).

**Impeller**  
 High-performance centrifugal impeller with backward curved blades made of plastic. Dynamically balanced according to DIN ISO 21940-11 – quality grade 6.3.

**Drive**  
 Energy-saving, speed-controllable EC external rotor motor with the highest level of efficiency. Maintenance-free and radio interference-free, ball bearing mounted.

**Motor protection**  
 Integrated electronic temperature monitoring system for EC motor and electronics.

**Electrical connection**  
 ND 180 – 250 to external terminal box in protection category IP65.

**Protection grille**  
 On outlet side as standard according to DIN EN ISO 13857.

**Power control**  
 Continuously variable speed control via internal (delivery) or external potentiometer or continuously variable speed control with universal control system.

**Delivery**

Units are ready-for-connection, fully pre-assembled in the shipping box /wooden crate.

**Noise**

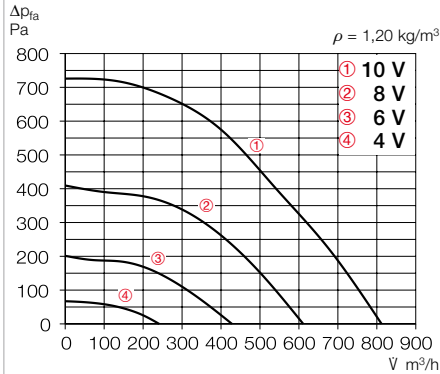
The total level and range are specified above the performance diagram for:

- Inlet side sound power
  - Outlet side sound power.
- The case-radiated noise as sound pressure at 4 m (free field conditions) is also specified in the type table and the table below the performance curve.

References	Page
Planning information	14 ff.
Technical description	499 f.
Selection table	501 f.
Accessories, details	558 f.
Universal control systems, electronic controllers, speed potentiometer	613 ff.

## Performance curves RDW EC 180

Frequency	Hz	Tot.	125	250	500	1k	2k	4k	8k
L <sub>WA</sub> Inlet side		dB(A) 72	54	60	64	66	67	64	58
L <sub>WA</sub> Outlet side		dB(A) 75	56	64	66	69	70	67	62

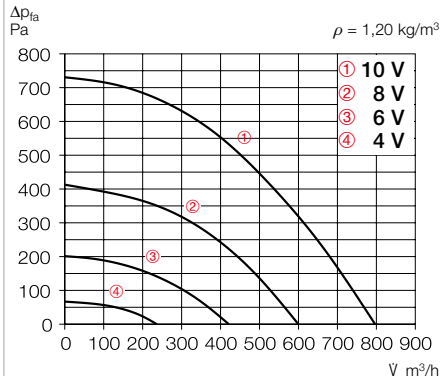


Free blowing						
Voltage V	n min <sup>-1</sup>	V m <sup>3</sup> /h	P W	I A	Lp dB(A)	SFP kW/m <sup>3</sup> /s
10	3962	812	138	1.19	60	0.61
8	2967	611	63	0.55	53	0.37
6	2077	428	25	0.22	43	0.21
4	1199	241	7	0.08	30	0.11

Type	Ref. no.	Speed	Flow rate Free blowing	Noise sound pressure	Power con- sumption	Current consump.		Wiring diagram	Max. air flow temp.		Wgt net	Speed potentiometer			
						at rated voltage	with control		at rated voltage	with control		Flush-mounted		Surf.-mounted	
		min <sup>-1</sup>	m <sup>3</sup> /h	dB(A) in 4 m	W	A	A	No.	°C	°C	kg	Type	Ref. no.	Type	Ref. no.
<b>Single phase alternating current, 1~, 230 V, 50 Hz, EC motor, protection category IP44</b>															
<b>RDW EC 180</b>	07125	3820	810	58	150	1.24	1.24	1149	50	–	4.9	<b>PU 10</b>	01734	<b>PA 10</b>	01735

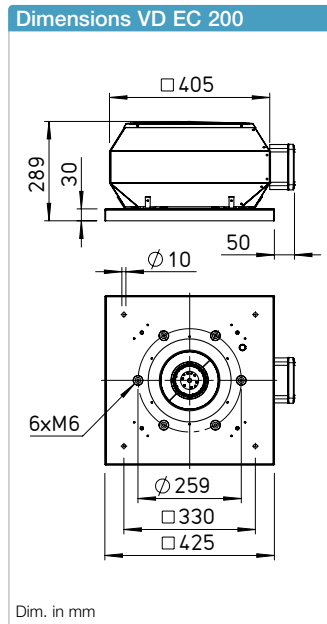
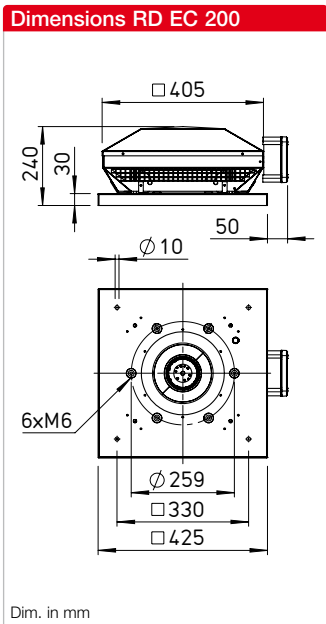
## Performance curves VDW EC 180

Frequency	Hz	Tot.	125	250	500	1k	2k	4k	8k
L <sub>WA</sub> Inlet side		dB(A) 70	52	58	62	64	65	62	56
L <sub>WA</sub> Outlet side		dB(A) 73	54	62	64	67	68	65	60

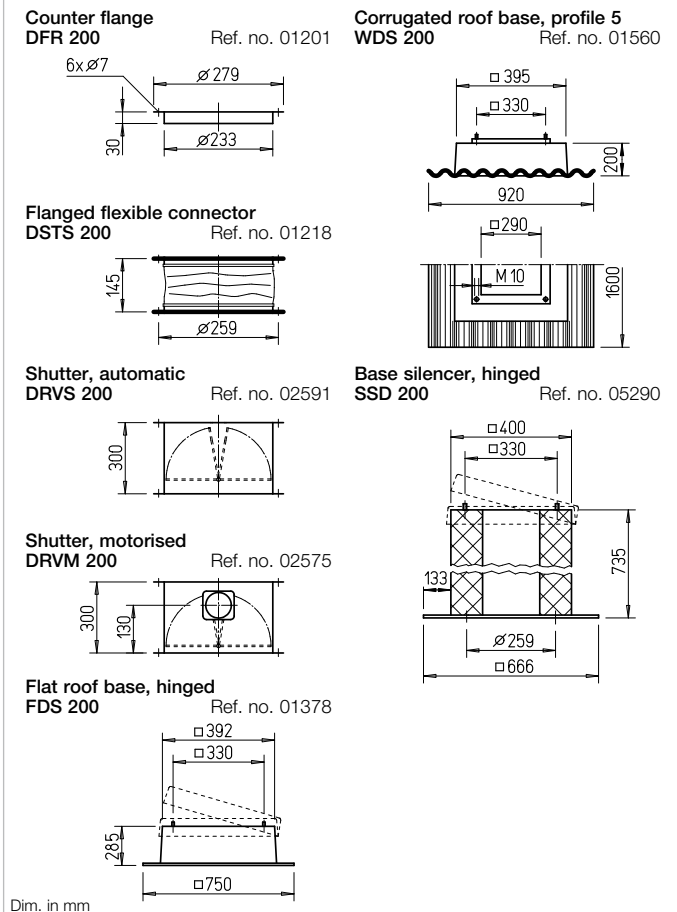


Free blowing						
Voltage V	n min <sup>-1</sup>	V m <sup>3</sup> /h	P W	I A	Lp dB(A)	SFP kW/m <sup>3</sup> /s
10	3952	797	139	1.17	58	0.62
8	2967	600	62	0.55	51	0.37
6	2077	421	24	0.22	41	0.21
4	1195	236	7	0.08	28	0.11

Type	Ref. no.	Speed	Flow rate Free blowing	Noise sound pressure	Power con- sumption	Current consump.		Wiring diagram	Max. air flow temp.		Wgt net	Speed potentiometer			
						at rated voltage	with control		at rated voltage	with control		Flush-mounted		Surf.-mounted	
		min <sup>-1</sup>	m <sup>3</sup> /h	dB(A) in 4 m	W	A	A	No.	°C	°C	kg	Type	Ref. no.	Type	Ref. no.
<b>Single phase alternating current, 1~, 230 V, 50 Hz, EC motor, protection category IP44</b>															
<b>VDW EC 180</b>	07123	3870	795	56	150	1.24	1.24	1149	50	–	5.2	<b>PU 10</b>	01734	<b>PA 10</b>	01735



**Dimensions Accessories for RD EC 200 / VD EC 200**



**Description RD EC**

Horizontal outlet EC roof fan with efficiency-optimised aluminium casing and newly developed high-performance centrifugal impeller.

**Description VD EC**

Vertical outlet EC roof fan with efficiency-optimised aluminium casing and newly developed high-performance centrifugal impeller.

**Common features RD EC and VD EC**

- **Casing**  
Made of sea water-resistant aluminium with integrated tamper protection. Motor support plate and base plate with inlet nozzle made of galvanised steel. Base plate with threaded screws for attachment of inlet-side accessories (hole pattern according to DIN 24155).

- **Impeller**  
High-performance centrifugal impeller with backward curved blades made of plastic. Dynamically balanced according to DIN ISO 21940-11 – quality grade 6.3.

- **Drive**  
Energy-saving, speed-controllable EC external rotor motor with the highest level of efficiency. Maintenance-free and radio interference-free, ball bearing mounted.

- **Motor protection**  
Integrated electronic temperature monitoring system for EC motor and electronics.

- **Electrical connection**  
ND 180 – 250 to external terminal box in protection category IP65.

- **Protection grille**  
On outlet side as standard according to DIN EN ISO 13857.

- **Power control**  
Continuously variable speed control via internal (delivery) or external potentiometer or continuously variable speed control with universal control system.

■ **Delivery**

Units are ready-for-connection, fully pre-assembled in the shipping box /wooden crate.

■ **Noise**

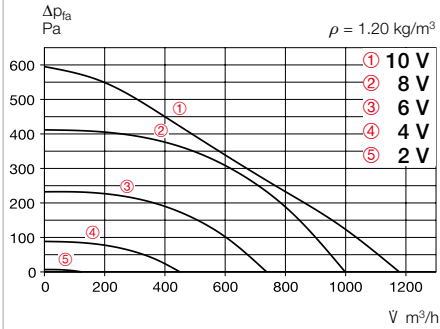
The total level and range are specified above the performance diagram for:

- Inlet side sound power
  - Outlet side sound power.
- The case-radiated noise as sound pressure at 4 m (free field conditions) is also specified in the type table and the table below the performance curve.

References	Page
Planning information	14 ff.
Technical description	499 f.
Selection table	501 f.
Accessories, details	558 f.
Universal control systems, electronic controllers, speed potentiometer	613 ff.

## Performance curves RDW EC 200

Frequency	Hz	Tot.	125	250	500	1k	2k	4k	8k
L <sub>wa</sub> Inlet side	dB(A)	71	43	64	65	65	63	61	57
L <sub>wa</sub> Outlet side	dB(A)	74	45	67	67	68	66	65	61

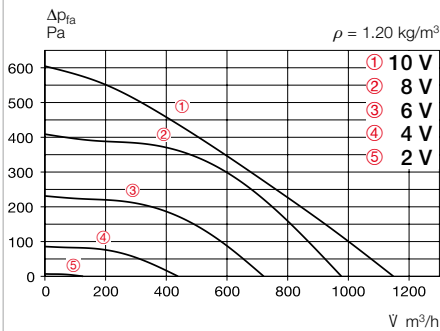


Free blowing						
Voltage V	n min <sup>-1</sup>	V m <sup>3</sup> /h	P W	I A	Lp dB(A)	SFP kW/m <sup>3</sup> /s
10	3000	1180	125	0.90	57	0.38
8	2545	1000	75	0.60	54	0.27
6	1925	740	35	0.27	48	0.17
4	1185	450	10	0.10	39	0.08

Type	Ref. no.	Speed	Flow rate Free blowing	Noise sound pressure	Power con- sumption	Current consump.		Wiring diagram	Max. air flow temp.		Wgt net	Speed potentiometer			
						at rated voltage	with control		at rated voltage	with control		Flush-mounted	Surf.-mounted		
		min <sup>-1</sup>	m <sup>3</sup> /h	dB(A) in 4 m	W	A	A	No.	°C	°C	kg	Type	Ref. no.	Type	Ref. no.
<b>Single phase alternating current, 1~, 230 V, 50 Hz, EC motor, protection category IP44</b>															
<b>RDW EC 200</b>	07195	2650	1180	56.5	129	0.93	0.93	1149	50	–	6.8	<b>PU 10</b>	01734	<b>PA 10</b>	01735

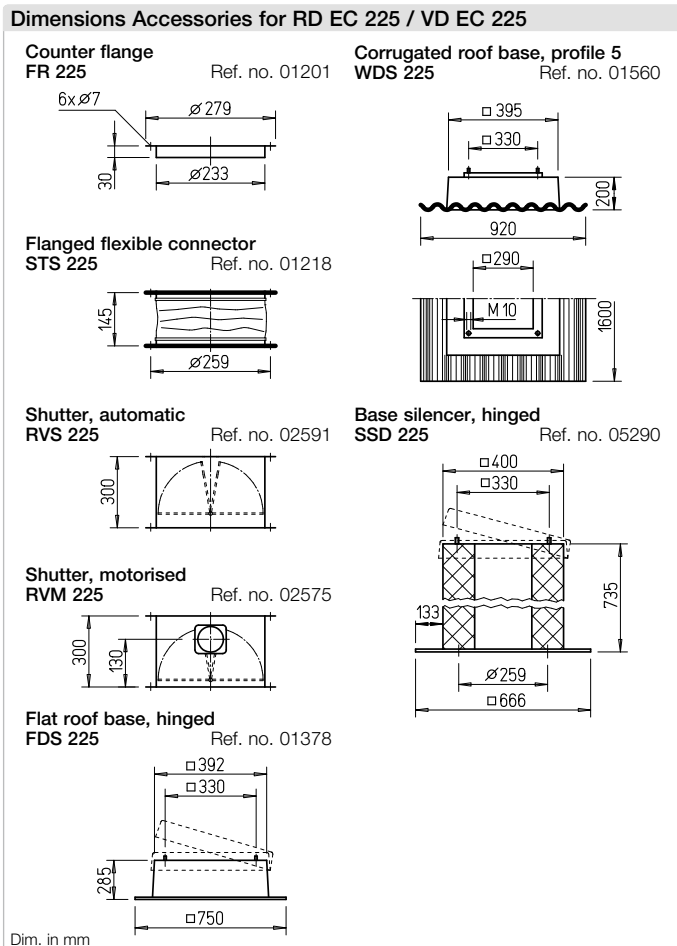
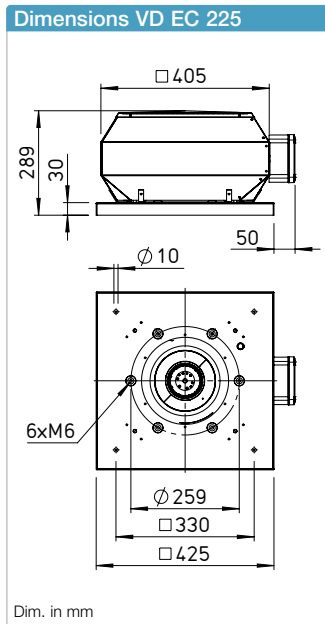
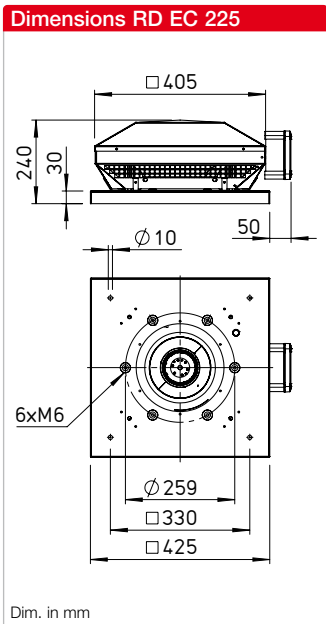
## Performance curves VDW EC 200

Frequency	Hz	Tot.	125	250	500	1k	2k	4k	8k
L <sub>wa</sub> Inlet side	dB(A)	69	52	58	64	63	61	61	52
L <sub>wa</sub> Outlet side	dB(A)	72	56	65	67	64	64	63	55



Free blowing						
Voltage V	n min <sup>-1</sup>	V m <sup>3</sup> /h	P W	I A	Lp dB(A)	SFP kW/m <sup>3</sup> /s
10	2960	1150	130	0.90	55	0.41
8	2520	975	80	0.60	52	0.30
6	1900	720	35	0.25	46	0.18
4	1170	440	10	0.09	36	0.08

Type	Ref. no.	Speed	Flow rate Free blowing	Noise sound pressure	Power con- sumption	Current consump.		Wiring diagram	Max. air flow temp.		Wgt net	Speed potentiometer			
						at rated voltage	with control		at rated voltage	with control		Flush-mounted	Surf.-mounted		
		min <sup>-1</sup>	m <sup>3</sup> /h	dB(A) in 4 m	W	A	A	No.	°C	°C	kg	Type	Ref. no.	Type	Ref. no.
<b>Single phase alternating current, 1~, 230 V, 50 Hz, EC motor, protection category IP44</b>															
<b>VDW EC 200</b>	07192	2670	1150	55	129	0.94	0.94	1149	50	–	7.4	<b>PU 10</b>	01734	<b>PA 10</b>	01735



**Description RD EC**

Horizontal outlet EC roof fan with efficiency-optimised aluminium casing and newly developed high-performance centrifugal impeller.

**Description VD EC**

Vertical outlet EC roof fan with efficiency-optimised aluminium casing and newly developed high-performance centrifugal impeller.

**Common features RD EC and VD EC**

- **Casing**  
 Made of sea water-resistant aluminium with integrated tamper protection. Motor support plate and base plate with inlet nozzle made of galvanised steel. Base plate with threaded screws for attachment of inlet-side accessories (hole pattern according to DIN 24155).

- **Impeller**  
 High-performance centrifugal impeller with backward curved blades made of plastic. Dynamically balanced according to DIN ISO 21940-11 – quality grade 6.3.

- **Drive**  
 Energy-saving, speed-controllable EC external rotor motor with the highest level of efficiency. Maintenance-free and radio interference-free, ball bearing mounted.

- **Motor protection**  
 Integrated electronic temperature monitoring system for EC motor and electronics.

- **Electrical connection**  
 ND 180 – 250 to external terminal box in protection category IP65.

- **Protection grille**  
 On outlet side as standard according to DIN EN ISO 13857.

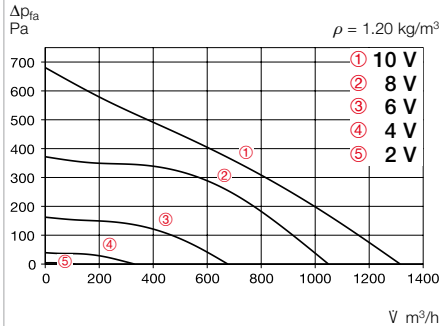
- **Power control**  
 Continuously variable speed control via internal (delivery) or external potentiometer or continuously variable speed control with universal control system.

- **Delivery**  
 Units are ready-for-connection, fully pre-assembled in the shipping box /wooden crate.
- **Noise**  
 The total level and range are specified above the performance diagram for:  
 Inlet side sound power  
 Outlet side sound power.  
 The case-radiated noise as sound pressure at 4 m (free field conditions) is also specified in the type table and the table below the performance curve.

References	Page
Planning information	14 ff.
Technical description	499 f.
Selection table	501 f.
Accessories, details	558 f.
Universal control systems, electronic controllers, speed potentiometer	613 ff.

### Performance curves RDW EC 225 A

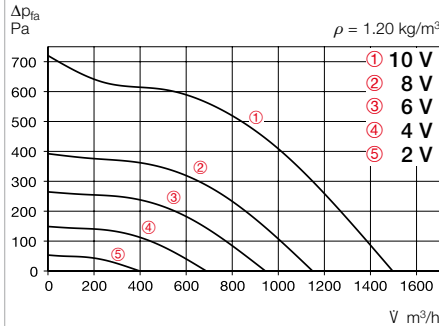
Frequency	Hz	Tot.	125	250	500	1k	2k	4k	8k
L <sub>WA</sub> Inlet side		dB(A)	67	50	56	61	62	59	59
L <sub>WA</sub> Outlet side		dB(A)	69	49	60	66	62	58	48



Free blowing						
Voltage V	n min <sup>-1</sup>	V m <sup>3</sup> /h	P W	I A	Lp dB(A)	SFP kW/m <sup>3</sup> /s
10	2700	1300	145	1.05	52	0.40
8	2160	1050	75	0.55	48	0.26
6	1430	680	25	0.20	39	0.13
4	720	330	5	0.05	28	0.05

### Performance curves RDW EC 225 B

Frequency	Hz	Tot.	125	250	500	1k	2k	4k	8k
L <sub>WA</sub> Inlet side		dB(A)	75	49	66	69	68	67	64
L <sub>WA</sub> Outlet side		dB(A)	77	55	69	70	70	69	66

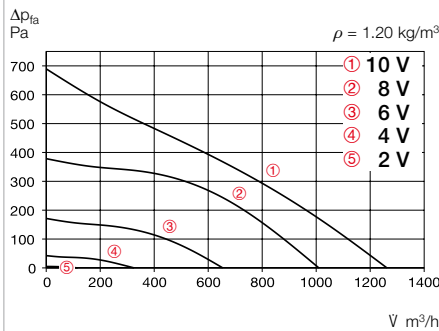


Free blowing						
Voltage V	n min <sup>-1</sup>	V m <sup>3</sup> /h	P W	I A	Lp dB(A)	SFP kW/m <sup>3</sup> /s
10	3020	1500	205	0.90	52	0.49
8	2350	1150	105	0.45	55	0.33
6	1940	945	65	0.30	51	0.25
4	1450	690	35	0.20	45	0.18

Type	Ref. no.	Speed	Flow rate Free blowing	Noise sound pressure	Power consumption	Current consump.		Wiring diagram	Max. air flow temp.		Wgt net	Speed potentiometer			
						at rated voltage	with control		at rated voltage	with control		Flush-mounted	Surf.-mounted		
		min <sup>-1</sup>	m <sup>3</sup> /h	dB(A) in 4 m	W	A	A	No.	°C	°C	kg	Type	Ref. no.	Type	Ref. no.
<b>Single phase alternating current, 1~, 230 V, 50 Hz, EC motor, protection category IP44</b>															
<b>RDW EC 225 A</b>	07262	2550	1310	52	163	1.14	1.14	1149	50	—	6.7	<b>PU 10</b>	01734	<b>PA 10</b>	01735
<b>Single phase alternating current, 1~, 230 V, 50 Hz, EC motor, protection category IP54</b>															
<b>RDW EC 225 B</b>	07243	3020	1500	60	246	1.06	1.06	1149	50	—	8	<b>PU 10</b>	01734	<b>PA 10</b>	01735

### Performance curves VDW EC 225 A

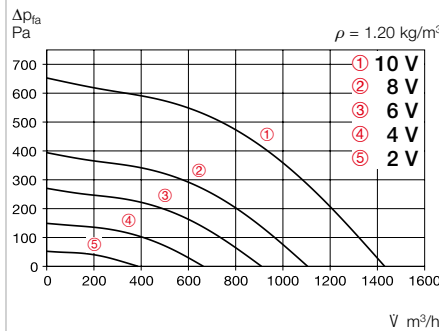
Frequency	Hz	Tot.	125	250	500	1k	2k	4k	8k
L <sub>WA</sub> Inlet side		dB(A)	68	43	59	61	62	61	60
L <sub>WA</sub> Outlet side		dB(A)	70	46	61	62	64	64	57



Free blowing						
Voltage V	n min <sup>-1</sup>	V m <sup>3</sup> /h	P W	I A	Lp dB(A)	SFP kW/m <sup>3</sup> /s
10	2690	1260	150	1.05	53	0.43
8	2160	1000	75	0.60	49	0.27
6	1430	650	25	0.20	40	0.14
4	720	330	5	0.05	27	0.05

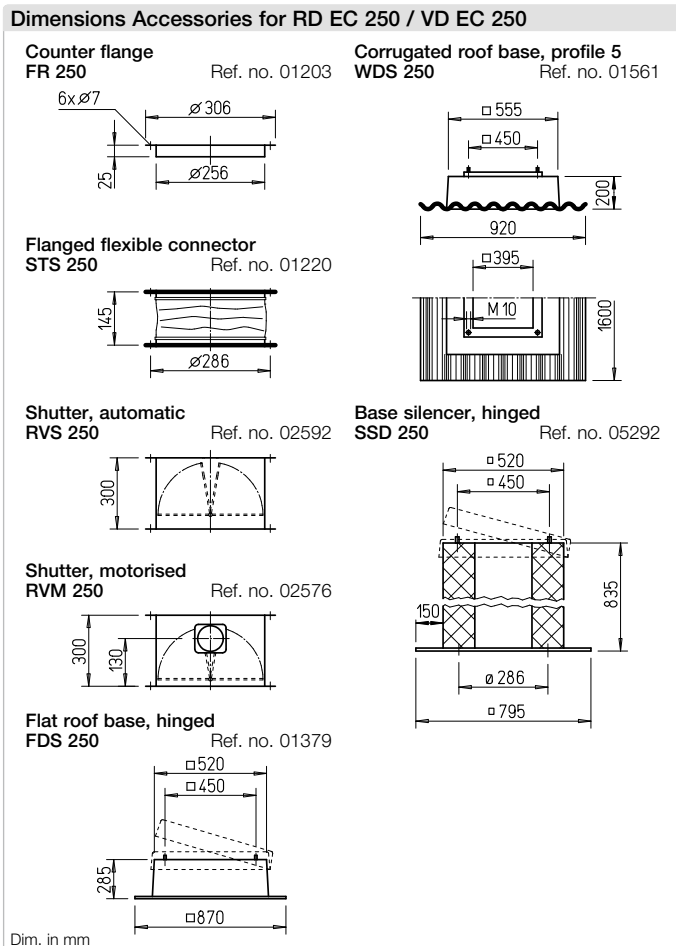
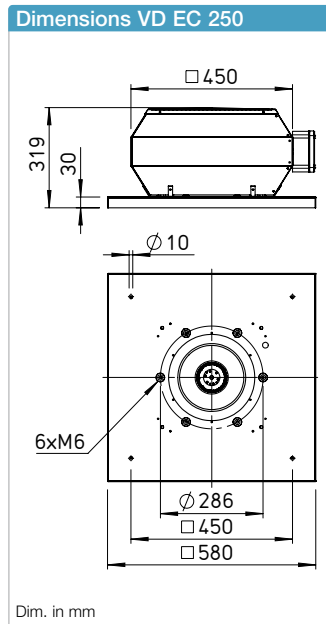
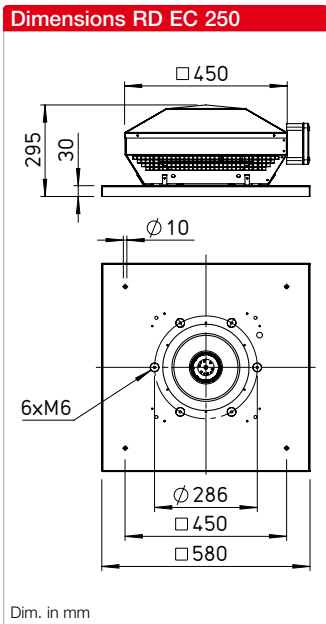
### Performance curves VDW EC 225 B

Frequency	Hz	Tot.	125	250	500	1k	2k	4k	8k
L <sub>WA</sub> Inlet side		dB(A)	74	47	65	68	67	67	62
L <sub>WA</sub> Outlet side		dB(A)	75	50	66	68	69	68	63



Free blowing						
Voltage V	n min <sup>-1</sup>	V m <sup>3</sup> /h	P W	I A	Lp dB(A)	SFP kW/m <sup>3</sup> /s
10	3020	1430	205	0.9	58	0.52
8	2350	1100	105	0.5	53	0.34
6	1950	910	65	0.3	49	0.26
4	1450	670	35	0.2	43	0.19

Type	Ref. no.	Speed	Flow rate Free blowing	Noise sound pressure	Power consumption	Current consump.		Wiring diagram	Max. air flow temp.		Wgt net	Speed potentiometer			
						at rated voltage	with control		at rated voltage	with control		Flush-mounted	Surf.-mounted		
		min <sup>-1</sup>	m <sup>3</sup> /h	dB(A) in 4 m	W	A	A	No.	°C	°C	kg	Type	Ref. no.	Type	Ref. no.
<b>Single phase alternating current, 1~, 230 V, 50 Hz, EC motor, protection category IP44</b>															
<b>VDW EC 225 A</b>	07241	2500	1260	53	161	1.14	1.14	1149	50	—	7.3	<b>PU 10</b>	01734	<b>PA 10</b>	01735
<b>Single phase alternating current, 1~, 230 V, 50 Hz, EC motor, protection category IP54</b>															
<b>VDW EC 225 B</b>	07240	3015	1430	58	244	1.06	1.06	1149	50	—	8.5	<b>PU 10</b>	01734	<b>PA 10</b>	01735



**Description RD EC**

Horizontal outlet EC roof fan with efficiency-optimised aluminium casing and newly developed high-performance centrifugal impeller.

**Description VD EC**

Vertical outlet EC roof fan with efficiency-optimised aluminium casing and newly developed high-performance centrifugal impeller.

**Common features RD EC and VD EC**

**Casing**  
 Made of sea water-resistant aluminium with integrated tamper protection. Motor support plate and base plate with inlet nozzle made of galvanised steel. Base plate with threaded screws for attachment of inlet-side accessories (hole pattern according to DIN 24155).

**Impeller**  
 High-performance centrifugal impeller with backward curved blades made of plastic. Dynamically balanced according to DIN ISO 21940-11 – quality grade 6.3.

**Drive**  
 Energy-saving, speed-controllable EC external rotor motor with the highest level of efficiency. Maintenance-free and radio interference-free, ball bearing mounted.

**Motor protection**  
 Integrated electronic temperature monitoring system for EC motor and electronics.

**Electrical connection**  
 ND 180 – 250 to external terminal box in protection category IP65.

**Protection grille**  
 On outlet side as standard according to DIN EN ISO 13857.

**Power control**  
 Continuously variable speed control via internal (delivery) or external potentiometer or continuously variable speed control with universal control system.

**Delivery**

Units are ready-for-connection, fully pre-assembled in the shipping box /wooden crate.

**Noise**

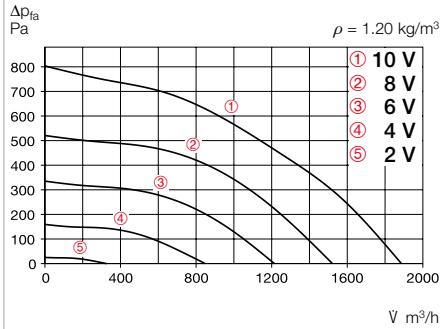
The total level and range are specified above the performance diagram for:

- Inlet side sound power
  - Outlet side sound power.
- The case-radiated noise as sound pressure at 4 m (free field conditions) is also specified in the type table and the table below the performance curve.

References	Page
Planning information	14 ff.
Technical description	499 f.
Selection table	501 f.
Accessories, details	558 f.
Universal control systems, electronic controllers, speed potentiometer	613 ff.

## Performance curves RDW EC 250

Frequency	Hz	Tot.	125	250	500	1k	2k	4k	8k
L <sub>WA</sub> Inlet side	dB(A)	76	50	67	70	69	68	68	65
L <sub>WA</sub> Outlet side	dB(A)	78	56	70	71	71	71	70	67

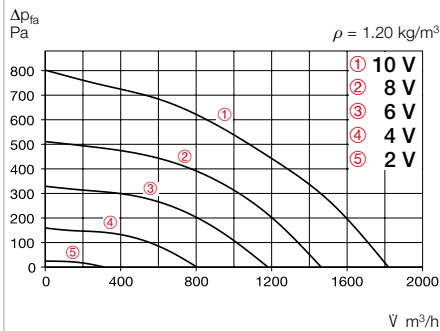


Free blowing						
Voltage V	n min <sup>-1</sup>	V m <sup>3</sup> /h	P W	I A	Lp dB(A)	SFP kW/m <sup>2</sup> /s
10	2870	1895	230	1.00	61	0.44
8	2300	1520	125	0.55	57	0.30
6	1840	1215	70	0.32	52	0.21
4	1290	860	30	0.15	45	0.13

Type	Ref. no.	Speed	Flow rate Free blowing	Noise sound pressure	Power con- sumption	Current consump.		Wiring diagram	Max. air flow temp.		Wgt net	Speed potentiometer			
						at rated voltage	with control		at rated voltage	with control		Flush-mounted	Surf.-mounted		
		min <sup>-1</sup>	m <sup>3</sup> /h	dB(A) in 4 m	W	A	A	No.	°C	°C	kg	Type	Ref. no.	Type	Ref. no.
<b>Single phase alternating current, 1~, 230 V, 50 Hz, EC motor, protection category IP54</b>															
<b>RDW EC 250</b>	07278	2705	1900	60.5	319	1.34	1.34	1149	50	–	11	<b>PU 10</b>	01734	<b>PA 10</b>	01735

## Performance curves VDW EC 250

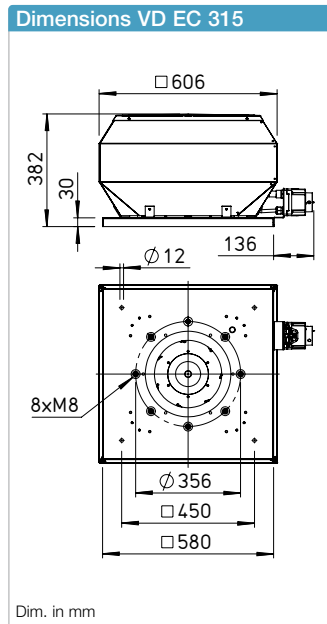
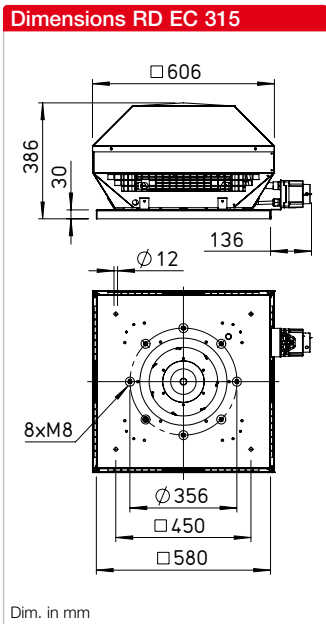
Frequency	Hz	Tot.	125	250	500	1k	2k	4k	8k
L <sub>WA</sub> Inlet side	dB(A)	75	48	66	69	68	68	67	63
L <sub>WA</sub> Outlet side	dB(A)	76	51	67	69	70	69	68	64



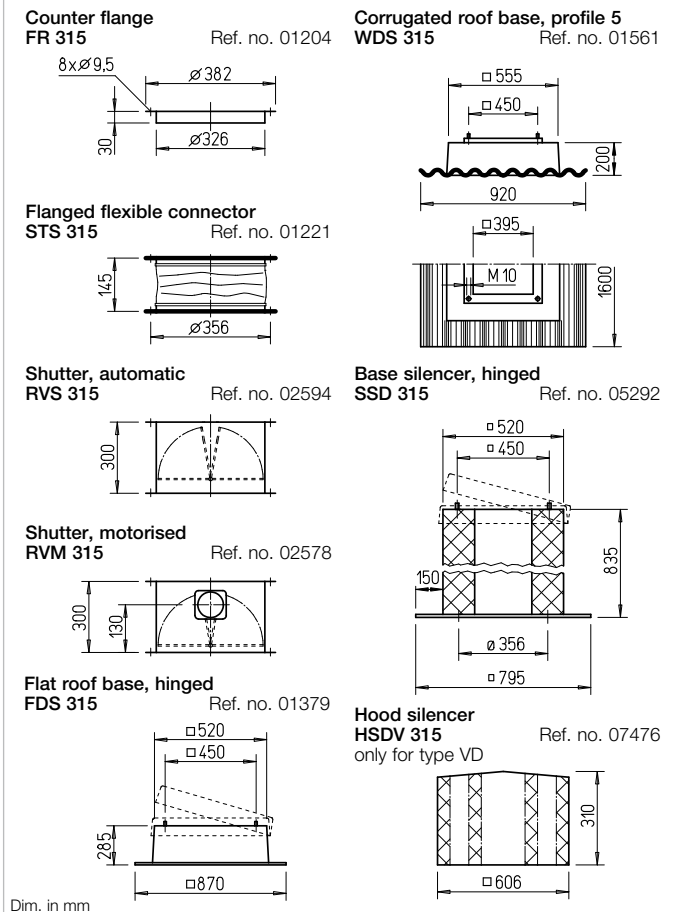
Free blowing						
Voltage V	n min <sup>-1</sup>	V m <sup>3</sup> /h	P W	I A	Lp dB(A)	SFP kW/m <sup>2</sup> /s
10	2860	1830	240	1.05	59	0.47
8	2300	1460	130	0.60	55	0.32
6	1840	1180	75	0.35	50	0.23
4	1280	810	30	0.20	43	0.13

Type	Ref. no.	Speed	Flow rate Free blowing	Noise sound pressure	Power con- sumption	Current consump.		Wiring diagram	Max. air flow temp.		Wgt net	Speed potentiometer			
						at rated voltage	with control		at rated voltage	with control		Flush-mounted	Surf.-mounted		
		min <sup>-1</sup>	m <sup>3</sup> /h	dB(A) in 4 m	W	A	A	No.	°C	°C	kg	Type	Ref. no.	Type	Ref. no.
<b>Single phase alternating current, 1~, 230 V, 50 Hz, EC motor, protection category IP54</b>															
<b>VDW EC 250</b>	07276	2740	1825	59	321	1.36	1.36	1149	50	–	11.5	<b>PU 10</b>	01734	<b>PA 10</b>	01735





**Dimensions Accessories for RD EC 315 / VD EC 315**



**Description RD EC**

Horizontal outlet EC roof fan with efficiency-optimised aluminium casing and newly developed high-performance centrifugal impeller.

**Description VD EC**

Vertical outlet EC roof fan with efficiency-optimised aluminium casing and newly developed high-performance centrifugal impeller.

**Common features RD EC and VD EC**

- **Casing**  
Made of sea water-resistant aluminium with integrated tamper protection. Motor support plate and base plate with inlet nozzle made of galvanised steel. Base plate with threaded screws for attachment of inlet-side accessories (hole pattern according to DIN 24155).

- **Impeller**  
High-performance centrifugal impeller with backward curved blades made of plastic. Dynamically balanced according to DIN ISO 21940-11 – quality grade 6.3.

- **Drive**  
Energy-saving, speed-controllable EC external rotor motor with the highest level of efficiency. Maintenance-free and radio interference-free, ball bearing mounted.

- **Motor protection**  
Integrated electronic temperature monitoring system for EC motor and electronics.

- **Electrical connection**  
ND 315 – 630 to external terminal box and isolator in protection category IP65.

- **Protection grille**  
On outlet side as standard according to DIN EN ISO 13857.

- **Power control**  
Continuously variable speed control via internal (delivery) or external potentiometer or continuously variable speed control with universal control system.

■ **Delivery**

Units are ready-for-connection, fully pre-assembled in the shipping box /wooden crate.

■ **Noise**

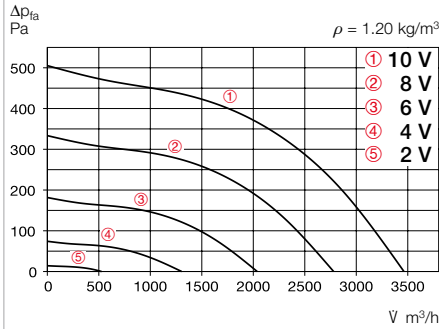
The total level and range are specified above the performance diagram for:

- Inlet side sound power
  - Outlet side sound power.
- The case-radiated noise as sound pressure at 4 m (free field conditions) is also specified in the type table and the table below the performance curve.

References	Page
Planning information	14 ff.
Technical description	499 f.
Selection table	501 f.
Accessories, details	558 f.
Universal control systems, electronic controllers, speed potentiometer	613 ff.

### Performance curves RDW EC 315

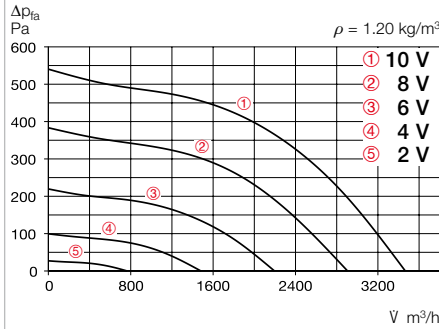
Frequency	Hz	Tot.	125	250	500	1k	2k	4k	8k	
L <sub>WA</sub> Inlet side		dB(A)	70	58	62	64	62	63	62	51
L <sub>WA</sub> Outlet side		dB(A)	72	59	66	67	66	62	54	50



Free blowing						
Voltage V	n min <sup>-1</sup>	V m <sup>3</sup> /h	P W	I A	Lp dB(A)	SFP kW/m <sup>3</sup> /s
10	1641	3463	316	1.8	55	0.33
8	1325	2779	169	1.0	50	0.22
6	973	2039	72	0.5	44	0.13
4	621	1309	25	0.2	34	0.07

### Performance curves RDD EC 315

Frequency	Hz	Tot.	125	250	500	1k	2k	4k	8k	
L <sub>WA</sub> Inlet side		dB(A)	70	57	61	63	61	62	61	50
L <sub>WA</sub> Outlet side		dB(A)	72	59	65	66	65	61	53	50

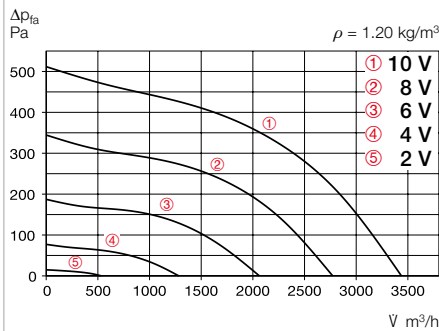


Free blowing						
Voltage V	n min <sup>-1</sup>	V m <sup>3</sup> /h	P W	I A	Lp dB(A)	SFP kW/m <sup>3</sup> /s
10	1700	3460	380	0.65	55	0.40
8	1430	2900	240	0.45	51	0.30
6	1040	2100	110	0.25	44	0.19
4	670	1350	45	0.15	35	0.12

Type	Ref. no.	Speed	Flow rate Free blowing	Noise sound pressure	Power consumption	Current consump.		Wiring diagram	Max. air flow temp.		Wgt net	Speed potentiometer			
						at rated voltage	with control		at rated voltage	with control		Flush-mounted	Surf.-mounted		
		min <sup>-1</sup>	m <sup>3</sup> /h	dB(A) in 4 m	W	A	A	No.	°C	°C	kg	Type	Ref. no.	Type	Ref. no.
<b>Single phase alternating current, 1~, 230 V, 50 Hz, EC motor, protection category IP54</b>															
<b>RDW EC 315</b>	07306	1650	3465	55	450	2	2	1149	40	—	18	<b>PU 24</b>	01736	<b>PA 24</b>	01737
<b>Three phase current, 3~, 400 V, 50 Hz, EC motor, protection category IP54</b>															
<b>RDD EC 315</b>	07314	1700	3484	54.5	460	1.0	0.9	1148	60	—	21.3	<b>PU 24</b>	01736	<b>PA 24</b>	01737

### Performance curves VDW EC 315

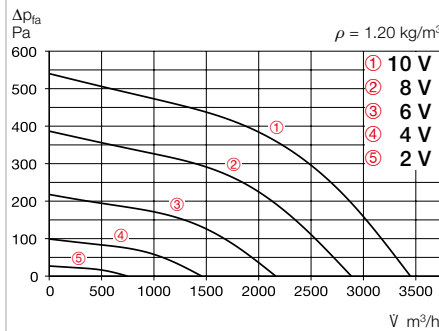
Frequency	Hz	Tot.	125	250	500	1k	2k	4k	8k	
L <sub>WA</sub> Inlet side		dB(A)	72	61	66	66	65	64	59	53
L <sub>WA</sub> Outlet side		dB(A)	77	67	68	68	72	67	60	53



Free blowing						
Voltage V	n min <sup>-1</sup>	V m <sup>3</sup> /h	P W	I A	Lp dB(A)	SFP kW/m <sup>3</sup> /s
10	1645	3441	316	1.80	55	0.33
8	1329	2783	176	1.04	50	0.23
6	990	2060	76	0.48	44	0.13
4	612	1276	23	0.19	35	0.07

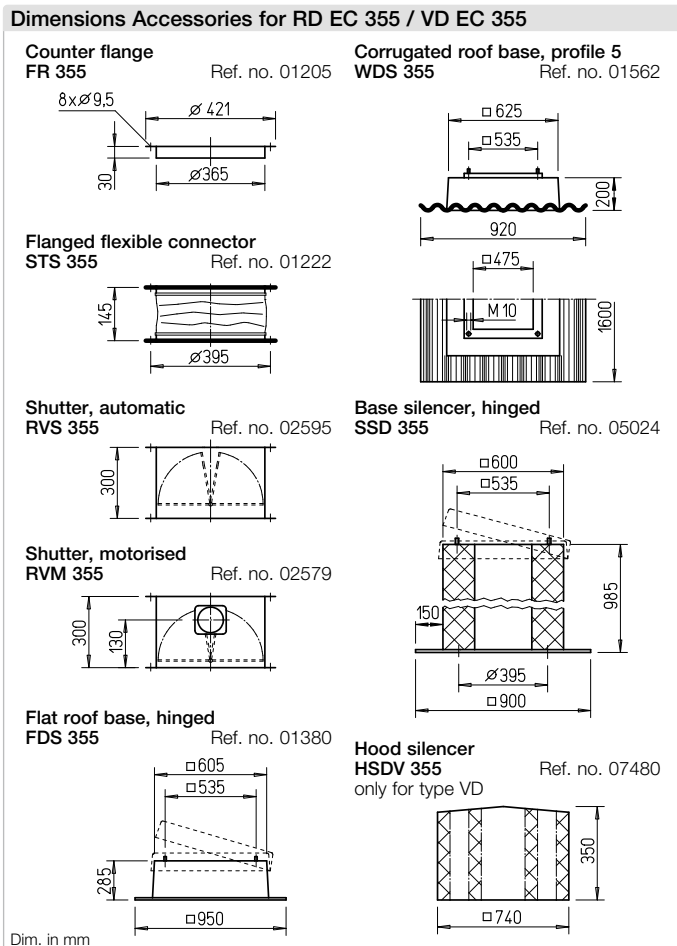
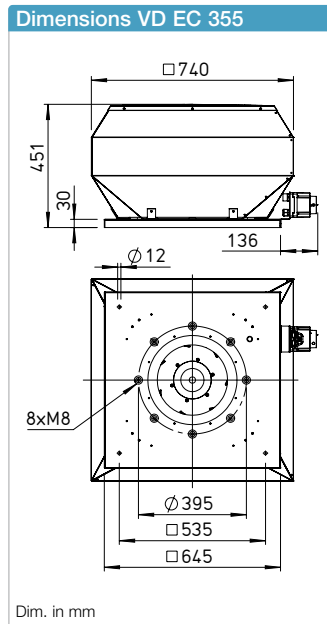
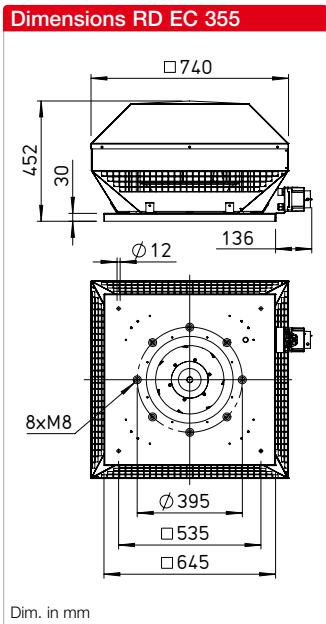
### Performance curves VDD EC 315

Frequency	Hz	Tot.	125	250	500	1k	2k	4k	8k	
L <sub>WA</sub> Inlet side		dB(A)	75	64	69	69	68	67	62	56
L <sub>WA</sub> Outlet side		dB(A)	80	70	71	71	75	70	63	56



Free blowing						
Voltage V	n min <sup>-1</sup>	V m <sup>3</sup> /h	P W	I A	Lp dB(A)	SFP kW/m <sup>3</sup> /s
10	1700	3420	370	0.69	55	0.39
8	1430	2890	240	0.50	51	0.30
6	1040	2090	110	0.25	44	0.19
4	655	1320	45	0.15	35	0.12

Type	Ref. no.	Speed	Flow rate Free blowing	Noise sound pressure	Power consumption	Current consump.		Wiring diagram	Max. air flow temp.		Wgt net	Speed potentiometer			
						at rated voltage	with control		at rated voltage	with control		Flush-mounted	Surf.-mounted		
		min <sup>-1</sup>	m <sup>3</sup> /h	dB(A) in 4 m	W	A	A	No.	°C	°C	kg	Type	Ref. no.	Type	Ref. no.
<b>Single phase alternating current, 1~, 230 V, 50 Hz, EC motor, protection category IP54</b>															
<b>VDW EC 315</b>	07304	1650	3440	55	450	2	2	1149	40	—	17.2	<b>PU 24</b>	01736	<b>PA 24</b>	01737
<b>Three phase current, 3~, 400 V, 50 Hz, EC motor, protection category IP54</b>															
<b>VDD EC 315</b>	07312	1700	3453	54.5	460	1.0	0.9	1148	60	—	21.5	<b>PU 24</b>	01736	<b>PA 24</b>	01737



**Description RD EC**

Horizontal outlet EC roof fan with efficiency-optimised aluminium casing and newly developed high-performance centrifugal impeller.

**Description VD EC**

Vertical outlet EC roof fan with efficiency-optimised aluminium casing and newly developed high-performance centrifugal impeller.

**Common features RD EC and VD EC**

- **Casing**  
 Made of sea water-resistant aluminium with integrated tamper protection. Motor support plate and base plate with inlet nozzle made of galvanised steel. Base plate with threaded screws for attachment of inlet-side accessories (hole pattern according to DIN 24155).

- **Impeller**  
 High-performance centrifugal impeller with backward curved blades made of plastic. Dynamically balanced according to DIN ISO 21940-11 – quality grade 6.3.

- **Drive**  
 Energy-saving, speed-controllable EC external rotor motor with the highest level of efficiency. Maintenance-free and radio interference-free, ball bearing mounted.

- **Motor protection**  
 Integrated electronic temperature monitoring system for EC motor and electronics.

- **Electrical connection**  
 ND 315 – 630 to external terminal box and isolator in protection category IP65.

- **Protection grille**  
 On outlet side as standard according to DIN EN ISO 13857.

- **Power control**  
 Continuously variable speed control via internal (delivery) or external potentiometer or continuously variable speed control with universal control system.

■ **Delivery**

Units are ready-for-connection, fully pre-assembled in the shipping box /wooden crate.

■ **Noise**

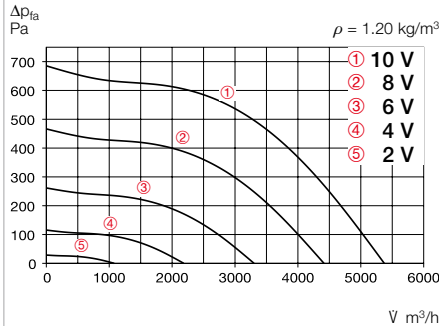
The total level and range are specified above the performance diagram for:

- Inlet side sound power
  - Outlet side sound power.
- The case-radiated noise as sound pressure at 4 m (free field conditions) is also specified in the type table and the table below the performance curve.

References	Page
Planning information	14 ff.
Technical description	499 f.
Selection table	501 f.
Accessories, details	558 f.
Universal control systems, electronic controllers, speed potentiometer	613 ff.

### Performance curves RDW EC 355

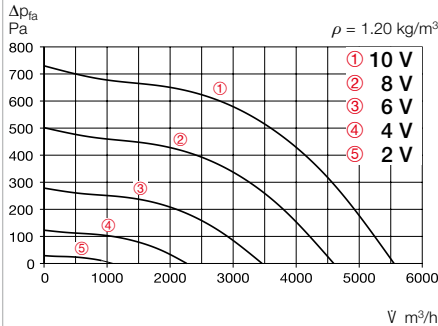
Frequency	Hz	Tot.	125	250	500	1k	2k	4k	8k
L <sub>WA</sub> Inlet side	dB(A)	70	60	65	64	62	60	57	52
L <sub>WA</sub> Outlet side	dB(A)	76	67	70	70	70	66	57	51



Free blowing						
Voltage V	n min <sup>-1</sup>	V m <sup>3</sup> /h	P W	I A	Lp dB(A)	SFP kW/m <sup>3</sup> /s
10	1700	5400	580	2.50	59	0.39
8	1400	4420	330	1.50	55	0.27
6	1050	3320	150	0.75	49	0.16
4	670	2170	60	0.45	40	0.10

### Performance curves RDD EC 355

Frequency	Hz	Tot.	125	250	500	1k	2k	4k	8k
L <sub>WA</sub> Inlet side	dB(A)	72	62	67	66	64	62	59	54
L <sub>WA</sub> Outlet side	dB(A)	77	68	71	71	71	67	58	52

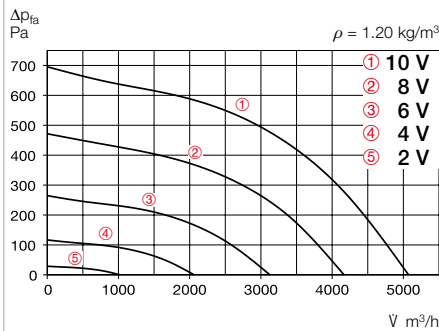


Free blowing						
Voltage V	n min <sup>-1</sup>	V m <sup>3</sup> /h	P W	I A	Lp dB(A)	SFP kW/m <sup>3</sup> /s
10	1750	5340	670	1.20	60	0.45
8	1450	4420	410	0.75	56	0.33
6	1060	3200	175	0.35	50	0.20
4	670	2000	60	0.15	41	0.11

Type	Ref. no.	Speed	Flow rate Free blowing	Noise sound pressure	Power consumption	Current consump.		Wiring diagram	Max. air flow temp.		Wgt net	Speed potentiometer			
						at rated voltage	with control		at rated voltage	with control		Flush-mounted	Surf.-mounted		
		min <sup>-1</sup>	m <sup>3</sup> /h	dB(A) in 4 m	W	A	A	No.	°C	°C	kg	Type	Ref. no.	Type	Ref. no.
<b>Single phase alternating current, 1~, 230 V, 50 Hz, EC motor, protection category IP55</b>															
<b>RDW EC 355</b>	07333	1700	5400	58.5	810	3.47	3.47	1147	50	—	26.5	<b>PU 24</b>	01736	<b>PA 24</b>	01737
<b>Three phase current, 3~, 400 V, 50 Hz, EC motor, protection category IP55</b>															
<b>RDD EC 355</b>	07335	1750	5558	59.5	870	1.6	1.49	1148	60	—	28.5	<b>PU 24</b>	01736	<b>PA 24</b>	01737

### Performance curves VDW EC 355

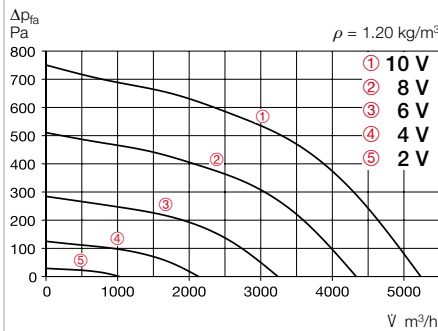
Frequency	Hz	Tot.	125	250	500	1k	2k	4k	8k
L <sub>WA</sub> Inlet side	dB(A)	70	60	65	64	62	60	57	52
L <sub>WA</sub> Outlet side	dB(A)	75	65	69	69	69	66	57	53



Free blowing						
Voltage V	n min <sup>-1</sup>	V m <sup>3</sup> /h	P W	I A	Lp dB(A)	SFP kW/m <sup>3</sup> /s
10	1700	5080	590	2.50	58	0.42
8	1400	4180	335	1.50	54	0.29
6	1050	3130	155	0.80	48	0.18
4	700	2070	60	0.50	40	0.10

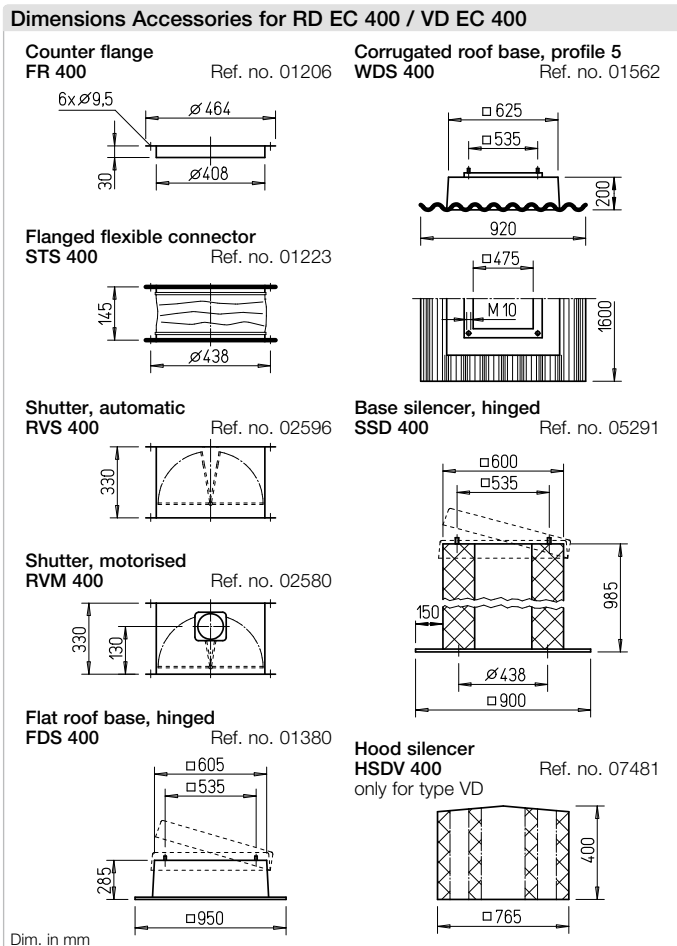
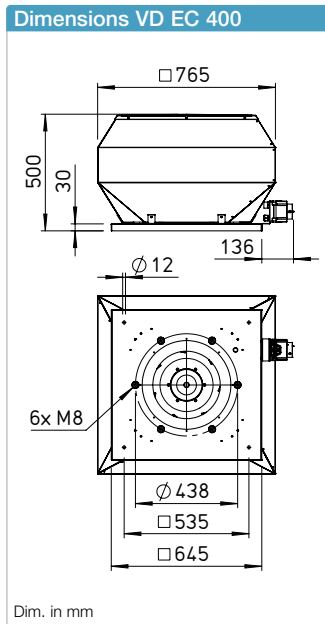
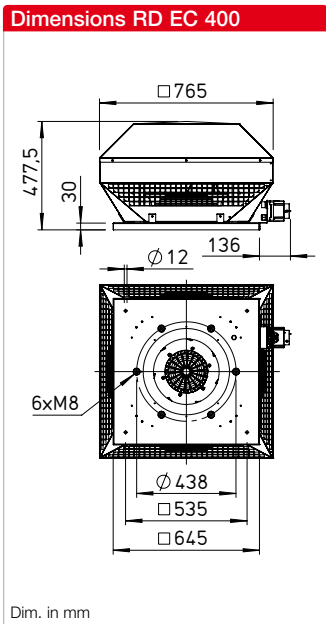
### Performance curves VDD EC 355

Frequency	Hz	Tot.	125	250	500	1k	2k	4k	8k
L <sub>WA</sub> Inlet side	dB(A)	71	61	66	65	63	61	58	53
L <sub>WA</sub> Outlet side	dB(A)	76	67	70	70	70	66	58	52



Free blowing						
Voltage V	n min <sup>-1</sup>	V m <sup>3</sup> /h	P W	I A	Lp dB(A)	SFP kW/m <sup>3</sup> /s
10	1750	5030	650	1.20	59	0.47
8	1460	4180	390	0.75	55	0.34
6	1070	3040	170	0.35	49	0.20
4	667	1900	60	0.15	39	0.11

Type	Ref. no.	Speed	Flow rate Free blowing	Noise sound pressure	Power consumption	Current consump.		Wiring diagram	Max. air flow temp.		Wgt net	Speed potentiometer			
						at rated voltage	with control		at rated voltage	with control		Flush-mounted	Surf.-mounted		
		min <sup>-1</sup>	m <sup>3</sup> /h	dB(A) in 4 m	W	A	A	No.	°C	°C	kg	Type	Ref. no.	Type	Ref. no.
<b>Single phase alternating current, 1~, 230 V, 50 Hz, EC motor, protection category IP55</b>															
<b>VDW EC 355</b>	07331	1700	5080	58	800	3.45	3.45	1147	50	—	27	<b>PU 24</b>	01736	<b>PA 24</b>	01737
<b>Three phase current, 3~, 400 V, 50 Hz, EC motor, protection category IP55</b>															
<b>VDD EC 355</b>	07334	1700	3425	59	835	1.45	1.45	1148	60	—	29	<b>PU 24</b>	01736	<b>PA 24</b>	01737



**Description RD EC**

Horizontal outlet EC roof fan with efficiency-optimised aluminium casing and newly developed high-performance centrifugal impeller.

**Description VD EC**

Vertical outlet EC roof fan with efficiency-optimised aluminium casing and newly developed high-performance centrifugal impeller.

**Common features RD EC and VD EC**

- **Casing**  
 Made of sea water-resistant aluminium with integrated tamper protection. Motor support plate and base plate with inlet nozzle made of galvanised steel. Base plate with threaded screws for attachment of inlet-side accessories (hole pattern according to DIN 24155).

- **Impeller**  
 High-performance centrifugal impeller with backward curved blades made of plastic. Dynamically balanced according to DIN ISO 21940-11 – quality grade 6.3.

- **Drive**  
 Energy-saving, speed-controllable EC external rotor motor with the highest level of efficiency. Maintenance-free and radio interference-free, ball bearing mounted.

- **Motor protection**  
 Integrated electronic temperature monitoring system for EC motor and electronics.

- **Electrical connection**  
 ND 315 – 630 to external terminal box and isolator in protection category IP65.

- **Protection grille**  
 On outlet side as standard according to DIN EN ISO 13857.

- **Power control**  
 Continuously variable speed control via internal (delivery) or external potentiometer or continuously variable speed control with universal control system.

■ **Delivery**

Units are ready-for-connection, fully pre-assembled in the shipping box /wooden crate.

■ **Noise**

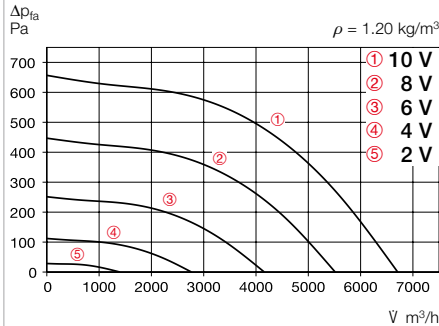
The total level and range are specified above the performance diagram for:

- Inlet side sound power
  - Outlet side sound power.
- The case-radiated noise as sound pressure at 4 m (free field conditions) is also specified in the type table and the table below the performance curve.

References	Page
Planning information	14 ff.
Technical description	499 f.
Selection table	501 f.
Accessories, details	558 f.
Universal control systems, electronic controllers, speed potentiometer	613 ff.

### Performance curves RDW EC 400

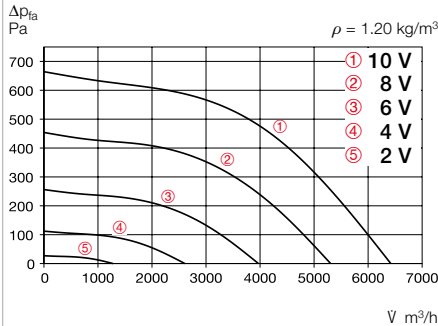
Frequency	Hz	Tot.	125	250	500	1k	2k	4k	8k	
L <sub>WA</sub> Inlet side		dB(A)	72	62	66	67	64	63	57	53
L <sub>WA</sub> Outlet side		dB(A)	77	68	71	71	67	60	53	



Free blowing						
Voltage V	n min <sup>-1</sup>	V m <sup>3</sup> /h	P W	I A	Lp dB(A)	SFP kW/m <sup>3</sup> /s
10	1500	6695	691	2.90	60	0.37
8	1237	5522	388	1.68	56	0.25
6	927	4168	173	0.83	50	0.15
4	617	2761	62	0.45	41	0.08

### Performance curves RDD EC 400

Frequency	Hz	Tot.	125	250	500	1k	2k	4k	8k	
L <sub>WA</sub> Inlet side		dB(A)	72	62	66	67	64	63	57	53
L <sub>WA</sub> Outlet side		dB(A)	77	68	71	71	67	60	53	

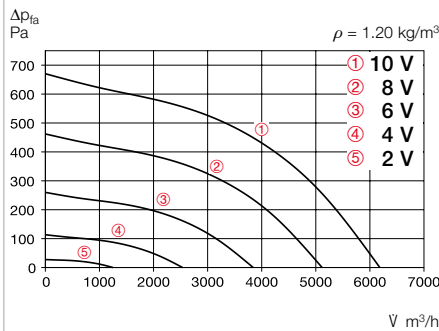


Free blowing						
Voltage V	n min <sup>-1</sup>	V m <sup>3</sup> /h	P W	I A	Lp dB(A)	SFP kW/m <sup>3</sup> /s
10	1500	6450	715	1.20	60	0.40
8	1250	5350	445	0.80	56	0.30
6	910	3910	210	0.45	50	0.19
4	580	2500	80	0.20	40	0.12

Type	Ref. no.	Speed	Flow rate Free blowing	Noise sound pressure	Power consumption	Current consump.		Wiring diagram	Max. air flow temp.		Wgt net	Speed potentiometer			
						at rated voltage	with control		at rated voltage	with control		Flush-mounted	Surf.-mounted		
		min <sup>-1</sup>	m <sup>3</sup> /h	dB(A) in 4 m	W	A	A	No.	°C	°C	kg	Type	Ref. no.	Type	Ref. no.
<b>Single phase alternating current, 1~, 230 V, 50 Hz, EC motor, protection category IP54</b>															
<b>RDW EC 400</b>	07365	1500	6695	59.5	1050	4.4	4.4	1147	40	—	28	<b>PU 24</b>	01736	<b>PA 24</b>	01737
<b>Three phase current, 3~, 400 V, 50 Hz, EC motor, protection category IP54</b>															
<b>RDD EC 400</b>	07369	1500	6421	59.5	950	1.6	1.7	1148	60	—	33	<b>PU 24</b>	01736	<b>PA 24</b>	01737

### Performance curves VDW EC 400

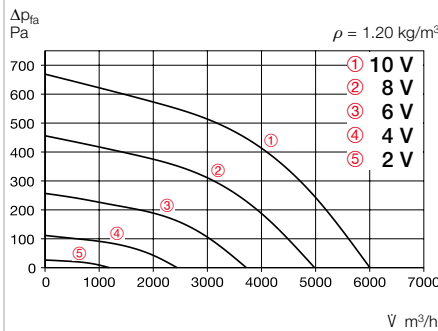
Frequency	Hz	Tot.	125	250	500	1k	2k	4k	8k	
L <sub>WA</sub> Inlet side		dB(A)	73	63	67	68	65	64	58	54
L <sub>WA</sub> Outlet side		dB(A)	77	64	72	71	67	61	55	



Free blowing						
Voltage V	n min <sup>-1</sup>	V m <sup>3</sup> /h	P W	I A	Lp dB(A)	SFP kW/m <sup>3</sup> /s
10	1499	6198	726	3.0	60	0.42
8	1246	5132	416	2.0	56	0.29
6	935	3859	187	1.0	50	0.17
4	619	2544	67	0.47	41	0.09

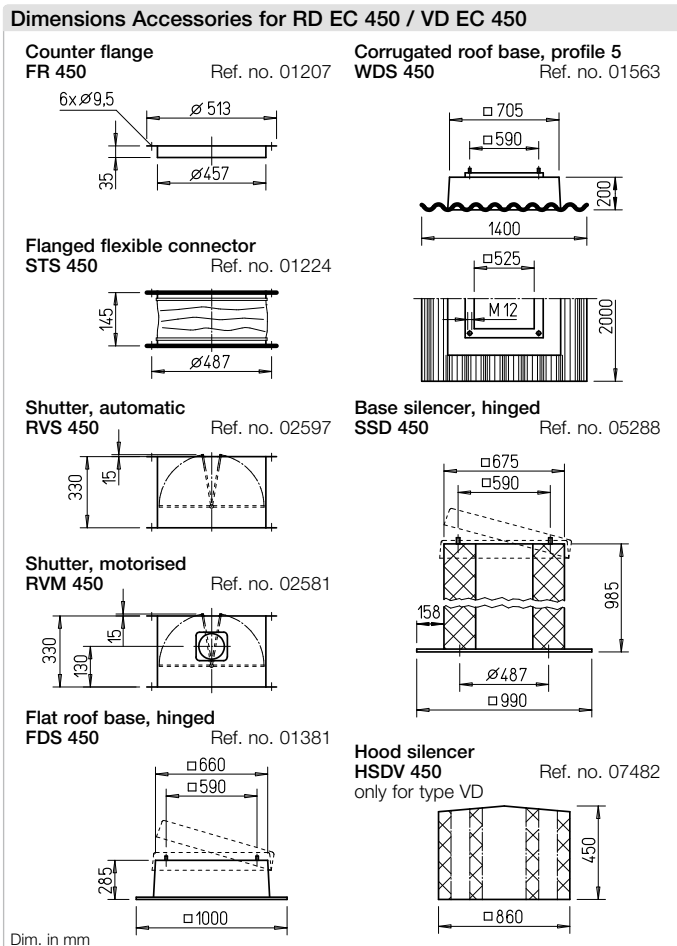
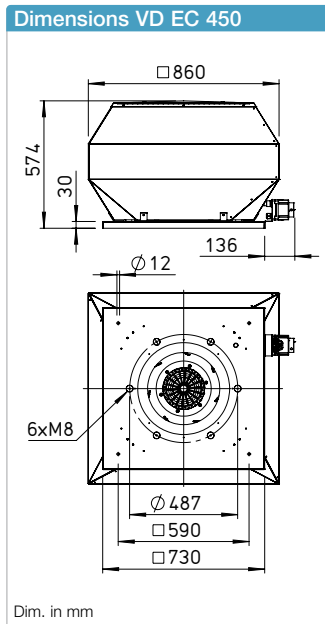
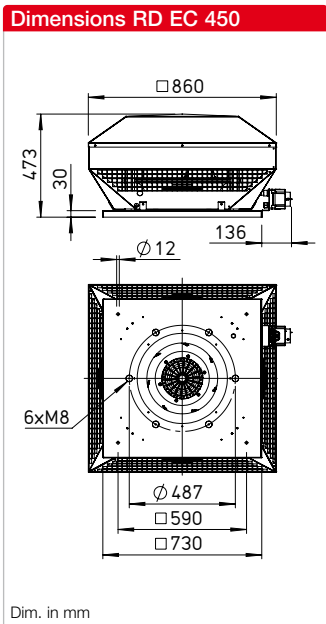
### Performance curves VDD EC 400

Frequency	Hz	Tot.	125	250	500	1k	2k	4k	8k	
L <sub>WA</sub> Inlet side		dB(A)	71	60	65	65	64	63	58	52
L <sub>WA</sub> Outlet side		dB(A)	76	66	67	67	64	66	59	52



Free blowing						
Voltage V	n min <sup>-1</sup>	V m <sup>3</sup> /h	P W	I A	Lp dB(A)	SFP kW/m <sup>3</sup> /s
10	1500	6060	755	1.25	59	0.45
8	1250	5050	465	0.85	55	0.33
6	910	3680	220	0.45	49	0.22
4	580	2350	80	0.20	39	0.12

Type	Ref. no.	Speed	Flow rate Free blowing	Noise sound pressure	Power consumption	Current consump.		Wiring diagram	Max. air flow temp.		Wgt net	Speed potentiometer			
						at rated voltage	with control		at rated voltage	with control		Flush-mounted	Surf.-mounted		
		min <sup>-1</sup>	m <sup>3</sup> /h	dB(A) in 4 m	W	A	A	No.	°C	°C	kg	Type	Ref. no.	Type	Ref. no.
<b>Single phase alternating current, 1~, 230 V, 50 Hz, EC motor, protection category IP54</b>															
<b>VDW EC 400</b>	07364	1500	6200	59.5	1000	4.2	4.2	1147	40	—	33	<b>PU 24</b>	01736	<b>PA 24</b>	01737
<b>Three phase current, 3~, 400 V, 50 Hz, EC motor, protection category IP54</b>															
<b>VDD EC 400</b>	07368	1500	6022	58.5	950	1.7	1.7	1148	60	—	33	<b>PU 24</b>	01736	<b>PA 24</b>	01737



**Description RD EC**

Horizontal outlet EC roof fan with efficiency-optimised aluminium casing and newly developed high-performance centrifugal impeller.

**Description VD EC**

Vertical outlet EC roof fan with efficiency-optimised aluminium casing and newly developed high-performance centrifugal impeller.

**Common features RD EC and VD EC**

- **Casing**  
 Made of sea water-resistant aluminium with integrated tamper protection. Motor support plate and base plate with inlet nozzle made of galvanised steel. Base plate with threaded screws for attachment of inlet-side accessories (hole pattern according to DIN 24155).

- **Impeller**  
 High-performance centrifugal impeller with backward curved blades made of plastic. Dynamically balanced according to DIN ISO 21940-11 – quality grade 6.3.

- **Drive**  
 Energy-saving, speed-controllable EC external rotor motor with the highest level of efficiency. Maintenance-free and radio interference-free, ball bearing mounted.

- **Motor protection**  
 Integrated electronic temperature monitoring system for EC motor and electronics.

- **Electrical connection**  
 ND 315 – 630 to external terminal box and isolator in protection category IP65.

- **Protection grille**  
 On outlet side as standard according to DIN EN ISO 13857.

- **Power control**  
 Continuously variable speed control via internal (delivery) or external potentiometer or continuously variable speed control with universal control system.

■ **Delivery**

Units are ready-for-connection, fully pre-assembled in the shipping box /wooden crate.

■ **Noise**

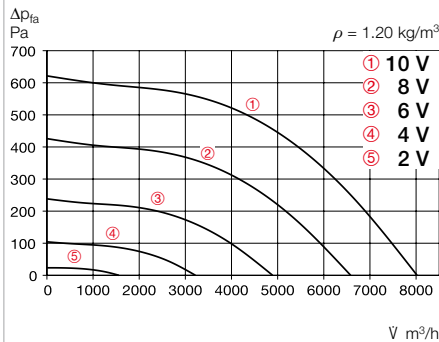
The total level and range are specified above the performance diagram for:

- Inlet side sound power
  - Outlet side sound power.
- The case-radiated noise as sound pressure at 4 m (free field conditions) is also specified in the type table and the table below the performance curve.

References	Page
Planning information	14 ff.
Technical description	499 f.
Selection table	501 f.
Accessories, details	558 f.
Universal control systems, electronic controllers, speed potentiometer	613 ff.

### Performance curves RDW EC 450

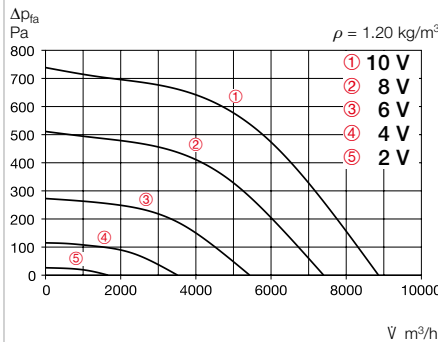
Frequency	Hz	Tot.	125	250	500	1k	2k	4k	8k	
L <sub>WA</sub> Inlet side		dB(A)	72	61	66	66	65	64	59	53
L <sub>WA</sub> Outlet side		dB(A)	77	67	68	68	72	67	60	53



Free blowing						
Voltage V	n min <sup>-1</sup>	V m <sup>3</sup> /h	P W	I A	Lp dB(A)	SFP kW/m <sup>3</sup> /s
10	1300	8042	738	3.10	60	0.33
8	1074	6595	421	1.80	56	0.23
6	802	4891	191	0.91	50	0.14
4	535	3221	70	0.51	37	0.08

### Performance curves RDD EC 450 A

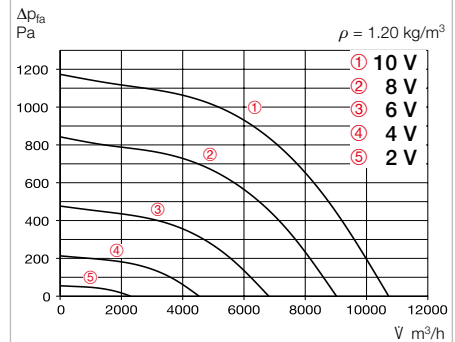
Frequency	Hz	Tot.	125	250	500	1k	2k	4k	8k	
L <sub>WA</sub> Inlet side		dB(A)	75	64	69	69	68	67	62	56
L <sub>WA</sub> Outlet side		dB(A)	80	70	71	71	75	70	63	56



Free blowing						
Voltage V	n min <sup>-1</sup>	V m <sup>3</sup> /h	P W	I A	Lp dB(A)	SFP kW/m <sup>3</sup> /s
10	1430	8760	980	1.60	63	0.40
8	1190	7230	590	1.05	59	0.29
6	870	5360	265	0.50	52	0.18
4	550	3380	90	0.20	42	0.10

### Performance curves RDD EC 450 B

Frequency	Hz	Tot.	125	250	500	1k	2k	4k	8k	
L <sub>WA</sub> Inlet side		dB(A)	81	70	75	75	74	73	68	62
L <sub>WA</sub> Outlet side		dB(A)	86	76	77	77	81	76	69	62

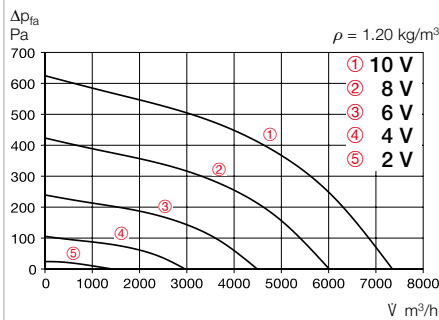


Free blowing						
Voltage V	n min <sup>-1</sup>	V m <sup>3</sup> /h	P W	I A	Lp dB(A)	SFP kW/m <sup>3</sup> /s
10	1800	10760	2015	2.95	69	0.67
8	1490	8960	1180	1.80	65	0.48
6	1100	6430	525	0.92	58	0.29
4	700	4115	180	0.35	48	0.16

Type	Ref. no.	Speed	Flow rate Free blowing	Noise sound pressure	Power consumption	Current consump.		Wiring diagram	Max. air flow temp.	Wgt net	Speed potentiometer				
						at rated voltage	with control				Flush-mounted	Surf.-mounted			
		min <sup>-1</sup>	m <sup>3</sup> /h	dB(A) in 4 m	W	A	A	No.	°C	°C	kg	Type	Ref. no.	Type	Ref. no.
<b>Single phase alternating current, 1~, 230 V, 50 Hz, EC motor, protection category IP54</b>															
<b>RDW EC 450</b>	07397	1300	8050	59.5	110	4.9	4.9	1147	40	-	39	<b>PU 24</b>	01736	<b>PA 24</b>	01737
<b>Three phase current, 3~, 400 V, 50 Hz, EC motor, protection category IP54</b>															
<b>RDD EC 450 A</b>	07382	1425	8865	62.5	1400	2.2	2.4	1148	45	-	39	<b>PU 24</b>	01736	<b>PA 24</b>	01737
<b>RDD EC 450 B</b>	07395	1800	10736	68.5	2810	4.3	4.2	1148	60	-	45	<b>PU 24</b>	01736	<b>PA 24</b>	01737

### Performance curves VDW EC 450

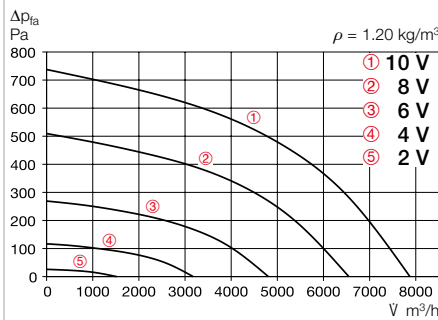
Frequency	Hz	Tot.	125	250	500	1k	2k	4k	8k	
L <sub>WA</sub> Inlet side		dB(A)	70	59	64	64	63	62	57	51
L <sub>WA</sub> Outlet side		dB(A)	76	67	68	68	72	67	60	53



Free blowing						
Voltage V	n min <sup>-1</sup>	V m <sup>3</sup> /h	P W	I A	Lp dB(A)	SFP kW/m <sup>3</sup> /s
10	1300	7354	862	4.0	59	0.42
8	1068	6018	487	2.0	55	0.29
6	802	4493	217	1.0	49	0.17
4	533	2966	78	0.5	36	0.10

### Performance curves VDD EC 450 A

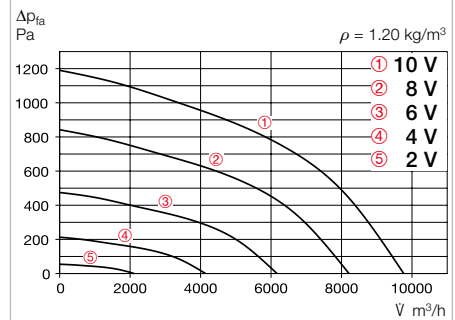
Frequency	Hz	Tot.	125	250	500	1k	2k	4k	8k	
L <sub>WA</sub> Inlet side		dB(A)	73	62	67	67	66	65	60	54
L <sub>WA</sub> Outlet side		dB(A)	79	70	71	71	75	70	63	56



Free blowing						
Voltage V	n min <sup>-1</sup>	V m <sup>3</sup> /h	P W	I A	Lp dB(A)	SFP kW/m <sup>3</sup> /s
10	1430	7990	1130	1.80	62	0.51
8	1190	6690	670	1.15	58	0.36
6	870	4850	290	0.55	51	0.22
4	550	3090	95	0.20	42	0.11

### Performance curves VDD EC 450 B

Frequency	Hz	Tot.	125	250	500	1k	2k	4k	8k	
L <sub>WA</sub> Inlet side		dB(A)	79	68	73	73	72	71	66	60
L <sub>WA</sub> Outlet side		dB(A)	85	76	77	77	81	76	69	62



Free blowing						
Voltage V	n min <sup>-1</sup>	V m <sup>3</sup> /h	P W	I A	Lp dB(A)	SFP kW/m <sup>3</sup> /s
10	1800	9960	2250	3.3	68	0.81
8	1500	8110	1330	2.0	64	0.59
6	1090	5980	570	0.95	57	0.34
4	690	3780	190	0.38	47	0.18

Type	Ref. no.	Speed	Flow rate Free blowing	Noise sound pressure	Power consumption	Current consump.		Wiring diagram	Max. air flow temp.	Wgt net	Speed potentiometer				
						at rated voltage	with control				Flush-mounted	Surf.-mounted			
		min <sup>-1</sup>	m <sup>3</sup> /h	dB(A) in 4 m	W	A	A	No.	°C	°C	kg	Type	Ref. no.	Type	Ref. no.
<b>Single phase alternating current, 1~, 230 V, 50 Hz, EC motor, protection category IP54</b>															
<b>VDW EC 450</b>	07396	1300	7355	59	1120	4.7	4.7	1147	40	-	41	<b>PU 24</b>	01736	<b>PA 24</b>	01737
<b>Three phase current, 3~, 400 V, 50 Hz, EC motor, protection category IP54</b>															
<b>VDD EC 450 A</b>	07381	1410	7883	62	1450	2.2	2.3	1148	45	-	41	<b>PU 24</b>	01736	<b>PA 24</b>	01737
<b>VDD EC 450 B</b>	07392	1800	9771	68	2800	4.3	4.2	1148	60	-	47	<b>PU 24</b>	01736	<b>PA 24</b>	01737