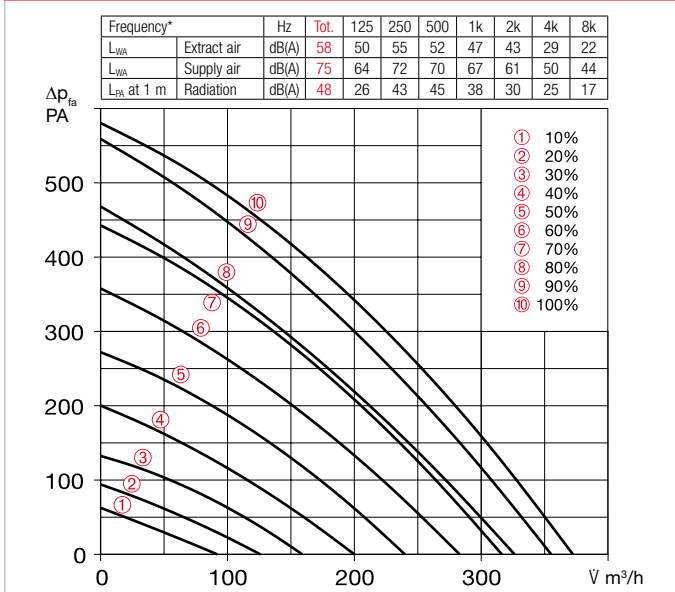


Performance curves KWL 340 D



*Sound information relate to Vref. according to ERP data sheet.

Slide switch control element

KWL BE ECO Ref. no. 20246

Three-step slide switch including operation indicator, for flush-mounted installation. Function see left. Dim. mm (W x H x D) 80 x 80 x 37

Casing for surface installation

KWL APG Ref. no. 04270

Dim. mm (W x H x D) 83 x 83 x 41



Touch control element

KWL BE Touch bl

(black) Ref. no. 20244

KWL BE Touch wh

(white) Ref. no. 20245

With graphic display, for flush-mounted installation. Function see left. Connection of up to 6 pcs. possible (additional power supply unit may be required). Can be integrated in common switch ranges with the dimensions mm (W x H x D) 55 x 55 x 35, Dim. with frame mm (W x H x D) 88 x 88 x 35

Casing for surface installation

KWL APG Touch bl No. 40178

KWL APG Touch wh No. 40177

Dim mm (W x H x D) 85 x 85 x 25



Control line cable

KWL-SL eC 5m Ref. no. 40179

KWL-SL eC 10m Ref. no. 40180

Control line cables in 5 or 10 meters, suitable for KWL-BE ECO / Touch as well as room sensor.

Technical data	KWL 340 D R/L	For ceiling installation				
Right-hand version	KWL 340 D R	Ref. no. 40059				
Left-hand version	KWL 340 D L	Ref. no. 40060				
Flow rate at level 1) 2)		10	6	6	4	2
Supply air/extract air V m³/h		372	326	283	200	126
Power consumption fans 2xW 1)		79	56	40	20	10
Voltage/Frequency		1~, 230 V, 50 Hz				
Rated current A – ventilation		1.2				
– preheating		5.6				
– max. total		1.2 (6.8 incl. preheater, accessories)				
Electric preheater kW		1.3 kW (accessories)				
Summer bypass		automatic (adjustable), with heat exchanger cover				
Wiring diagram no.		1433				
Temperature operating range		–20 °C to +40 °C				
Installation temperature		+5 °C to +40 °C (90% rel. humidity, non-condensing)				
Weight approx. kg		77				

1) At 0 Pa, performance levels adjustable. 2) Volume reduction by approx. 10% when using pollen filter.

3) AK = Activated carbon filter

KNX/EIB module

KWL-KNX Connect No. 20253

For integrating the ventilation unit in a KNX system. For switch cabinet installation (1 space unit required).



Room sensors

KWL-CO2 eC Ref. no. 20248

KWL-FTF eC Ref. no. 20249

KWL-VOC eC Ref. no. 20247

For measuring the CO₂, mixed gas (VOC) concentration or relative room air humidity. Please note the maximum number of sensors, additional power supply unit may be required.

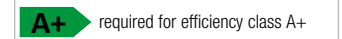
Dim. mm (W x H x D) 98 x 98 x 33



Electric preheater

KWL-EVH 340 D No. 04241

Electrical preheater for simple, plug-in unit installation. For preheating the intake air at very low outdoor temperatures (heat exchanger anti-icing protection). Mandatory for passive houses. Output: 1280 W.



A+ required for efficiency class A+

Extension module

KWL-EM eC Ref. no. 40155

For controlling external post-heating elements.

Dim. mm (WxHxD) 210x210x100



Motion detector

BWM Ref. no. 08323

Motion detector for detecting the presence of persons in the room. Surface-mounted wall installation (cable entry at top or bottom) or installation in flush-mounted box Ø 55 mm (cable entry at back).



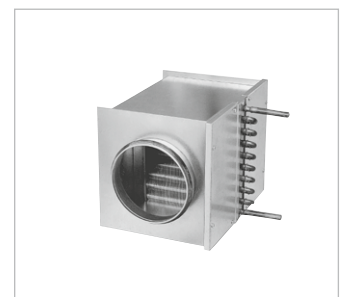
Electric post-heating element

For additional supply air heating.

EHR-R 2.4/160 Ref. no. 09435

Rectangular duct temp. sensor

KWL-LTK eC (1 pc. req.) No. 40156



Warm water post-heating element

For additional supply air heating.

WHR 160 Ref. no. 09481

Rectangular duct temp. sensor

KWL-LTK eC (2 pc. req.) No. 40156

Hydraulic unit

WHSH HE 24 V (0-10V)No.08318

Alternative:

Air temperature control

WHST 300 T38 Ref. no. 08817

Other accessories	Page
KWL peripherals	150 ff.
– Ground heat exchanger	174 ff.
– Insulated duct system	164 f.
– Air distribution systems	166 ff.
– Control lines, etc.	170 f.
Heating element, control	486 ff.
ventilation grilles, ducts,	
roof outlets	561 ff.
extract air elements, design	
ventilation valves	574 ff.

Replacement air filters

– 2 pcs. **ISO Coarse 75% (G4)**

ELF-KWL 340 D/4/4 No. 04239

– 1 pc. **ISO ePM₁, 50% (F7)**

ELF-KWL 340 D/7 No. 04240

– 1 pc. **ISO ePM_{2.5} 60% (AK)³⁾**

ELF-KWL 340 AK No. 03051

Circular duct connector

Connector with seal for unit

connection to circular duct

system with Ø 160 mm.

RVBD 160 K No. 03415