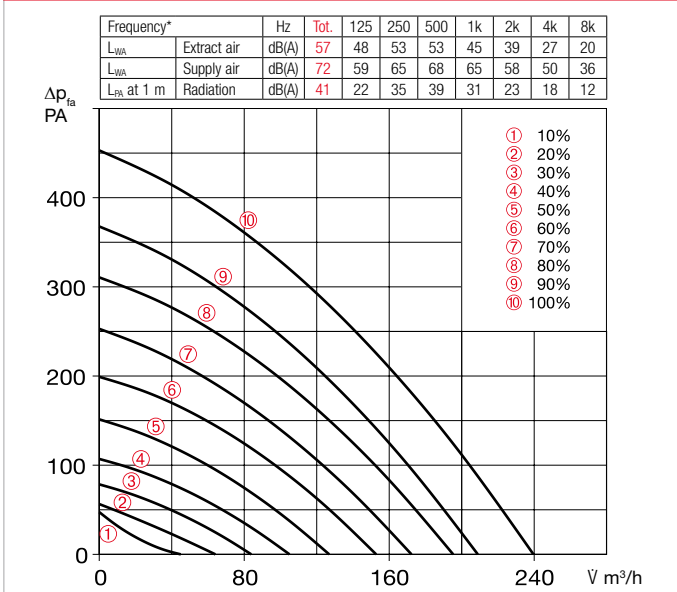


**Performance curves KWL 220 D**



\*Sound information relate to Vref. according to ERP data sheet.

**Slide switch control element**

**KWL BE ECO** Ref. no. 20246

Three-step slide switch including operation indicator, for flush-mounted installation. Function see left. Dim. mm (W x H x D) 80 x 80 x 37

**Casing for surface installation**

**KWL APG** Ref. no. 04270

Dim. mm (W x H x D) 83 x 83 x 41



**Touch control element**

**KWL BE Touch bl**

(black) Ref. no. 20244

**KWL BE Touch wh**

(white) Ref. no. 20245

With graphic display, for flush-mounted installation. Function see left. Connection of up to 6 pcs. possible (additional power supply unit may be required). Can be integrated in common switch ranges with the dimensions mm (W x H x D) 55 x 55 x 35, Dim. with frame mm (W x H x D) 88 x 88 x 35

**Casing for surface installation**

**KWL APG Touch bl** No. 40178

**KWL APG Touch wh** No. 40177

Dim mm (W x H x D) 85 x 85 x 25



**Control line cable**

**KWL-SL eC 5m** Ref. no. 40179

**KWL-SL eC 10m** Ref. no. 40180

Control line cables in 5 or 10 meters, suitable for KWL-BE ECO / Touch as well as room sensor.

Technical data	KWL 220 D R/L	For ceiling installation
<b>Right-hand version</b>	<b>KWL 220 D R</b>	Ref. no. 40057
<b>Left-hand version</b>	<b>KWL 220 D L</b>	Ref. no. 40058
<b>Flow rate at level <sup>1) 2)</sup></b>	⑩ ⑨ ⑧ ⑦ ⑥	
Supply air/extract air V m <sup>3</sup> /h	240 195 153 105 64	
Power consumption fans 2xW <sup>1)</sup>	47 30 18 10 6	
Voltage/Frequency	1~, 230 V, 50 Hz	
Rated current A – ventilation	0.8	
– preheating	4.4	
– max. total	0.8 (5.2 incl. preheater, accessories)	
Electric preheater kW	1.0 kW (accessories)	
Summer bypass	automatic (adjustable), with heat exchanger cover	
Wiring diagram no.	1433	
Temperature operating range	–20 °C to +40 °C	
Installation temperature	+5 °C to +40 °C (90% rel. humidity, non-condensing)	
Weight approx. kg	47	

<sup>1)</sup> At 0 Pa, performance levels adjustable. <sup>2)</sup> Volume reduction by approx. 10% when using pollen filter.

<sup>3)</sup> AK = Activated carbon filter

**KNX/EIB module**

**KWL-KNX Connect** No. 20253

For integrating the ventilation unit in a KNX system. For switch cabinet installation (1 space unit required).



**Room sensors**

**KWL-CO2 eC** Ref. no. 20248

**KWL-FTF eC** Ref. no. 20249

**KWL-VOC eC** Ref. no. 20247

For measuring the CO<sub>2</sub>, mixed gas (VOC) concentration or relative room air humidity. Please note the maximum number of sensors, additional power supply unit may be required.

Dim. mm (W x H x D) 98 x 98 x 33



**Electric preheater**

**KWL-EVH 220 D** No. 09636

Electrical preheater for simple, plug-in unit installation. For preheating the intake air at very low outdoor temperatures (heat exchanger anti-icing protection). Mandatory for passive houses. Output: 1000 W.



**A+** required for efficiency class A+

**Extension module**

**KWL-EM eC** Ref. no. 40155

For controlling external post-heating elements.

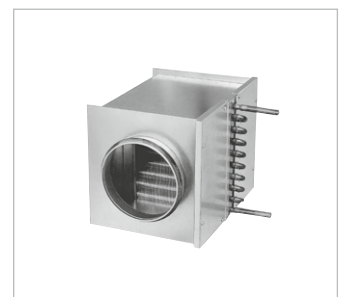
Dim. mm (WxHxD) 210x210x100



**Motion detector**

**BWM** Ref. no. 08323

Motion detector for detecting the presence of persons in the room. Surface-mounted wall installation (cable entry at top or bottom) or installation in flush-mounted box Ø 55 mm (cable entry at back).



**Electric post-heating element**

For additional supply air heating.

**EHR-R 1.2/125** Ref. no. 09433

**Rectangular duct temp. sensor**

**KWL-LTK eC** (1 pc. req.) No. 40156

**Warm water post-heating element**

For additional supply air heating.

**WHR 125** Ref. no. 09480

**Rectangular duct temp. sensor**

**KWL-LTK eC** (2 pc. req.) No. 40156

**Hydraulic unit**

**WHSH HE 24 V (0-10V)** No. 08318

Alternative:

**Air temperature control**

**WHST 300 T38** Ref. no. 08817

**Other accessories Page**

KWL peripherals	150 ff.
– Ground heat exchanger	174 ff.
– Insulated duct system	164 f.
– Air distribution systems	166 ff.
– Control lines, etc.	170 f.
Heating element, control	486 ff.
ventilation grilles, ducts, roof outlets	561 ff.
extract air elements, design	
ventilation valves	574 ff.

**Replacement air filters**

– 2 pcs. **ISO Coarse 75% (G4)**

ELF-KWL 220 D/4/4 No. 09638

– 1 pc. **ISO ePM<sub>1</sub> 50% (F7)**

ELF-KWL 220 D/7 No. 09639

– 1 pc. **ISO ePM<sub>2.5</sub> 60% (AK)<sup>3)</sup>**

ELF-KWL 220 AK No. 03050

**Circular duct connector**

**Connector with seal for unit**

**connection to circular duct**

**system with Ø 125 mm.**

RVBD 125 K No. 03414