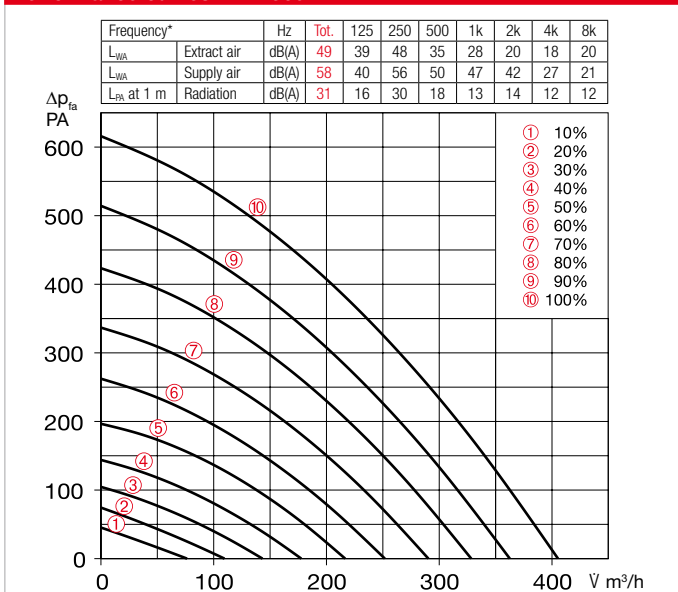


Performance curves KWL 360 W



\*Sound information relate to Vref. according to ERP data sheet.

Slide switch control element

**KWL BE ECO** Ref. no. 20246

Three-step slide switch including operation indicator, for flush-mounted installation. Function see left. Dim. mm (W x H x D) 80 x 80 x 37

Casing for surface installation

**KWL APG** Ref. no. 04270

Dim. mm (W x H x D) 83 x 83 x 41



Touch control element

**KWL BE Touch bl**

(black) Ref. no. 20244

**KWL BE Touch wh**

(white) Ref. no. 20245

With graphic display, for flush-mounted installation. Function see left. Connection of up to 6 pcs.

possible (additional power supply unit may be required). Can be integrated in common switch ranges with the dimensions mm (W x H x D) 55 x 55 x 35, Dim. with frame mm (W x H x D) 88 x 88 x 35

Casing for surface installation

**KWL APG Touch bl** No. 40178

**KWL APG Touch wh** No. 40177

Dim mm (W x H x D) 85 x 85 x 25



Control line cable

**KWL-SL eC 5m** Ref. no. 40179

**KWL-SL eC 10m** Ref. no. 40180

Control line cables in 5 or 10 meters, suitable for KWL-BE ECO / Touch as well as room sensor.

Technical data	With plastic heat exchanger					With enthalpy heat exchanger				
	Type	Ref. no.	Type	Ref. no.	Type	Ref. no.	Type	Ref. no.	Type	Ref. no.
	<b>KWL 360 W</b>	40061	<b>KWL 360 W ET</b>	40062						
<b>Flow rate at level 1) 2)</b>	10	9	8	7	6	5	4	3	2	1
Supply air/extract air V m³/h	405	328	252	178	110	403	332	264	192	121
Power consumption fans 2xW 1)	51	30	17	10	6	45	28	16	9	5
Voltage/Frequency	1~, 230 V, 50 Hz									
Rated current A – ventilation	0.5									
– preheating	6.3									
– max. total	0.5 (6.8 incl. preheater, accessories)									
Electric preheater kW	1.5 kW (accessories)									
Summer bypass	automatic (adjustable), with heat exchanger cover									
Wiring diagram no.	1433									
Temperature operating range	–20 °C to +40 °C									
Installation temperature	+5 °C to +40 °C (90% rel. humidity, non-condensing)									
Weight approx. kg	72					70				

1) At 0 Pa, performance levels adjustable. 2) Volume reduction by approx. 10% when using pollen filter.

KNX/EIB module

**KWL-KNX Connect** No. 20253

For integrating the ventilation unit in a KNX system. For switch cabinet installation (1 space unit required).



Room sensors

**KWL-CO2 eC** Ref. no. 20248

**KWL-FTF eC** Ref. no. 20249

**KWL-VOC eC** Ref. no. 20247

For measuring the CO<sub>2</sub>, mixed gas (VOC) concentration or relative room air humidity. Please note the maximum number of sensors, additional power supply unit may be required.

Dim. mm (W x H x D) 98 x 98 x 33



Electric preheater

**KWL-EVH 360/470 W** No. 07360

Electrical preheater for simple, plug-in unit installation. For preheating the intake air at very low outdoor temperatures (heat exchanger anti-icing protection). Mandatory for passive houses. Output: 1500 W.



Extension module

**KWL-EM eC** Ref. no. 40155

For controlling external post-heating elements.

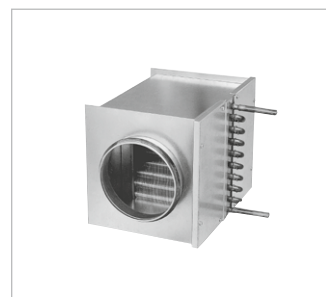
Dim. mm (WxHxD) 210x210x100



Motion detector

**BWM** Ref. no. 08323

Motion detector for detecting the presence of persons in the room. Surface-mounted wall installation (cable entry at top or bottom) or installation in flush-mounted box Ø 55 mm (cable entry at back).



Electric post-heating element

For additional supply air heating.

**EHR-R 2.4/160** Ref. no. 09435

**Rectangular duct temp. sensor**

**KWL-LTK eC** (1 pc. req.) No. 40156

Warm water post-heating element

For additional supply air heating.

**WHR 160** Ref. no. 09481

**Rectangular duct temp. sensor**

**KWL-LTK eC** (2 pc. req.) No. 40156

Hydraulic unit

**WHSH HE 24 V (0-10V)** No. 08318

Alternative:

Air temperature control

**WHST 300 T38** Ref. no. 08817

■ **Circular duct connector**  
Connector with seal for unit connection to circular duct system with Ø 160 mm.  
RVBD 160 K No. 03415

■ **Replacement air filters**  
– 2 pcs. **ISO Coarse 65% (G4)**  
ELF-KWL 360/470/4/4 No. 07371  
– 1 pc. **ISO ePM<sub>1</sub>, 50% (F7)**  
ELF-KWL 360/470/7 No. 07375  
– 1 pc. **Activated carbon filter**  
ELF-KWL 360/470 AK No. 08129

■ **Reference**  
**Enthalpy heat exchanger (accessories) for retrofitting:**  
KWL-ET 360/470 No. 07354

KWL® with heat recovery