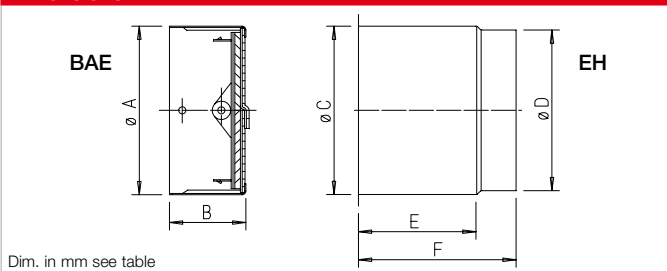


**BAE**

Approval Z-41.3-696  
no maintenance conditions

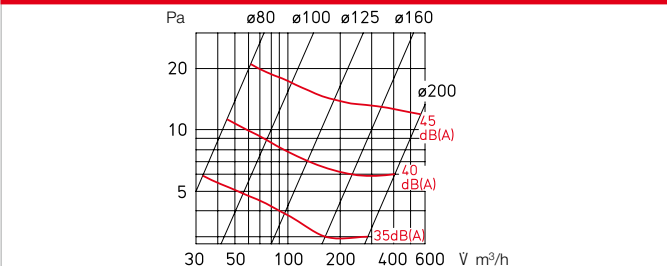


**Dimensions BAE**



Dim. in mm see table

**Pressure loss and acoustics**



**Application**

Damper element to prevent the spread of fire and smoke. For installation in ventilation shafts and ducts with the required fire resistance class K 90-18017. Suitable for insertion in spiral ducts or for installation in walls and non-fire-resistant suspended ceilings using installation sleeve EH (accessories) as well as in fire-resistant ceilings as ceiling seals.

- Installation outside of the shaft wall is possible.
- Any air flow direction, i.e. for supply air and extract air.
- Low flow resistance, even at high air flow rates.
- Connection to fume extractor or extraction hood is possible.
- Low-noise.
- Application in residential and commercial areas, e.g. internal toilets, kitchenettes, etc.

**Function**

When an air temperature of +72 °C is exceeded, the integrated fusible link releases the semi-circular damper blades which close abruptly by spring force. Two safety brackets lock the shutters.

- Design**  
Cylindrical duct sleeve with butterfly valve and integrated fusible link.

**Delivery**

Shrink-wrapped in plastic film.

**Official approval**

The proof of suitability of this damper element for ventilation systems according to DIN 18017 has been provided by means of appropriate tests. General technical approval from the DIBt with no. Z-41.3-696.

**Installation and setting**

- The installation and operating instructions contain exact specifications with regard to application and installation.
- The specifications in the related approval must be observed.

**Special features**

- No maintenance conditions.
- Cleaning and inspection together with the associated ventilation system.
- Insertion in spiral ducts without additional brickwork frame.

**Accessories**

**End switch**

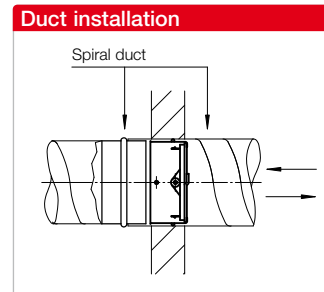
For BAE monitoring and signalling the operating status to the central building management system. Attachable to all ND, simple snap-in installation.

**BA-S** Ref. no. 02585  
Switch as changeover contact IP67  
Max. load 5–250 V / 6 A (2 A ind.)  
Connect. cable 50 cm long / 3 x 0.34 mm<sup>2</sup>  
Wiring diagram no. 830

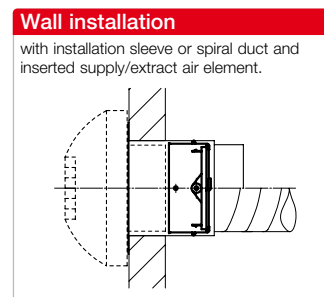


**Installation examples**

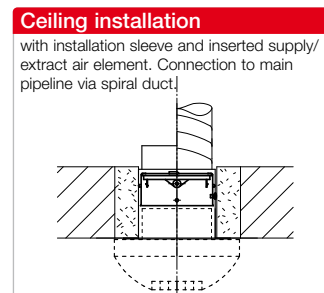
- Duct installation**  
The element is installed by simple insertion (e.g. in spiral ducts) and fixed in the wall together with the duct. Installation is possible on both sides, regardless of the air flow direction.



- Wall installation**  
With installation sleeve EH (accessories) in walls made from brickwork, aerated concrete or plasterboard, shaft partition walls in F 90 and F 30 or system-tested walls over 40 mm thick. Installation is possible on both sides, regardless of the air flow direction.



- Ceiling installation**
  - Possible in non-fire-resistant suspended ceilings.
  - In fire-resistant ceilings as ceiling seal if no free cross-section is required.



**Order data**

Type	Ref. no.	Dim. in mm		Weight aprx. kg	Accessories:					
		Ø A	B		Installation sleeve	Ref. no.	Dimensions in mm			
						Ø C	Ø D	E	F	
BAE 80	02624	78	60	0.17	EH 80	02639	100	98	110	140
BAE 100	02625	98	60	0.23	EH 100	02640	125	123	110	140
BAE 125	02626	123	60	0.30	EH 125	02641	160	158	110	140
BAE 160	02627	158	60	0.40	EH 160	02642	200	198	110	140
BAE 200	02628	198	60	0.55	EH 200					

**BAK**

EU Certificate of  
Constancy of Performance  
0749-CPR-BC1-606-0464-15650.69-2517



EU Certificate of Constancy of Performance  
0749-CPR-BC1-606-0464-15650.69-2517

Fire dampers are construction products according to the European Construction Products Regulation. They have an official Certificate of Constancy of Performance and a Declaration of Performance according to European construction law.

**Application**

Fire damper to prevent the spread of fire and smoke. For installation in walls, ceilings or ventilation shafts which serve as fire sections with the required fire resistance class EI 90 S. Suitable for wall and ceiling installation or as overflow openings. Can be inserted in spiral ducts. Installation sleeve EH (accessories) recommended for one-sided duct connection.

**Function**

When an air temperature of +72 °C is exceeded, the integrated fusible link releases the semi-circular damper blades which close abruptly by spring force. Two safety brackets lock the shutters.

**European certification**

Declaration of Performance according to European Construction Products Regulation 305/2011.

- Tested according to EN 1366-2.
- Classification according to EN 13501-3: EI 90 (ve, ho, i↔o) S – (300 Pa). Room closure and insulation 90 min., vertical, horizontal, applicable in both directions, sealed against 300 Pa, even during fire.
- Complies with European product standard DIN EN 15650.

**Special features**

- Installation directly in spiral duct in the room-closing component.
- Any air flow direction, i.e. for supply air and extract air.
- Low flow resistance, even at high air flow rates.
- Simple fixation with installation sleeve EH (accessories).

**Design**

Cylindrical duct sleeve with butterfly valve and integrated fusible link.

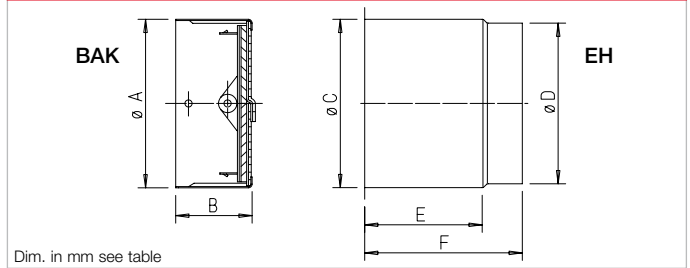
**Delivery**

Individually shrink-wrapped in plastic film.

**Installation and setting**

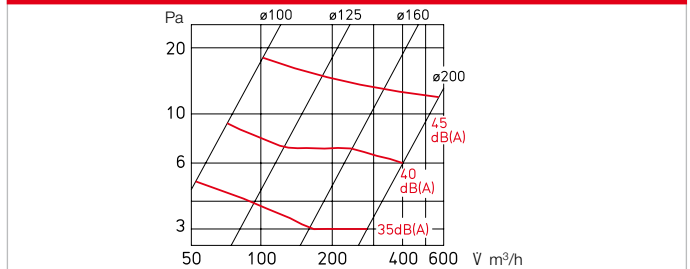
- The installation and operating instructions contain exact specifications with regard to application and installation.
- The specifications in the related approval must be observed.

**Dimensions BAK**



Dim. in mm see table

**Pressure loss and acoustics**



**Accessories**

**End switch**

For BAK monitoring and signalling the operating status to the central building management system. Attachable to all ND, simple snap-in installation.

**BA-S** Ref. no. 02585  
Switch as changeover contact IP 67  
Max. load 5–250 V / 6 A (2 A ind.)  
Connect. cable 50 cm long / 3 x 0.34 mm<sup>2</sup>  
Wiring diagram no. 830



**Installation examples**

**Duct installation in walls or ceilings**

The element is installed by simple insertion in the spiral duct or in the installation sleeve EH (accessories) and then fixed in the wall, ceiling or shaft wall. Installation is possible regardless of the air flow direction. Subsequent one-sided or double-sided duct connection.

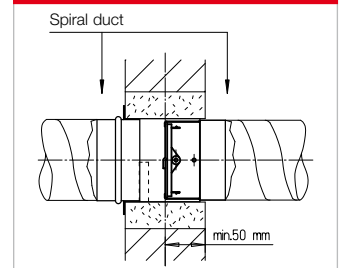
**Wall or ceiling installation**

With installation sleeve EH (accessories) in walls made from brickwork, aerated concrete or plasterboard or system-tested walls over 100 mm thick. Installation is possible on both sides, regardless of the air flow direction.

**Overflow opening**

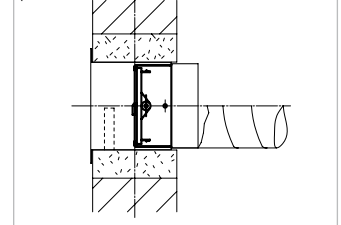
Without one-sided or double-sided duct connection, as overflow opening, can only be installed where there is no reason to fear smoke overflow below the trigger temperature. Approval required from building inspection authority in individual cases.

**Duct installation**



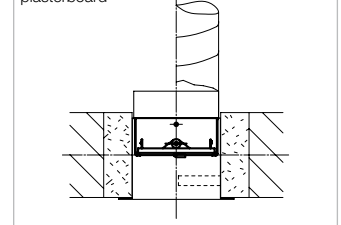
**Wall installation**

in brickwork, aerated concrete or plasterboard



**Ceiling installation**

in brickwork, aerated concrete or plasterboard



**Order data**

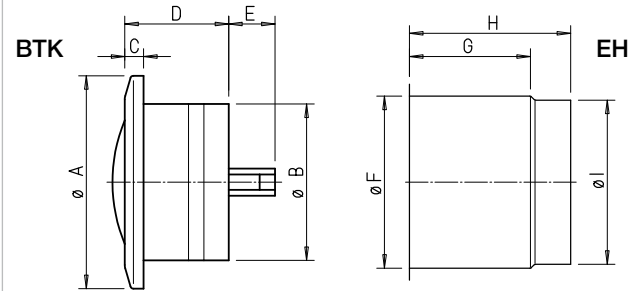
Type	Ref. no.	Dim. in mm			Weight aprx. kg	Accessories:				
		ø A	B			Installation sleeve	Ref. no.	Dimensions in mm		
BAK 100	02620	98	60	0.24	EH 100	02639	100	98	110	140
BAK 125	02621	123	60	0.32	EH 125	02640	125	123	110	140
BAK 160	02622	158	60	0.46	EH 160	02641	160	158	110	140
BAK 200	02623	198	60	0.64	EH 200	02642	200	198	110	140

**BTK**

EU Certificate of  
Constasy of Performance  
0749-CPR-BC1-606-0464-15650.69-2517



**Dimensions BTK**



Dim. in mm see table

Fire dampers are construction products according to the European Construction Products Regulation. They have an official Certificate of Constasy of Performance and a Declaration of Performance according to European construction law.

**Application**

Fire damper to prevent the spread of fire and smoke. For installation in walls, ceilings or ventilation shafts which serve as fire sections with the required fire resistance class EI 90 S. Suitable for wall and ceiling installation or as overflow openings. Can be inserted in spiral ducts. Installation sleeve EH (accessories) recommended for one-sided duct connection.

**Function**

When an air temperature of +72 °C is exceeded, the fusible link responds. The built-in pressure spring automatically closes the valve.

**European certification**

- Declaration of Performance according to European Construction Products Regulation 305/2011.
- Tested according to EN 1366-2.
- Classification according to EN 13501-3: EI 90 (ve, ho, i↔o) S – (300 Pa). Room closure and insulation 90 min., vertical,

horizontal, applicable in both directions, sealed against 300 Pa, even during fire.

- Complies with European product standard DIN EN 15650.

**Special features**

- Installation directly in spiral duct in the room-closing component.
- Officially tested fire protection disc valve with low air noise in case of high pressure drop.
- High damping value.
- Attractive, functional design.
- Simple adjustment, which cannot be changed by unauthorised persons, reduces the work load.
- Easily removable for inspection and cleaning, without unauthorised adjustment being possible.
- Large operating range.

**Design**

Valve body made of plastic, aerodynamically optimal design with inner cone and inlet ring. Cylindrical duct sleeve with butterfly valve and integrated fusible link.

**Delivery**

Individually shrink-wrapped in plastic film.

**Installation and setting**

- The installation and operating instructions contain exact specifications with regard to application and installation.
- The specifications in the related approval must be observed.

**Installation examples**

- Duct installation in walls or ceilings**  
The element is installed by simple insertion in the spiral duct or in the installation sleeve EH (accessories) and then fixed in the wall, ceiling or shaft wall. Installation is possible regardless of the air flow direction. Subsequent one-sided duct connection.

**Overflow opening**

Without one-sided or double-sided duct connection, as overflow opening, can only be installed where there is no reason to fear smoke overflow below the trigger temperature. Approval required from building inspection authority in individual cases.

**Accessories**

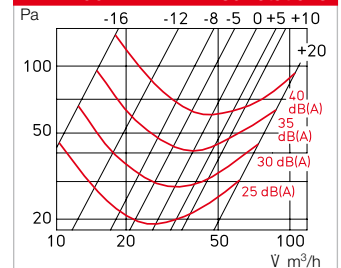
**End switch**

For BTK monitoring and signalling the operating status to the central building management system. Attachable to all ND, simple snap-in installation.

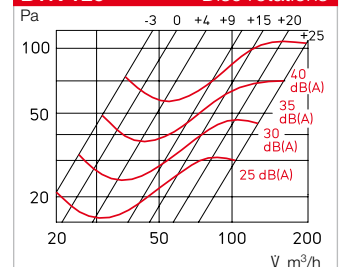
**BA-S** Ref. no. 02585  
Switch as changeover contact IP 67  
Max. load 5–250 V / 6 A (2 A ind.)  
Connect. cable 50 cm long / 3 x 0.34 mm<sup>2</sup>  
Wiring diagram no. 830



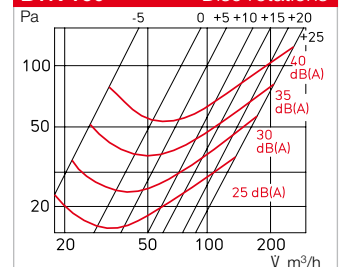
**BTK 100 Disc rotations**



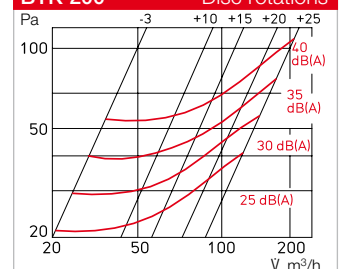
**BTK 125 Disc rotations**



**BTK 160 Disc rotations**



**BTK 200 Disc rotations**



**Order data**

Type	Ref. no.	Dimensions in mm					Weight aprx. kg	Accessories:					
		∅ A	∅ B	C	D	E		Installation sleeve	Ref. no.	∅ F	G	H	∅ I
BTK 100	02633	150	98	19	129	20	0.45	EH 100	02639	100	110	140	98
BTK 125	02630	165	123	19	129	33	0.60	EH 125	02640	125	110	140	123
BTK 160	02631	220	158	19	129	51	0.85	EH 160	02641	160	110	140	158
BTK 200	02632	245	198	19	129	71	1.20	EH 200	02642	200	110	140	198