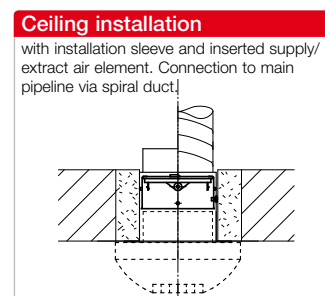
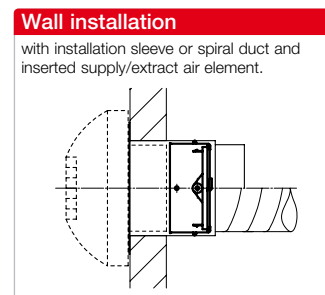
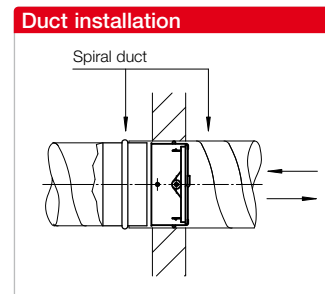


- Application**
 Damper element to prevent the spread of fire and smoke. For installation in ventilation shafts and ducts with the required fire resistance class K 90-18017. Suitable for insertion in spiral ducts or for installation in walls and non-fire-resistant suspended ceilings using installation sleeve EH (accessories) as well as in fire-resistant ceilings as ceiling seals.
- Installation outside of the shaft wall is possible.
- Any air flow direction, i.e. for supply air and extract air.
- Low flow resistance, even at high air flow rates.
- Connection to fume extractor or extraction hood is possible.
- Low-noise.
- Application in residential and commercial areas, e.g. internal toilets, kitchenettes, etc.
- Design**
 Cylindrical duct sleeve with butterfly valve and integrated fusible link.
- Delivery**
 Shrink-wrapped in plastic film.
- Installation and setting**
 - The installation and operating instructions contain exact specifications with regard to application and installation.
 - The specifications in the related approval must be observed.
- Official approval**
 The proof of suitability of this damper element for ventilation systems according to DIN 18017 has been provided by means of appropriate tests. General technical approval from the DIBt with no. Z-41.3-696.
- Special features**
 - No maintenance conditions.
 - Cleaning and inspection together with the associated ventilation system.
 - Insertion in spiral ducts without additional brickwork frame.

- Accessories**
 - End switch**
 For BAE monitoring and signalling the operating status to the central building management system. Attachable to all ND, simple snap-in installation.
BA-S Ref. no. 02585
 Switch as changeover contact IP67
 Max. load 5–250 V / 6 A (2 A ind.)
 Connect. cable 50 cm long / 3 x 0.34 mm²
 Wiring diagram no. 830



- Installation examples**
 - Duct installation**
 The element is installed by simple insertion (e.g. in spiral ducts) and fixed in the wall together with the duct. Installation is possible on both sides, regardless of the air flow direction.
 - Wall installation**
 With installation sleeve EH (accessories) in walls made from brickwork, aerated concrete or plasterboard, shaft partition walls in F 90 and F 30 or system-tested walls over 40 mm thick. Installation is possible on both sides, regardless of the air flow direction.
 - Ceiling installation**
 - Possible in non-fire-resistant suspended ceilings.
 - In fire-resistant ceilings as ceiling seal if no free cross-section is required.



Order data				Accessories:						
Type	Ref. no.	Dim. in mm		Weight aprx. kg	Installation sleeve	Ref. no.	Dimensions in mm			
		Ø A	B				Ø C	Ø D	E	F
BAE 80	02624	78	60	0.17	EH 100	02639	100	98	110	140
BAE 100	02625	98	60	0.23	EH 125	02640	125	123	110	140
BAE 125	02626	123	60	0.30	EH 160	02641	160	158	110	140
BAE 160	02627	158	60	0.40	EH 200	02642	200	198	110	140
BAE 200	02628	198	60	0.55						

BAK

EU Certificate of
Constancy of Performance
0749-CPR-BC1-606-0464-15650.69-2517



EU Certificate of Constancy of Performance
0749-CPR-BC1-606-0464-15650.69-2517

Fire dampers are construction products according to the European Construction Products Regulation. They have an official Certificate of Constancy of Performance and a Declaration of Performance according to European construction law.

Application

Fire damper to prevent the spread of fire and smoke. For installation in walls, ceilings or ventilation shafts which serve as fire sections with the required fire resistance class EI 90 S. Suitable for wall and ceiling installation or as overflow openings. Can be inserted in spiral ducts. Installation sleeve EH (accessories) recommended for one-sided duct connection.

Function

When an air temperature of +72 °C is exceeded, the integrated fusible link releases the semi-circular damper blades which close abruptly by spring force. Two safety brackets lock the shutters.

European certification

- Declaration of Performance according to European Construction Products Regulation 305/2011.

- Tested according to EN 1366-2.
- Classification according to EN 13501-3: EI 90 (ve, ho, i↔o) S – (300 Pa). Room closure and insulation 90 min., vertical, horizontal, applicable in both directions, sealed against 300 Pa, even during fire.
- Complies with European product standard DIN EN 15650.

Special features

- Installation directly in spiral duct in the room-closing component.
- Any air flow direction, i.e. for supply air and extract air.
- Low flow resistance, even at high air flow rates.
- Simple fixation with installation sleeve EH (accessories).

Design

Cylindrical duct sleeve with butterfly valve and integrated fusible link.

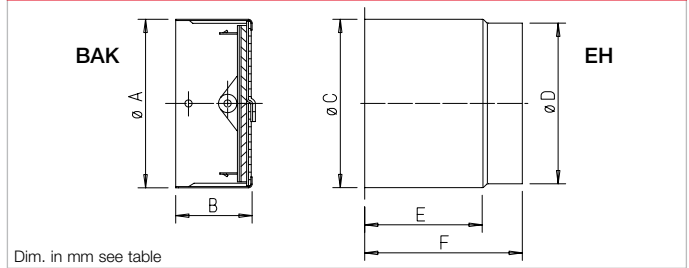
Delivery

Individually shrink-wrapped in plastic film.

Installation and setting

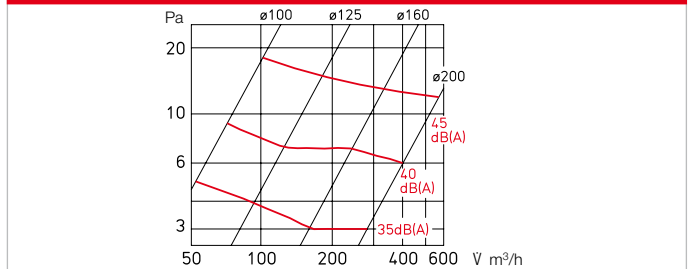
- The installation and operating instructions contain exact specifications with regard to application and installation.
- The specifications in the related approval must be observed.

Dimensions BAK



Dim. in mm see table

Pressure loss and acoustics



Accessories

End switch

For BAK monitoring and signalling the operating status to the central building management system. Attachable to all ND, simple snap-in installation.

BA-S Ref. no. 02585
Switch as changeover contact IP 67
Max. load 5–250 V / 6 A (2 A ind.)
Connect. cable 50 cm long / 3 x 0.34 mm²
Wiring diagram no. 830



Installation examples

Duct installation in walls or ceilings

The element is installed by simple insertion in the spiral duct or in the installation sleeve EH (accessories) and then fixed in the wall, ceiling or shaft wall. Installation is possible regardless of the air flow direction. Subsequent one-sided or double-sided duct connection.

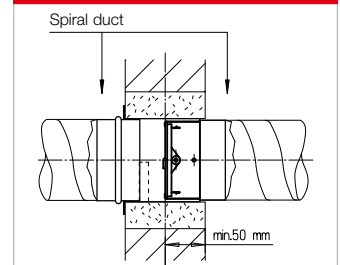
Wall or ceiling installation

With installation sleeve EH (accessories) in walls made from brickwork, aerated concrete or plasterboard or system-tested walls over 100 mm thick. Installation is possible on both sides, regardless of the air flow direction.

Overflow opening

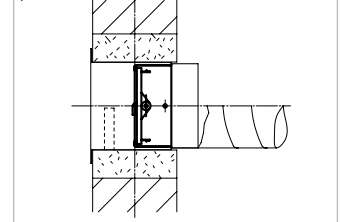
Without one-sided or double-sided duct connection, as overflow opening, can only be installed where there is no reason to fear smoke overflow below the trigger temperature. Approval required from building inspection authority in individual cases.

Duct installation



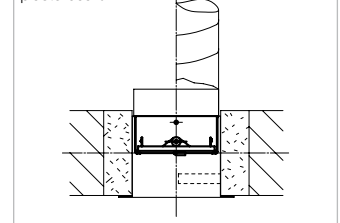
Wall installation

in brickwork, aerated concrete or plasterboard



Ceiling installation

in brickwork, aerated concrete or plasterboard



Order data				Accessories:						
Type	Ref. no.	Dim. in mm		Weight aprx. kg	Installation sleeve		Dimensions in mm			
		Ø A	B		Ref. no.	Ø C	Ø D	E	F	
BAK 100	02620	98	60	0.24	EH 100	02639	100	98	110	140
BAK 125	02621	123	60	0.32	EH 125	02640	125	123	110	140
BAK 160	02622	158	60	0.46	EH 160	02641	160	158	110	140
BAK 200	02623	198	60	0.64	EH 200	02642	200	198	110	140