



## VL-CZPVU-(R/L)-E

### Residential Lossnay

The residential Lossnay range of Mechanical Ventilation with Heat Recovery (MVHR) units create an environment of constant clean and healthy air at home.

These systems are designed to continuously extract from bathrooms, kitchens, toilets, and utility rooms where air can become polluted. The Lossnay supplies a balanced flow of fresh air from outside to living spaces such as bedrooms and living rooms. Whilst doing this the unit minimises the energy lost by recovering the heat from the extracted air and transferring this to the supplied fresh air.

#### Key Features

- Ultra quiet noise levels
- Optional particulate matter filter, including NOx filtration
- Full summer bypass function
- Digital controller included for ease of commissioning and use
- Automated boost via live switch or volt free contact
- Cloud control

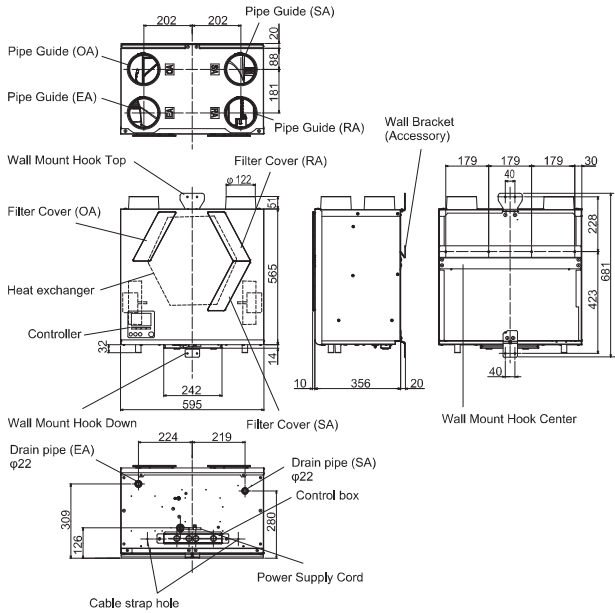
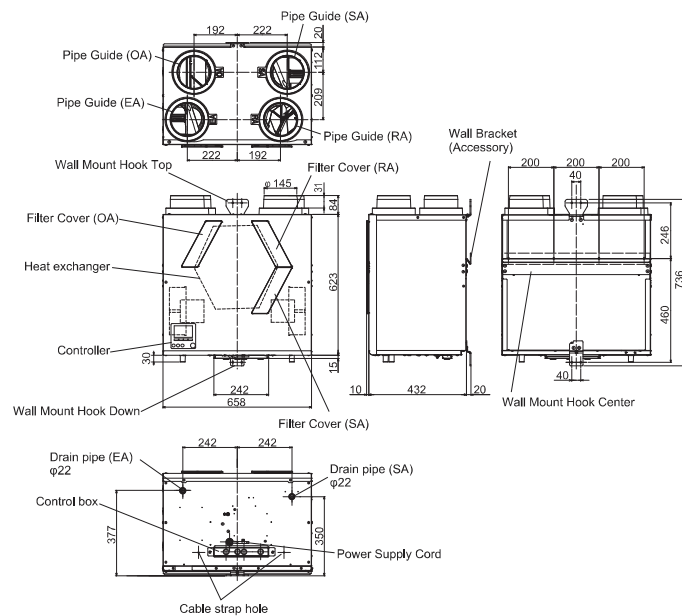
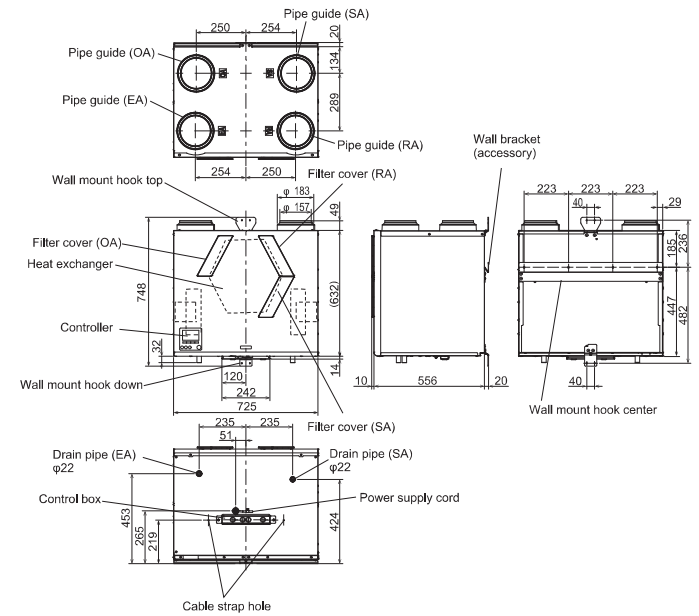


MODEL	VL-250CZPVU-R/L-E		VL-350CZPVU-R/L-E		VL-500CZPVU-R/L-E	
DIMENSIONS H X W X D (MM)	563 x 595 x 386		623 x 658 x 462		632 x 725 x 586	
WEIGHT (KG)	26		32		39	
ELECTRICAL POWER SUPPLY	220-240V 50Hz		220-240V 50Hz		220-240V 50Hz	
MAX RUNNING CURRENT (A)	1.0		1.32		2.3	
SUMMER BYPASS	Full Bypass		Full Bypass		Full Bypass	
SPIGOT DIAMETER (MM)	125		150		160 / 180	
STANDARD FILTER (ISO 16890:2016/EN779:2012)	OUTSIDE AIR	Coarse 55% / G3	Coarse 55% / G3		Coarse 55% / G3	
	RETURN AIR	Coarse 55% / G3	Coarse 55% / G3		Coarse 55% / G3	
OPTIONAL FILTER(S)	SUPPLY AIR	NOx 90%	NOx 90%		NOx 90%	
	OUTSIDE AIR	ePM2.5 50%	ePM2.5 50%		ePM2.5 50%	
SAP 2012 PCDB DATA	SFP W/(L/S)	HEAT EXCHANGE EFFICIENCY (%)	SFP W/(L/S)	HEAT EXCHANGE EFFICIENCY (%)	SFP W/(L/S)	HEAT EXCHANGE EFFICIENCY (%)
K + 1 (21 L/S)	0.62	90	0.86	90	0.80	91
K + 2 (29 L/S)	0.67	89	0.80	90	0.72	90
K + 3 (37 L/S)	0.79	88	0.84	89	0.74	90
K + 4 (45 L/S)	1.00	87	0.96	89	0.82	89
K + 5 (53 L/S)	1.19	87	1.08	88	0.91	88
K + 6 (61 L/S)	-	-	1.28	87	1.09	88
K + 7 (69 L/S)	-	-	-	-	1.24	88

## Product Dimensions

VL-250CZPVU-(R/L)-E, VL-350CZPVU-(R/L)-E & VL-500CZPVU-(R/L)-E

All measurement in mm

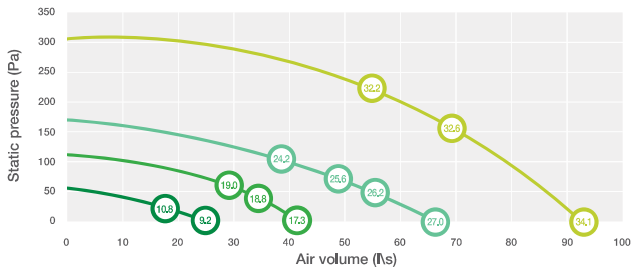
VL-250CZPVU-L-E<sup>\*1</sup>VL-350CZPVU-L-E<sup>\*1</sup>VL-500CZPVU-L-E<sup>\*1</sup>

\*1 Left Fresh Air intake models displayed.  
Please refer to installation manual for  
Right Fresh Air Intake dimensions.

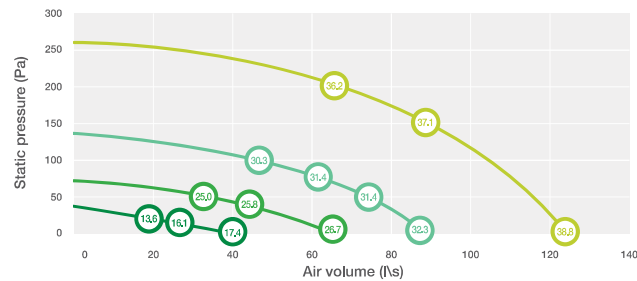
## Performance curves and breakout sound data

VL-250CZPVU-(R/L)-E, VL-350CZPVU-(R/L)-E & VL-500CZPVU-(R/L)-E

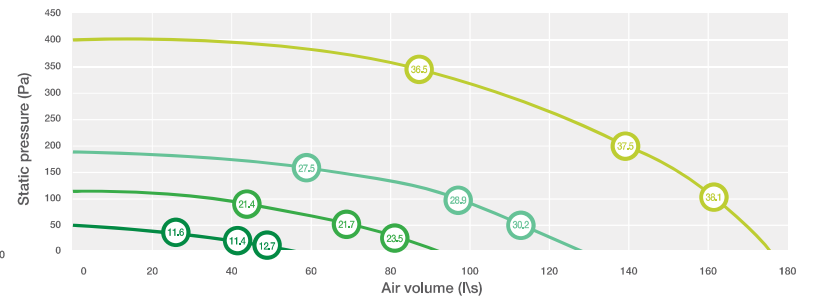
VL-250CZPVU-(R/L)-E



VL-350CZPVU-(R/L)-E



VL-500CZPVU-(R/L)-E



**Note:** dB(A) level measured at 3m hemispherical. Full sound power spectrum available for breakout and in-duct upon request.