

# TERLOK®

**RING LEADER**  
AIR VALVE FIXING RING

**Available in:**  
80, 100, 125, 150,  
160, 200 &  
250mm

TERLOK®

100mm

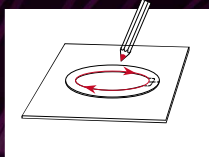
Installation **without** aggravation!





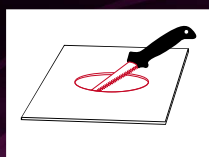
### SUSPENDED CEILINGS

#### STEP 1



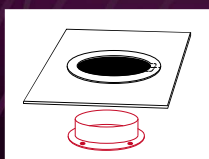
Using the Ring Leader as a template, draw around the inner edge to mark the ceiling tile.

#### STEP 2



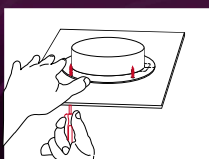
Cut out the ceiling tile to the shape of the template.

#### STEP 3



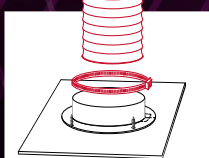
Lay the Ring Leader flat on top of the ceiling tile (branding face up).

#### STEP 4



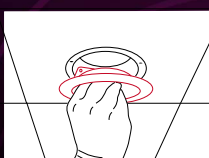
Screw the mounting ring to the Ring Leader.\*

#### STEP 5



Connect the ducting onto the mounting ring using your hose banding.

#### STEP 6

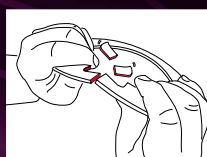


Twist in the air valve to finish.

\*(Cordless/impact driver can also be used on a low torque setting).

### SOLID CEILINGS

#### STEP 1



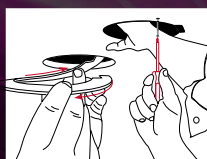
Snap along the perforations to split the ring. This allows the Ring Leader to be inserted through the ceiling hole. See step 3.

#### STEP 2



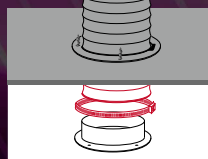
Using the Ring Leader as a template, draw around the inner edge to mark the ceiling. Cut out the plasterboard to the shape of the template.

#### STEP 3



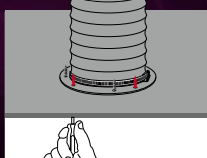
Twist the Ring Leader through the hole, aligning the notches. Whilst holding the Ring Leader against the ceiling, screw into place.\*

#### STEP 4



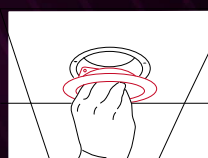
Pull Flexi-Duct through the ceiling hole & connect to the mounting ring using your hose banding.

#### STEP 5



Push the assembly back through the hole, aligning the hose band clip with the notch. Simply screw the mounting ring into place.

#### STEP 6



Twist in the air valve to finish.