

ACOB1A Twin Fan Controller



- Manual or auto changeover facilities
- 2 to 24 hour adjustable duty sharing
- Diagnostic program facility on start up
- Suitable for 1 phase twin fan units up to 8 amps
- Can be wired in conjunction with speed controllers
- Volt free contacts fitted as standard
- Neon failure indicators

Specification

Supply Voltage: 230 to 240V/1ph/50Hz.
 Maximum Current Capacity: 0.1 to 8.0 amps.
 Operating temperature: 0°C to +40°C.

IP rating: IP40.

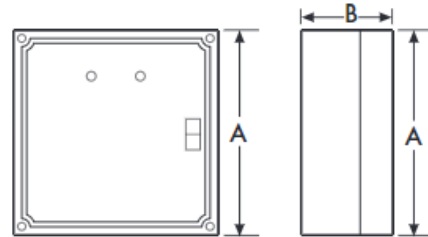
Fuse Size: T rated 15 amp glass fuse (5x20mm).

Models

Stock Ref

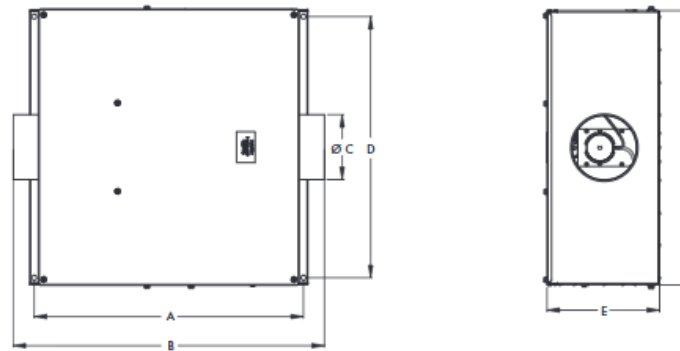
ACOB1A

Dimensions (mm)



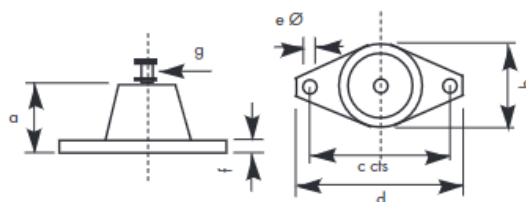
Size	A	B	kg
ACOB1A	125	56	0.28

Dimensions (mm)



Stock Ref	Duct Diameter mm						Weight kg
	A	B	ØC	D	E	F	
QPTW100C	610	705	100	591	256	622	26
QPTW125C	610	705	125	591	256	622	26
QPTW150C	610	705	150	591	256	622	26
QPTW250C	925	1020	250	798	354	829	48
QPTW315C	1255	1353	315	1145	536	1176	88
QPTW400C	1255	1353	400	1145	536	1176	90
QPTW500C	1492	1590	500	1533	675	1564	190

Anti Vibration Mountings



Stock ref	a	b	c	d	eØ	f	g
68MP033G	27	37	54	67	7	3	M8