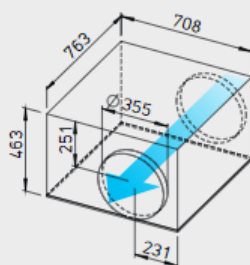


### SilentBox® SB EC



Virtually noise-free with high air flow volumes against high resistances. Ideal for maintenance and cleaning.



Dim. in mm

#### ■ Specification

##### □ Casing

Like an internal attenuator. Acoustically lined with abrasive resistant 50 mm thick mineral fibreboard. Four quick release clamps permit easy access to the impeller set. Motor-impeller unit can swing-out, the swing-out range of the motor-impeller unit must be considered. Spigots on intake and exhaust twin-seal rubber gaskets fit standard ducts. All parts manufactured from galvanised sheet steel.

##### □ Impeller

With backward curved impeller. Inflow via inlet cone.

##### □ Motor

Energy saving, speed controllable EC-external rotor motors with highest efficiency, protection to IP 54. With ball bearings, maintenance-free and interference-free. Dynamically balanced for low noise operation.

##### □ Motor protection

Integrated electronic temperature monitoring for EC-motor and electronics.

##### □ Speed control

Stepless speed control with potentiometer or stepless speed control with universal control system (see table). Duties at different speeds are exemplarily given in the performance curve.

##### □ Electrical connection

Terminal box (IP 54) mounted on running cable (approx. 60 cm long).

##### □ Protection class

With a connected pipe system IP 54.

##### □ Installation

Installation in any position without restriction – horizontally, vertically or pitched – suitable for intake or extract. Mounting bracket included in delivery.

#### ■ Sound levels

Total sound power levels and the spectrum figures in dB(A) are given for:

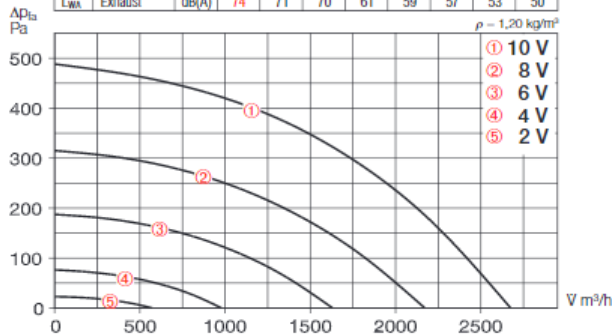
- Sound level case breakout
  - Sound level intake
  - Sound level exhaust
- In the table below as well as underneath the performance curve you can find additionally the sound pressure level at 1 m (free field conditions).

Type	Ref. no.	Connection Ø	Air flow volume (FID)	R.P.M.	Sound press. case breakout	Motor power	Current	Wiring diagram	max. air flow temperature	Weight net approx.	Universal control system		Speed-potentiometer flush		Speed-potentiometer surface	
											Type	Ref. no.	Type	Ref. no.	Type	Ref. no.
<b>Type SilentBox® SB EC, 1 ph. motor 230 V, 50/60 Hz, EC motor, IP 54</b>																
SB EC 355	6139	355	2670	1650	51	0.32	1.40	1066	60	37.0	EUR EC <sup>1)2)</sup>	1347	PU 10 <sup>1)</sup>	1734	PA 10 <sup>1)</sup>	1735

<sup>1)</sup> Several EC fans can normally be connected. <sup>2)</sup> alternative electronic differential pressure/temp. controller (EDR/ETR, No. 1437/1438) or three step speed controller (SU/SA, No. 4266/4267), see accessories.

### SB EC 355

Frequency	Hz	Total	125	250	500	1k	2k	4k	8k
L <sub>WA</sub> Case breakout	dB(A)	59	52	58	44	38	37	36	32
L <sub>WA</sub> Intake	dB(A)	70	68	63	49	44	46	41	41
L <sub>WA</sub> Exhaust	dB(A)	74	71	70	61	59	57	53	50



Free discharge						
Voltage V	n min <sup>-1</sup>	V m <sup>3</sup> /h	P W	I A	Lp dB(A)	SFP kW/m <sup>3</sup> /s
10	1650	2670	280	1,26	51	0,38
8	1320	2170	150	0,66	47	0,25
6	1000	1630	70	0,31	41	0,15
4	600	980	20	0,12	30	0,07

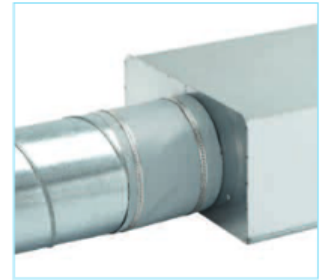
### Accessory details Page

Filters, heater batteries and attenuators	421 on
Temperature control systems for heater batteries	427, 431 on
Flexible ventilation ducting, Grilles, adaptors, roof terminations	487 on
Valves	508 on
Universal control system, electronic controller, speed-potentiometer	539 on

### Accessories

#### Flexible sleeve

**Type FM 355** Ref. no. 1675  
Supplied with two hose clips as standard; for installation between fan and duct system. Prevents sound and vibration transmission to ducting and corrects small site misalignments. For intake or extract two sleeves are needed for complete isolation.



#### Gravity shutter

**Type VK 355** Ref. no. 0761  
Automatic made from polymer, light grey.



#### Fixed grille

**Type RAG 355** Ref. no. 0753  
For covering air inlets and outlets on facades. Made from polymer, light grey.



#### Backdraught shutter

**Type RSK 355** Ref. no. 5650  
Automatic, made from metal.



#### Flexible circular attenuator

**Type FSD 355** Ref. no. 0682  
Spigotted aluminium attenuator with 50 mm insulation. Length 1 m.



#### Air filter box

**LFBR 355 G4** Ref. no. 8583  
**LFBR 355 F7** Ref. no. 8536  
Air filter with large surface area and capacity for installation in ducting. Connections with double lip seals, adapted to standard  $\varnothing$ .



#### Electric heater battery

**EHR-R 355** 9,0 kW No. 8656  
– with integrated temp. control  
**EHR-R 9/355 TR** 9,0 kW No. 5297  
Room or duct sensor (TFK/TFR, accessories) required.



**Temperature control system for electric heater battery EHR-R**  
**Type EHSD 16** Ref. no. 5003

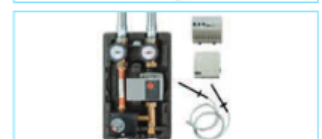


#### Warm water heater battery

**Type WHR 355** Ref. no. 8790  
Compact heat exchanger for in-line installation.



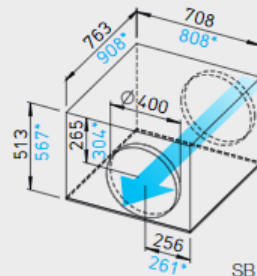
**Temperature control system for warm water heater battery**  
**Type WHS HE** Ref. no. 8319



### SilentBox® SB EC



Virtually noise-free with high air flow volumes against high resistances. Ideal for maintenance and cleaning.



Dim. in mm

SB EC 400 A, \*SB EC 400 B

#### ■ Specification

##### □ Casing

Like an internal attenuator. Acoustically lined with abrasive resistant 50 mm thick mineral fibreboard. Four quick release clamps permit easy access to the impeller set. Motor-impeller unit can swing-out, the swing-out range of the motor-impeller unit must be considered. Spigots on intake and exhaust twin-seal rubber gaskets fit standard ducts. All parts manufactured from galvanised sheet steel.

##### □ Impeller

With backward curved impeller. Inflow via inlet cone.

##### □ Motor

Energy saving, speed controllable EC-external rotor motors with highest efficiency, protection to IP 54. With ball bearings, maintenance-free and interference-free. Dynamically balanced for low noise operation.

##### □ Motor protection

Integrated electronic temperature monitoring for EC-motor and electronics.

##### □ Speed control

Stepless speed control with potentiometer or stepless speed control with universal control system (see table). Duties at different speeds are exemplarily given in the performance curve.

##### □ Electrical connection

Terminal box (IP 54) mounted on running cable (approx. 60 cm long).

##### □ Protection class

With a connected pipe system IP 54.

##### □ Installation

Installation in any position without restriction – horizontally, vertically or pitched – suitable for intake or extract. Mounting bracket included in delivery.

#### ■ Sound levels

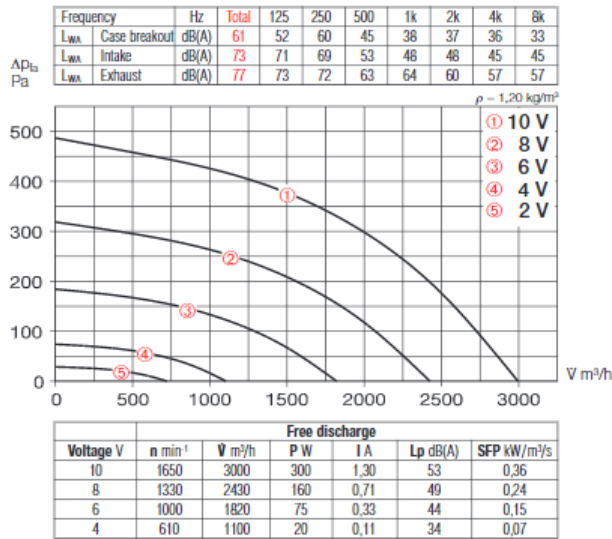
Total sound power levels and the spectrum figures in dB(A) are given for:

- Sound level case breakout
  - Sound level intake
  - Sound level exhaust
- In the table below as well as underneath the performance curve you can find additionally the sound pressure level at 1 m (free field conditions).

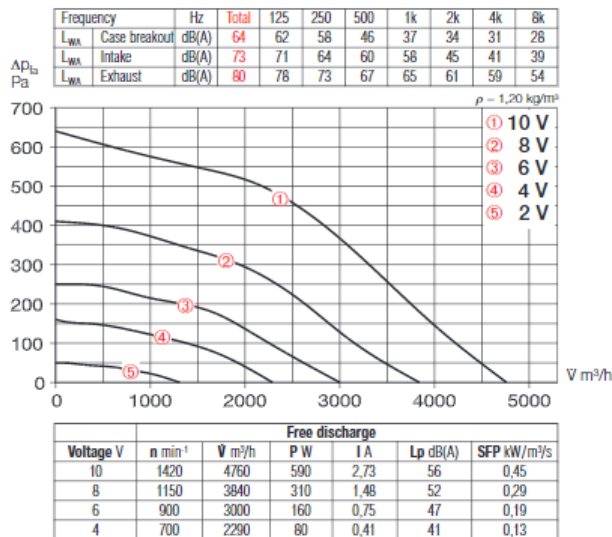
Type	Ref. no.	Connection Ø	Air flow volume (FD)	R.P.M.	Sound press. case breakout	Motor power	Current	Wiring diagram	max. air flow temperature	Weight net approx.	Universal control system		Speed-potentiometer flush		Speed-potentiometer surface	
											Type	Ref. no.	Type	Ref. no.	Type	Ref. no.
<b>Type SilentBox® SB EC, 1 ph. motor, 230 V, 50/60 Hz, EC motor, IP 54</b>																
SB EC 400 A	6140	400	3000	1650	53	0.34	1.50	1066	60	45.0	EUR EC <sup>1)2)</sup>	1347	PU 10 <sup>1)</sup>	1734	PA 10 <sup>1)</sup>	1735
SB EC 400 B	9629	400	4760	1420	56	0.65	2.98	982	60	60.8	EUR EC <sup>1)2)</sup>	1347	PU 10 <sup>1)</sup>	1734	PA 10 <sup>1)</sup>	1735

<sup>1)</sup> Several EC fans can normally be connected. <sup>2)</sup> alternative electronic differential pressure/temp. controller (EDR/ETR, No. 1437/1438) or three step speed controller (SU/SA, No. 4266/4267), see accessories.

### SB EC 400 A



### SB EC 400 B



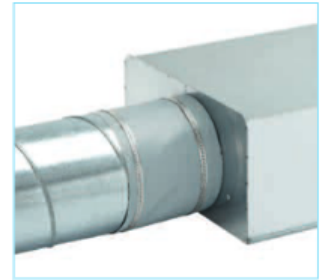
#### Accessory details Page

Filters, heater batteries and attenuators	421 on
Temperature control systems for heater batteries	427, 431 on
Flexible ventilation ducting, Grilles, adaptors, roof terminations	487 on
Valves	508 on
Universal control system, electronic controller, speed-potentiometer	539 on

#### Accessories

##### Flexible sleeve

**Type FM 400** Ref. no. 1676  
Supplied with two hose clips as standard; for installation between fan and duct system. Prevents sound and vibration transmission to ducting and corrects small site misalignments. For intake or extract two sleeves are needed for complete isolation.



##### Gravity shutter

**Type VK 400** Ref. no. 0762  
Automatic made from polymer, light grey.



##### Fixed grille

**Type RAG 400** Ref. no. 0754  
For covering air inlets and outlets on facades. Made from polymer, light grey.



##### Backdraught shutter

**Type RSK 400** Ref. no. 5651  
Automatic, made from metal.



##### Flexible circular attenuator

**Type FSD 400** Ref. no. 0683  
Spigotted aluminium attenuator with 50 mm insulation. Length 1 m.



##### Air filter box

**LFBR 400 G4** Ref. no. 8582  
**LFBR 400 F7** Ref. no. 8537  
Air filter with large surface area and capacity for installation in ducting. Connections with double lip seals, adapted to standard Ø.



##### Electric heater battery

**EHR-R 9/400** 9,0 kW No. 8657  
– with integrated temp. control  
**EHR-R 9/400 TR** 9,0 kW No. 5299  
Room or duct sensor (TFK/TFR, accessories) required.



##### Temperature control system

for electric heater battery EHR-R  
**Type EHSD 16** Ref. no. 5003



##### Warm water heater battery

**Type WHR 400** Ref. no. 9524  
Compact heat exchanger for in-line installation.



##### Temperature control system for warm water heater battery

**Type WHS HE** Ref. no. 8319





**SilentBox® SB**

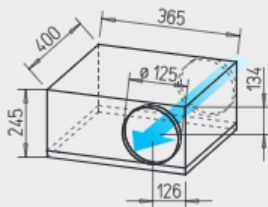


Virtually noise-free with high air flow volumes against high resistances. Ideal for maintenance and cleaning.



Efficiency class

**F**



Dim. in mm

■ **Similarities SB and SVS**

□ **Installation**

Installation in any position without restriction – horizontally, vertically or pitched – suitable for intake or extract (Exception: SVS must not be installed with the swing-out motor-impeller unit facing upward).

□ **Motor**

Totally enclosed external rotor motor with ball bearings, impregnated windings insulation class F, designed for continuous operation, maintenance free and interference-free.

■ **Specification SilentBox®**

□ **Casing**

Like an internal attenuator. Acoustically lined with abrasive resistant 50 mm thick mineral fibreboard. Four quick release clamps permit easy access to motor scroll and impeller set.

Swing out motor and impeller. Spigots on intake and exhaust twin-seal rubber gaskets fit standard ducts. All parts manufactured from galvanised sheet steel.

□ **Impeller**

Low noise forward curved centrifugal impeller, housed within an aerodynamically shaped scroll from galvanised steel. Bell mouth shaped inlet ring to achieve optimum air flow.

□ **Electrical connection**

Terminal box (IP 54) is supplied with a 60 cm long electric cable.

□ **Motor protection**

With thermal contacts wired in series with the windings. To reset the thermal contacts the main supply must be switched off and on.

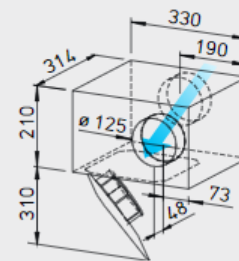
□ **Speed control**

Stepless 0 – 100 % using electronic controller or 5 step transformer controller (see table).

**SlimVent SVS**



Ultra low profile. Ideal for applications with limited installation space. With sound-insulating mineral wool lining for particularly noise-free operation.



Dim. in mm

□ **Protection class**

IP 44

■ **Specification SlimVent SVS**

□ **Casing**

Extremely flat casing in longer design with more than 50 mm thick sound-absorbing mineral wool lining and glass fibre surface. The acoustic box which is placed in front of the fan reduces the sound level for the intake significantly. The sound pressure level is reduced to a smaller extent (see sound levels in the tables above the performance curves).

□ The swing out motor and impeller unit permits maintenance and cleaning without disassembly of system components. The swing-out range must be considered for the inspection flap.

□ **Impeller**

Energy-saving centrifugal impeller with backward curved blades from high quality polymer. Dynamically balanced for low noise operation.

□ **Electrical connection**

Terminal box (IP 54) mounted on running cable.

□ **Motor protection**

With thermal contacts wired in series with the windings which automatically reset after cooling.

□ **Speed control**

Stepless 0 – 100 % by use of electronic controller or 5 step transformer controller (see table) or 2 speed operation with DS 2/2 (accessories).

**Type DS 2/2** Ref. no. 1267

□ **Protection class**

When installed in ducting the fan is rated IP 44.

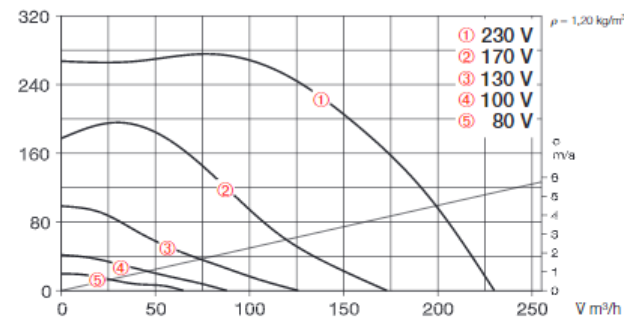
Type	Ref. no.	Air flow volume (FID)	R.P.M.	Sound press. case breakout	Motor power	Current		Wiring diagram	max. air flow temp.		Weight net approx.	Transformer-speed controller 5-step		Electronic* speed controller, stepless flush / surface	
		V m³/h	min⁻¹	db(A) in 1 m	W	full load	control		No.	+°C		+°C	kg	Type	Ref. no.
<b>Type SilentBox® SB, 1 ph. motor, 230 V, 50 Hz, capacitor motor, IP 44</b>															
SB 125 A	9506	230	1130	28	61	0.27	0.27	508	80	80	12.0	TSW 0,3	3608	ESU 1 / ESA 1	0236 / 0238
SB 125 C	9562	440	1850	37	122	0.53	0.53	508	65	65	12.0	TSW 1,5	1495	ESU 1 / ESA 1	0236 / 0238
<b>Type SVS, 1 ph. motor, 230 V, 50 Hz, capacitor motor, IP 33</b>															
SVS 125 B	0130	400/270 <sup>1)</sup>	2570/1710 <sup>1)</sup>	45/36 <sup>1)</sup>	61/45 <sup>1)</sup>	0.27/0.20 <sup>1)</sup>	0.26 <sup>1)</sup>	934.1	60	60	5.9	TSW 1,5	1495	ESU 1 / ESA 1	0236 / 0238

<sup>1)</sup> Values refer to the two speed stages (see characteristic curve).

\* In noise relevant cases, transformer controllers must be provided. An electronic controller can trigger a distracting magnetisation noise.

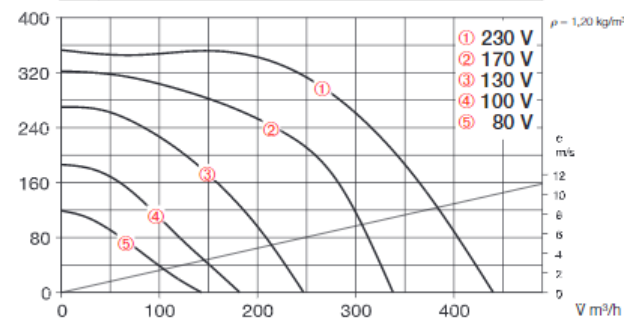
### SB 125 A

Frequency	Hz	Total	125	250	500	1k	2k	4k	8k
$L_{WA}$ Case breakout		35	26	28	27	27	25	26	27
$L_{WA}$ Intake		53	51	48	43	38	33	29	17
$L_{WA}$ Exhaust		61	53	54	55	56	50	43	30



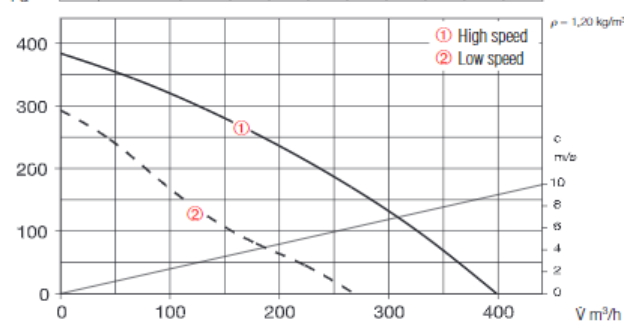
### SB 125 C

Frequency	Hz	Total	125	250	500	1k	2k	4k	8k
$L_{WA}$ Case breakout		44	35	42	36	33	29	28	28
$L_{WA}$ Intake		62	59	57	54	46	44	40	30
$L_{WA}$ Exhaust		70	62	63	65	64	62	55	46



### SVS 125 B

Frequency	Hz	Total	125	250	500	1k	2k	4k	8k
$L_{WA}$ Case breakout		54	38	48	51	43	39	33	30
$L_{WA}$ Intake		63	58	60	53	44	44	43	36
$L_{WA}$ Exhaust		72	61	65	68	64	61	57	49



#### Sound levels

Total sound power levels and the spectrum figures in dB(A) are given for

- Sound level case breakout
- Sound level intake/exhaust

The type table also shows

- Sound pressure case breakout and intake air noise specified as sound pressure in 1 m (free field conditions).

For the SB types, it should be noted that the intake sound level is less than the exhaust sound level.

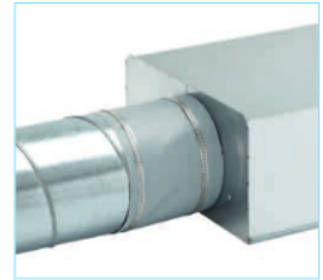
#### Accessory details Page

Filters, heater batteries and attenuators	421 on
Temperature control systems for heater batteries	427, 431 on
Flexible ventilation ducting, Grilles, adaptors, roof terminations	487 on
Valves	508 on
Speed controllers, switches	525 on

#### Accessories

##### Flexible sleeve

**Type FM 125** Ref. no. 1682  
Supplied with two hose clips as standard; for installation between fan and duct system. Prevents sound and vibration transmission to ducting and corrects small site misalignments. For intake or extract two sleeves are needed for complete isolation.



##### Gravity shutter

**Type VK 125** Ref. no. 0857  
Automatic made from polymer, white.



##### Fixed grille

**Type G 160** Ref. no. 0893  
Made from polymer, white.



##### Guard

**Type SGR 125** Ref. no. 5064  
For intake and extract installation. Made from powder-coated steel wire.



##### Backdraught shutter

**Type RSKK 125** Ref. no. 5107  
Automatic, made from polymer.



##### Flexible circular attenuator

**Type FSD 125** Ref. no. 0677  
Spigotted aluminium attenuator with 50 mm insulation. Length 1 m.



##### Air filter box

**LFBR 125 G4** Ref. no. 8577  
**LFBR 125 F7** Ref. no. 8531  
Air filter with large surface area for installation in ducting.



##### Electric heater battery

**EHR-R 0,8/125** 0,8 kW No. 8709  
**EHR-R 1,2/125** 1,2 kW No. 9433  
– with integrated temp. control  
**EHR-R 0,8/125 TR 0,8 kW** No. 5293  
Room or duct sensor (TFK/TFR, accessories) required.



**Temperature control system for electric heater battery EHR-R**  
**Type EHS** Ref. no. 5002



**Warm water heater battery**  
**Type WHR 125** Ref. no. 9480  
Compact heat exchanger for in-line installation.



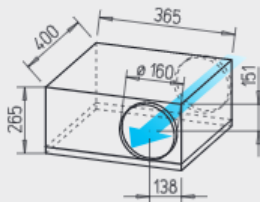
**Temperature control system for warm water heater battery**  
**Type WHST 300 T38** No. 8817



**SilentBox® SB**



Virtually noise-free with high air flow volumes against high resistances. Ideal for maintenance and cleaning.

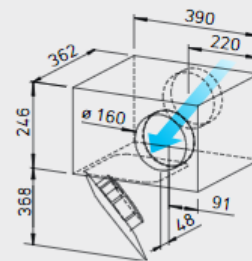


Dim. in mm

**SlimVent SVS**



Ultra low profile. Ideal for applications with limited installation space. With sound-insulating mineral wool lining for particularly noise-free operation.



Dim. in mm

■ **Similarities SB and SVS**

□ **Installation**

Installation in any position without restriction – horizontally, vertically or pitched – suitable for intake or extract (Exception: SVS must not be installed with the swing-out motor-impeller unit facing upward).

□ **Motor**

Totally enclosed external rotor motor with ball bearings, impregnated windings insulation class F, designed for continuous operation, maintenance free and interference-free.

□ **Sound levels** See page 359.

■ **Specification SilentBox®**

□ **Casing**

Like an internal attenuator. Acoustically lined with abrasive resistant 50 mm thick mineral fibreboard. Four quick release clamps permit easy access to

motor scroll and impeller set. Swing out motor and impeller. Spigots on intake and exhaust twin-seal rubber gaskets fit standard ducts. All parts manufactured from galvanised sheet steel.

□ **Impeller**

Low noise forward curved centrifugal impeller, housed within an aerodynamically shaped scroll from galvanised steel. Bell mouth shaped inlet ring to achieve optimum air flow.

□ **Electrical connection**

Terminal box (IP 54) is supplied with a 60 cm long electric cable.

□ **Motor protection**

With thermal contacts wired in series with the windings. To reset the thermal contacts the main supply must be switched off and on.

□ **Speed control**

Stepless 0 – 100 % using electronic controller or 5 step transformer controller (see table).

□ **Protection class**

IP 44

■ **Specification SlimVent SVS**

□ **Casing**

Extremely flat casing in longer design with more than 50 mm thick sound-absorbing mineral wool lining and glass fibre surface. The acoustic box which is placed in front of the fan reduces the sound level for the intake significantly. The sound pressure level is reduced to a smaller extent (see sound levels in the tables above the performance curves).

□ The swing out motor and impeller unit permits maintenance and cleaning without disassembly of system components. The

swing-out range must be considered for the inspection flap.

□ **Impeller**

Energy-saving centrifugal impeller with backward curved blades from high quality polymer. Dynamically balanced for low noise operation.

□ **Electrical connection**

Terminal box (IP 54) mounted on running cable.

□ **Motor protection**

With thermal contacts wired in series with the windings which automatically reset after cooling.

□ **Speed control**

Stepless 0 – 100 % by use of electronic controller or 5 step transformer controller (see table) or 2 speed operation with DS 2/2 (accessories).

**Type DS 2/2** Ref. no. 1267

□ **Protection class**

When installed in ducting the fan is rated IP 44.

Type	Ref. no.	Air flow volume (FID)	R.P.M.	Sound press. case breakout	Motor power	Current		Wiring diagram	max. air flow temp.		Weight net approx.	Transformer-speed controller 5-step		Electronic* speed controller, stepless flush / surface	
						full load	control		full load	control		Type	Ref. no.	Type	Ref. no.
		V m³/h	min <sup>-1</sup>	db(A) in 1 m	W	A	A	No.	+°C	+°C	kg	Type	Ref. no.	Type	Ref. no.
<b>Type SilentBox® SB, 1 ph. motor, 230 V, 50 Hz, capacitor motor, IP 44 (B), IP 33 (D)</b>															
SB 160 B	9508	360	1650	36	105	0.46	0.46	508	65	65	13.0	TSW 1,5	1495	ESU 1 / ESA 1	0236 / 0238
SB 160 D	9563	580	2220	43	164	0.72	0.72	508	60	60	10.3	TSW 1,5	1495	ESU 1 / ESA 1	0236 / 0238
<b>Type SVS, 1 ph. motor, 230 V, 50 Hz, capacitor motor, IP 33</b>															
SVS 160 K	0131	440/300 <sup>1)</sup>	2560/1730 <sup>1)</sup>	44/35 <sup>1)</sup>	61/45 <sup>1)</sup>	0.26/0.20 <sup>1)</sup>	0.26 <sup>1)</sup>	934.1	60	60	7.6	TSW 1,5	1495	ESU 1 / ESA 1	0236 / 0238
SVS 160 L	2653	670/390 <sup>1)</sup>	2520/1530 <sup>1)</sup>	50/39 <sup>1)</sup>	108/69 <sup>1)</sup>	0.47/0.30 <sup>1)</sup>	0.45 <sup>1)</sup>	934.1	60	60	7.8	TSW 1,5	1495	ESU 1 / ESA 1	0236 / 0238

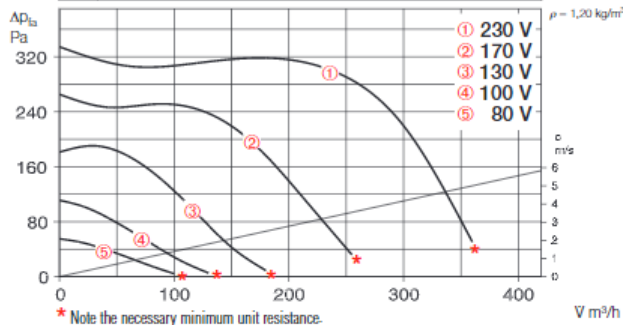
<sup>1)</sup> Values refer to the two speed stages (see characteristic curve).

\* In noise relevant cases, transformer controllers must be provided. An electronic controller can trigger a distracting magnetisation noise.



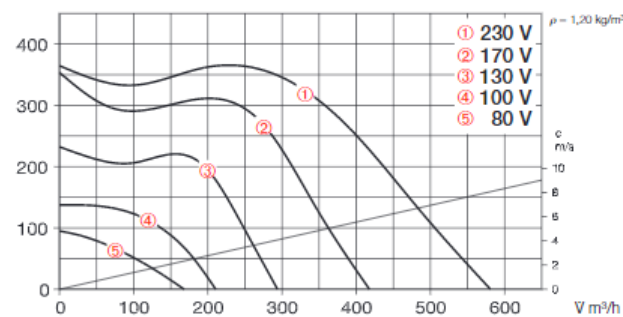
### SB 160 B

Frequency	Hz	Total	125	250	500	1k	2k	4k	8k
$L_{WA}$ Case breakout		43	40	39	34	28	27	27	
$L_{WA}$ Intake		61	59	56	50	44	39	35	26
$L_{WA}$ Exhaust		68	61	61	62	61	58	53	44



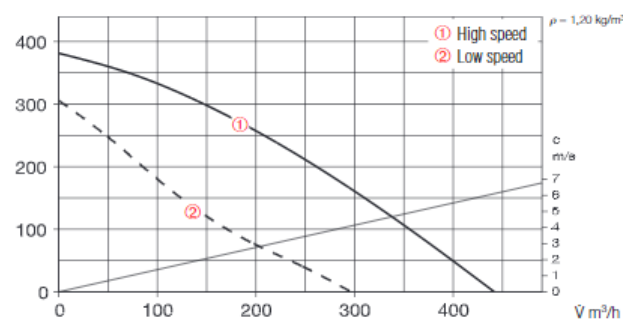
### SB 160 D

Frequency	Hz	Total	125	250	500	1k	2k	4k	8k
$L_{WA}$ Case breakout		50	47	44	41	34	32	30	28
$L_{WA}$ Intake		67	65	60	53	44	48	46	45
$L_{WA}$ Exhaust		79	68	71	72	69	71	69	69



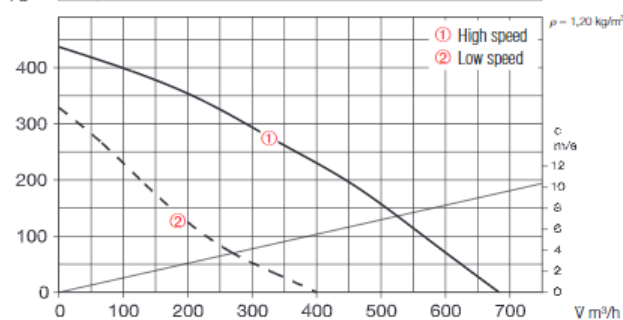
### SVS 160 K

Frequency	Hz	Total	125	250	500	1k	2k	4k	8k
$L_{WA}$ Case breakout		52	38	47	50	40	37	32	31
$L_{WA}$ Intake		63	58	61	50	40	45	44	38
$L_{WA}$ Exhaust		70	60	66	65	59	56	56	48



### SVS 160 L

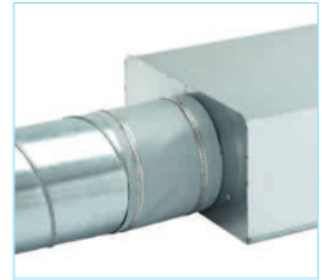
Frequency	Hz	Total	125	250	500	1k	2k	4k	8k
$L_{WA}$ Case breakout		58	40	53	55	46	44	38	31
$L_{WA}$ Intake		66	60	64	58	50	47	48	35
$L_{WA}$ Exhaust		75	62	67	73	66	63	63	51



### Accessories

#### Flexible sleeve

**Type FM 160** Ref. no. 1684  
Supplied with two hose clips as standard; for installation between fan and duct system. Prevents sound and vibration transmission to ducting and corrects small site misalignments. For intake or extract two sleeves are needed for complete isolation.



#### Gravity shutter

**Type VK 160** Ref. no. 0892  
Automatic made from polymer, white.



#### Fixed grille

**Type G 160** Ref. no. 0893  
Made from polymer, white.



#### Guard

**Type SGR 160** Ref. no. 5069  
For intake and extract installation. Made from galvanised steel.



#### Backdraught shutter

**Type RSK 160** Ref. no. 5669  
Automatic, made from metal.



#### Flexible circular attenuator

**Type FSD 160** Ref. no. 0678  
Spigotted aluminium attenuator with 50 mm insulation. Length 1 m.



#### Air filter box

**LFBR 160 G4** Ref. no. 8578  
**LFBR 160 F7** Ref. no. 8532  
Air filter with large surface area for installation in ducting.



#### Electric heater battery

**EHR-R 1,2/160** 1,2 kW No. 9434  
**EHR-R 2,4/160** 2,4 kW No. 9435  
**EHR-R 5/160** 5,0 kW No. 8710  
- with integrated temp. control  
**EHR-R 2,4/160 TR** 2,4 kW No. 5294  
Room or duct sensor (TFK/TFR, accessories) required.



**Temperature control system for electric heater battery EHR-R**  
**Type EHS** Ref. no. 5002



#### Warm water heater battery

**Type WHR 160** Ref. no. 9481  
Compact heat exchanger for in-line installation.



**Temperature control system for warm water heater battery**  
**Type WHST 300 T38** No. 8817

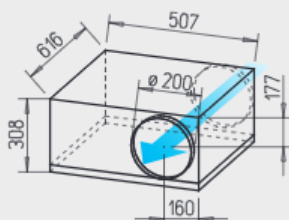




**SilentBox® SB**



Virtually noise-free with high air flow volumes against high resistances. Ideal for maintenance and cleaning.



Dim. in mm

■ **Similarities SB and SVS**

□ **Installation**

Installation in any position without restriction – horizontally, vertically or pitched – suitable for intake or extract (Exception: SVS must not be installed with the swing-out motor-impeller unit facing upward).

□ **Motor**

Totally enclosed external rotor motor with ball bearings, impregnated windings insulation class F, designed for continuous operation, maintenance free and interference-free.

■ **Specification SilentBox®**

□ **Casing**

Like an internal attenuator. Acoustically lined with abrasive resistant 50 mm thick mineral fibreboard. Four quick release clamps permit easy access to motor scroll and impeller set. Swing out motor and impeller.

Spigots on intake and exhaust twin-seal rubber gaskets fit standard ducts. All parts manufactured from galvanised sheet steel.

□ **Impeller**

With backward curved high-quality polymer blades. Inflow via inlet cone.

□ **Electrical connection**

Terminal box (IP 54) is supplied with a 60 cm long electric cable.

□ **Motor protection**

With thermal contacts wired in series with the windings. To reset the thermal contacts the main supply must be switched off and on.

□ **Speed control**

Stepless 0 – 100 % using electronic controller or 5 step transformer controller (see table).

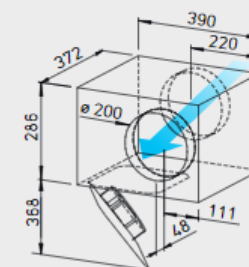
□ **Protection class**

IP 44

**SlimVent SVS**



**Ultra low profile. Ideal for applications with limited installation space.** With sound-insulating mineral wool lining for particularly noise-free operation.



Dim. in mm

■ **Specification SlimVent SVS**

□ **Casing**

Extremely flat casing in longer design with more than 50 mm thick sound-absorbing mineral wool lining and glass fibre surface. The acoustic box which is placed in front of the fan reduces the sound level for the intake significantly. The sound pressure level is reduced to a smaller extent (see sound levels in the tables above the performance curves).

□ The swing out motor and impeller unit permits maintenance and cleaning without disassembly of system components. The swing-out range must be considered for the inspection flap.

□ **Impeller**

Energy-saving centrifugal impeller with backward curved blades from high quality polymer. Dynamically balanced for low noise operation.

□ **Electrical connection**

Terminal box (IP 54) mounted on running cable.

□ **Motor protection**

With thermal contacts wired in series with the windings which automatically reset after cooling.

□ **Speed control**

Stepless 0 – 100 % by use of electronic controller or 5 step transformer controller (see table).

□ **Protection class**

When installed in ducting the fan is rated IP 44.

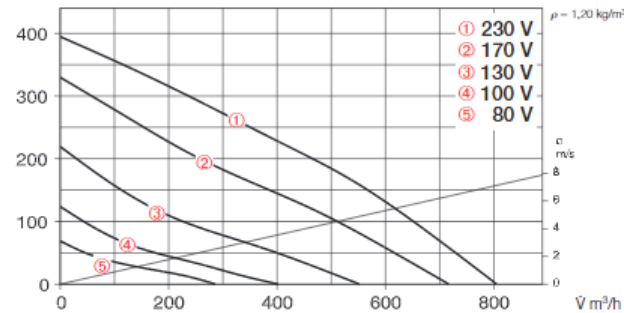
Information		Page
Techn. description		296
Selection chart		297
Information for planning	10 on	
Modular system		294

Type	Ref. no.	Air flow volume (FID)	R.P.M.	Sound press. case breakout	Motor power	Current		Wiring diagram	max. air flow temp.		Weight net approx.	Transformer-speed controller 5-step		Electronic* speed controller, stepless flush / surface	
						full load	control		full load	control		Type	Ref. no.	Type	Ref. no.
		$\dot{V}$ m <sup>3</sup> /h	min <sup>-1</sup>	dB(A) in 1 m	W	A	A	No.	+°C	+°C	kg	Type	Ref. no.	Type	Ref. no.
<b>Type SilentBox® SB, 1 ph. motor, 230 V, 50 Hz, capacitor motor, IP 33</b>															
SB 200 C	9510	810	2520	44	105	0.46	0.46	508	70	70	19.0	TSW 1,5	1495	ESU 1 / ESA 1	0236 / 0238
SB 200 D	9564	1030	2700	48	160	0.69	0.83	508	70	50	19.7	TSW 1,5	1495	ESU 1 / ESA 1	0236 / 0238
<b>Type SVS, 1 ph. motor, 230 V, 50 Hz, capacitor motor, IP 33</b>															
SVS 200 K	0132	940	2710	55	163	0.71	0.83	508	70	50	9.2	TSW 1,5	1495	ESU 1 / ESA 1	0236 / 0238

\* In noise relevant cases, transformer controllers must be provided. An electronic controller can trigger a distracting magnetisation noise.

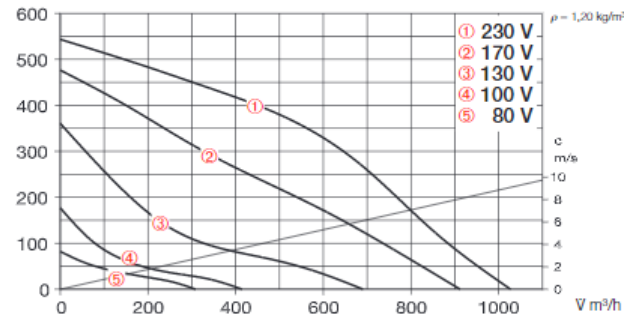
### SB 200 C

Frequency	Hz	Total	125	250	500	1k	2k	4k	8k
$L_{WA}$ Case breakout	dB(A)	51	37	51	40	36	36	29	28
$L_{WA}$ Intake	dB(A)	62	58	58	49	42	41	38	33
$L_{WA}$ Exhaust	dB(A)	69	59	65	61	57	60	56	49



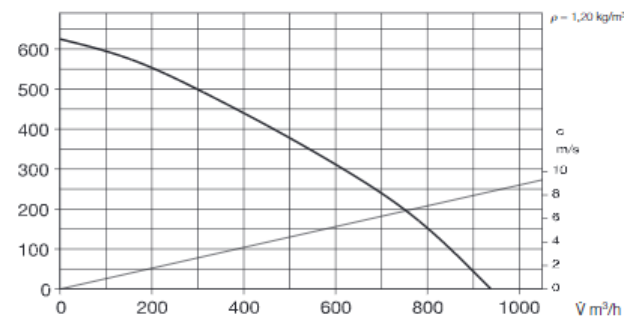
### SB 200 D

Frequency	Hz	Total	125	250	500	1k	2k	4k	8k
$L_{WA}$ Case breakout	dB(A)	55	42	53	48	40	37	32	29
$L_{WA}$ Intake	dB(A)	65	60	62	57	48	41	40	39
$L_{WA}$ Exhaust	dB(A)	73	62	68	66	63	62	58	60



### SVS 200 K

Frequency	Hz	Total	125	250	500	1k	2k	4k	8k
$L_{WA}$ Case breakout	dB(A)	63	45	55	61	50	45	38	35
$L_{WA}$ Intake	dB(A)	71	65	67	61	54	49	49	46
$L_{WA}$ Exhaust	dB(A)	81	67	74	78	72	70	66	61



#### Sound levels

Total sound power levels and the spectrum figures in dB(A) are given for

- Sound level case breakout
- Sound level intake/exhaust

The type table also shows

- Sound pressure case breakout and intake air noise specified as sound pressure in 1 m (free field conditions).

For the SB types, it should be noted that the intake sound level is less than the exhaust sound level.

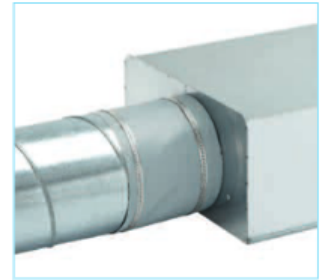
#### Accessory details Page

Filters, heater batteries and attenuators	421 on
Temperature control systems for heater batteries	427, 431 on
Flexible ventilation ducting, Grilles, adaptors, roof terminations	487 on
Valves	508 on
Speed controllers, switches	525 on

#### Accessories

##### Flexible sleeve

**Type FM 200** Ref. no. 1670  
Supplied with two hose clips as standard; for installation between fan and duct system. Prevents sound and vibration transmission to ducting and corrects small site misalignments. For intake or extract two sleeves are needed for complete isolation.



##### Gravity shutter

**Type VK 200** Ref. no. 0758  
Automatic made from polymer, light grey.



##### Fixed grille

**Type RAG 200** Ref. no. 0750  
For covering air inlets and outlets on facades. Made from polymer, light grey.



##### Guard

**Type SGR 200** Ref. no. 5066  
For intake and extract installation. Made from galvanised steel.



##### Backdraught shutter

**Type RSK 200** Ref. no. 5074  
Automatic, made from metal.



##### Flexible circular attenuator

**Type FSD 200** Ref. no. 0679  
Spigotted aluminium attenuator with 50 mm insulation. Length 1 m.



##### Air filter box

**LFBR 200 G4** Ref. no. 8579  
**LFBR 200 F7** Ref. no. 8533  
Air filter with large surface area for installation in ducting.



##### Electric heater battery

**EHR-R 1,2/200** 1,2 kW No. 9436  
**EHR-R 2/200** 2,0 kW No. 9437  
**EHR-R 5/200** 5,0 kW No. 8711  
– with integrated temp. control  
**EHR-R 5/200 TR** 5,0 kW No. 5295  
Room or duct sensor (TFK/TFR, accessories) required.



**Temperature control system for electric heater battery EHR-R**  
**Type EHS** Ref. no. 5002



##### Warm water heater battery

**Type WHR 200** Ref. no. 9482  
Compact heat exchanger for in-line installation.



**Temperature control system for warm water heater battery**  
**Type WHST 300 T38** No. 8817

