

Casing

Acoustically lined double skinned galvanised steel casing with 30 mm thick mineral fibre-board. Swing out motor and impeller unit, fixed with robust die-cast hinges. Intake and exhaust spigots with twin-seal rubber gasket. Condensation drain and drip protection with the door opened as standard. Easy installation with 2 sturdy mounting rails, manufactured from galvanised steel complete with anti vibration mounts.

Impeller

Backward curved, free-running high-performance centrifugal impeller made from aluminium, mounted directly to the motor shaft. High efficiency, low noise level. Dynamically balanced to DIN ISO 1940 Pt.1 – class 6.3.

Motor

Energy-saving, speed controllable EC-internal rotor motor with highest efficiency, out of the air stream, protection to IP 55. With ball bearings, maintenance-free and interference-free.

Electrical connection

Standard terminal box (IP 55) mounted on outside of motor, with a permanently attached cable for 1~ type.

Motor protection

Integrated electronic temperature monitoring for EC-motor and electronics. During exceedance of the maximum permitted temperatures an automatic reduction of speed is carried out for 3~ type which is reset to the original set value after cooling. For 1~ type, the motor is switched off when the maximum permitted temperature is exceeded.

Speed control

Stepless speed control with potentiometer or stepless speed control with universal control system (see table). Duties at different speeds are exemplarily given in the performance curve.

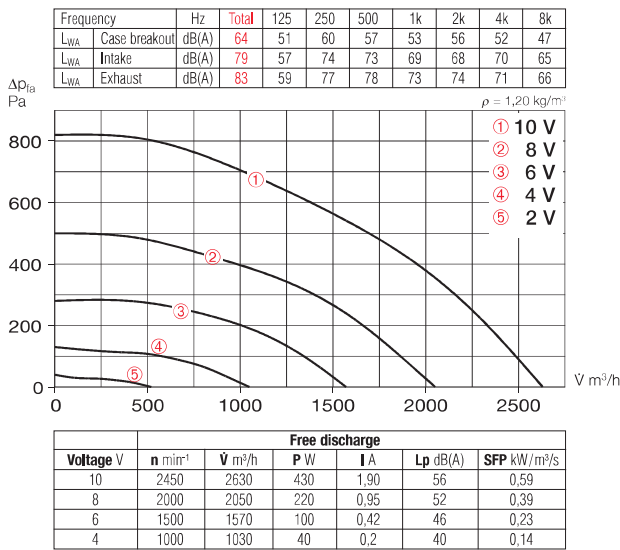
Sound levels

Total sound power levels and the spectrum figures in dB(A) are given for:
 – Sound level case breakout
 – Sound level intake
 – Sound level exhaust
 In the table below as well as underneath the performance curve you can find additionally the sound pressure level at 1 m (free field conditions).

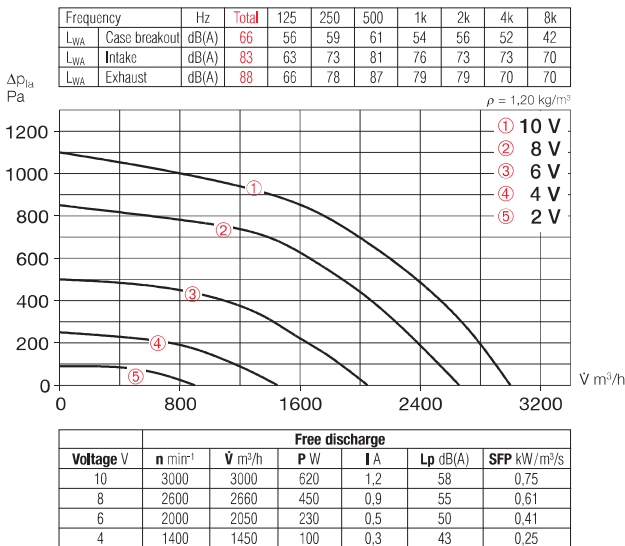
Type	Ref. no.	Connection Ø	Air flow volume (FID)	R.P.M.	Sound press. case breakout	Motor power	Current	Wiring diagram	max. air flow temperature	Weight net approx.	Universal control system		Speed-potentiometer surface			
											Type	Ref. no.	Type	Ref. no.	Type	Ref. no.
1 ph. motor, 1~, 230 V, 50/60 Hz, EC motor, protection to IP 55																
MBW EC 280	5850	280	2630	2450	56	0.48	2.10	985	100	33.0	EUR EC ¹⁾²⁾	1347	PU 10 ¹⁾	1734	PA 10 ¹⁾	1735
3 ph. motor 3~, 400 V, 50/60 Hz, EC motor, protection to IP 55																
MBD EC 280	5845	280	3000	3000	58	0.75	1.40	988	120	34.0	EUR EC ¹⁾²⁾	1347	PU 10 ¹⁾	1734	PA 10 ¹⁾	1735

¹⁾ several EC fans can normally be connected ²⁾ alternative electronic differential pressure/temp. controller (EDR/ETR, No. 1437/1438) or three-step speed controller (SU/SA, No. 4266/4267), see accessories

MBW EC 280



MBC EC 280



Accessories

Wall bracket

Bracket for wall installation, from galvanised sheet steel.

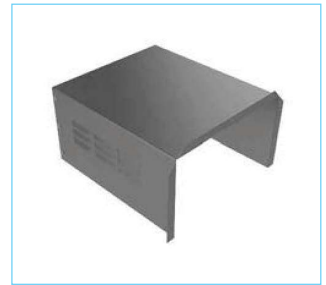
Type MB-WK EC280 No. 5527



Rain repellent roof

For protected outdoor installation. Made from galvanised sheet steel. Mounted above motor.

Type MB-WSD EC280 No. 1856



Flexible sleeve

Supplied with two hose clips as standard; for installation between fan and duct system. Prevents sound and vibration transmission to ducting and corrects small site misalignments.

– max. temperature +70 °C

Type FM 280 No. 1673

– max. temperature +120 °C

Type FM 280 T120 No. 1656



Universal control system

Type EUR EC Ref. no. 1347

For stepless control or regulation of single and three-phase EC fans with a setpoint input of 0–10V DC.



Speed-potentiometer

For direct control/setpoint specification for EC fans with potentiometer input.

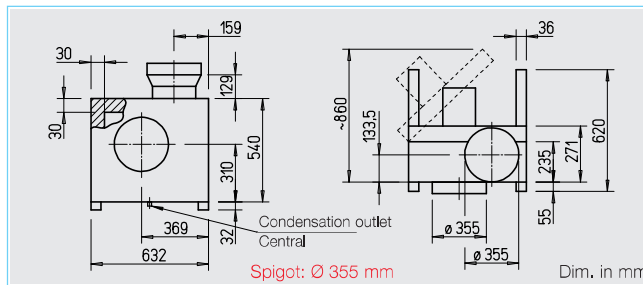
Type PU 10 Ref. no. 1734 for flush mounted installation.

Type PA 10 Ref. no. 1735 for surface mounted installation.



Accessory details Page

Universal control system, electronic controller, speed-potentiometer 539 on



Casing

Acoustically lined double skinned galvanised steel casing with 30 mm thick mineral fibre-board. Swing out motor and impeller unit, fixed with robust die-cast hinges. Intake and exhaust spigots with twin-seal rubber gasket. Condensation drain and drip protection with the door opened as standard. Easy installation with 2 sturdy mounting rails, manufactured from galvanised steel complete with anti vibration mounts.

Impeller

Backward curved, free-running high-performance centrifugal impeller made from aluminium, mounted directly to the motor shaft. High efficiency, low noise level. Dynamically balanced to DIN ISO 1940 Pt.1 – class 6.3.

Motor

Energy-saving, speed controllable EC-internal rotor motor with highest efficiency, out of the air stream, protection to IP 55. With ball bearings, maintenance-free and interference-free.

Electrical connection

Standard terminal box (IP 55) mounted on outside of motor, with a permanently attached cable for 1~ type.

Motor protection

Integrated electronic temperature monitoring for EC-motor and electronics. During exceedance of the maximum permitted temperatures an automatic reduction of speed is carried out for 3~ types which is reset to the original set value after cooling. For 1~ type, the motor is switched off when the maximum permitted temperature is exceeded.

Speed control

Stepless speed control with potentiometer or stepless speed control with universal control system (see table). Duties at different speeds are exemplarily given in the performance curve.

Sound levels

Total sound power levels and the spectrum figures in dB(A) are given for:

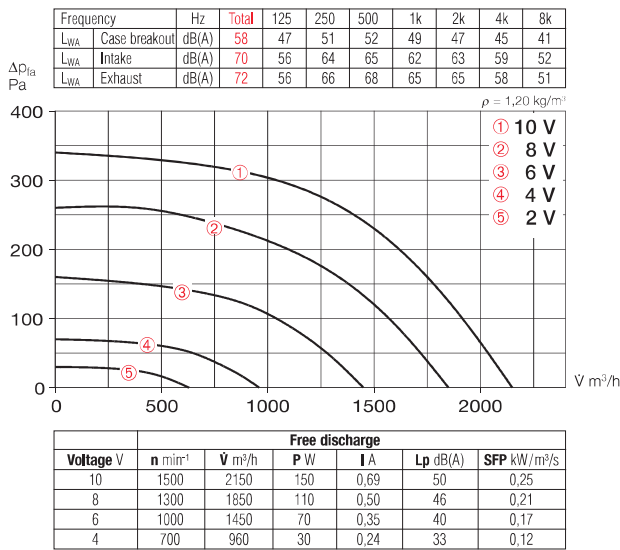
- Sound level case breakout
- Sound level intake
- Sound level exhaust

In the table below as well as underneath the performance curve you can find additionally the sound pressure level at 1 m (free field conditions).

Type	Ref. no.	Connection Ø	Air flow volume (FID)	R.P.M.	Sound press. case breakout	Motor power	Current	Wiring diagram	max. air flow temperature	Weight net approx.	Universal control system		Speed-potentiometer			
											Type	Ref. no.	Type	Ref. no.	Type	Ref. no.
1 ph. motor, 1~, 230 V, 50/60 Hz, EC motor, protection to IP 55																
MBW EC 315	5852	355	2150	1500	50	0.20	0.85	985	100	43.0	EUR EC ¹⁾²⁾	1347	PU 10 ¹⁾	1734	PA 10 ¹⁾	1735
3 ph. motor 3~, 400 V, 50/60 Hz, EC motor, protection to IP 55																
MBD EC 315 A	5851	355	3400	2400	59	0.72	1.30	988	120	44.0	EUR EC ¹⁾²⁾	1347	PU 10 ¹⁾	1734	PA 10 ¹⁾	1735
MBD EC 315 B	5846	355	4200	3000	65	1.38	2.20	988	120	50.0	EUR EC ¹⁾²⁾	1347	PU 10 ¹⁾	1734	PA 10 ¹⁾	1735

¹⁾ several EC fans can normally be connected ²⁾ alternative electronic differential pressure/temp. controller (EDR/ETR, No. 1437/1438) or three-step speed controller (SU/SA, No. 4266/4267), see accessories

MBW EC 315



Accessories

Wall bracket

Bracket for wall installation, from galvanised sheet steel.

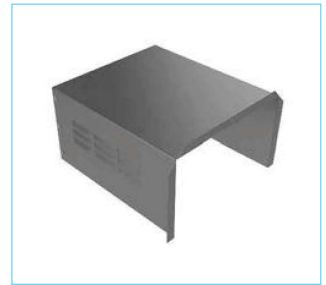
Type MB-WK EC315 No. 5527



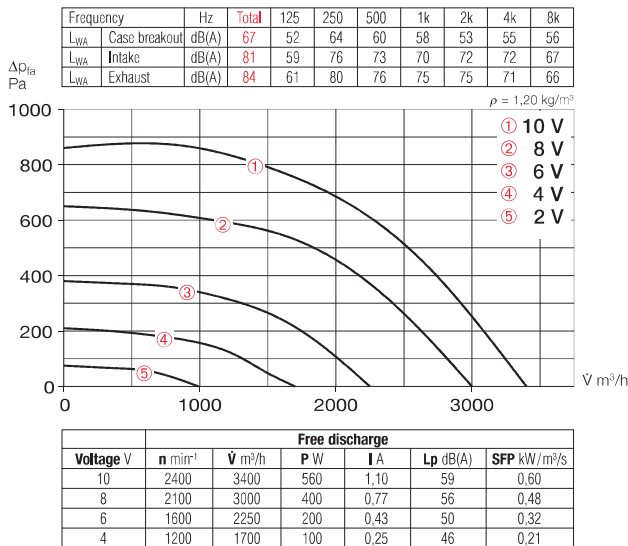
Rain repellent roof

For protected outdoor installation. Made from galvanised sheet steel. Mounted above motor.

Type MB-WSD EC315 No. 1865



MBD EC 315 A



Flexible sleeve

Supplied with two hose clips as standard; for installation between fan and duct system. Prevents sound and vibration transmission to ducting and corrects small site misalignments.

– max. temperature +70 °C

Type FM 355 No. 1675

– max. temperature +120 °C

Type FM 355 T120 No. 1658



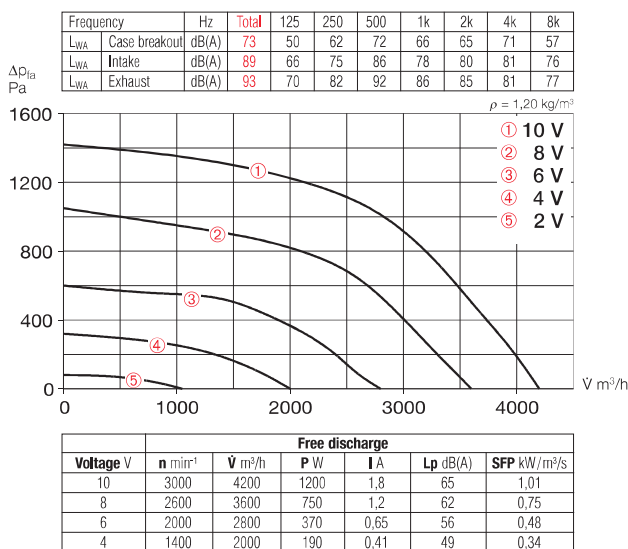
Universal control system

Type EUR EC Ref. no. 1347

For stepless control or regulation of single and three-phase EC fans with a setpoint input of 0–10V DC.



MBD EC 315 B



Speed-potentiometer

For direct control/setpoint specification for EC fans with potentiometer input.

Type PU 10 Ref. no. 1734

for flush mounted installation.

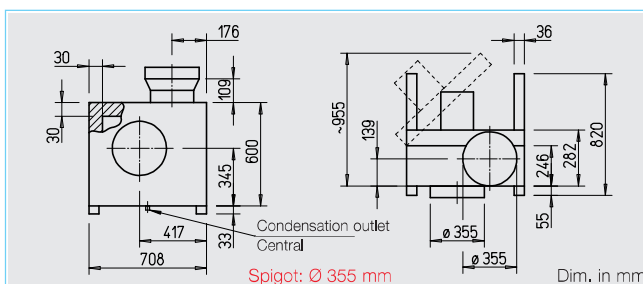
Type PA 10 Ref. no. 1735

for surface mounted installation.



Accessory details Page

Universal control system, electronic controller, speed-potentiometer 539 on



Casing

Acoustically lined double skinned galvanised steel casing with 30 mm thick mineral fibre-board. Swing out motor and impeller unit, fixed with robust die-cast hinges. Intake and exhaust spigots with twin-seal rubber gasket. Condensation drain and drip protection with the door opened as standard. Easy installation with 2 sturdy mounting rails, manufactured from galvanised steel complete with anti vibration mounts.

Impeller

Backward curved, free-running high-performance centrifugal impeller made from aluminium, mounted directly to the motor shaft. High efficiency, low noise level. Dynamically balanced to DIN ISO 1940 Pt.1 – grade 6.3.

Motor

Energy-saving, speed controllable EC-internal rotor motor with highest efficiency, out of the air stream, protection to IP 55. With ball bearings, maintenance-free and interference-free.

Electrical connection

Standard terminal box (IP 55) mounted on outside of motor, with a permanently attached cable for 1~ type.

Motor protection

Integrated electronic temperature monitoring for EC-motor and electronics. During exceedance of the maximum permitted temperatures an automatic reduction of speed is carried out for 3~ types which is reset to the original set value after cooling. For 1~ type, the motor is switched off when the maximum permitted temperature is exceeded.

Speed control

Stepless speed control with potentiometer or stepless speed control with universal control system (see table). Duties at different speeds are exemplarily given in the performance curve.

Sound levels

Total sound power levels and the spectrum figures in dB(A) are given for:

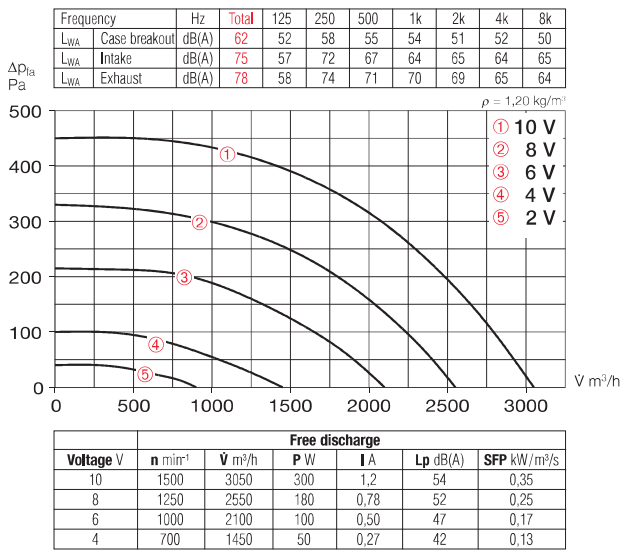
- Sound level case breakout
- Sound level intake
- Sound level exhaust

In the table below as well as underneath the performance curve you can find additionally the sound pressure level at 1 m (free field conditions).

Type	Ref. no.	Connection Ø	Air flow volume (FID)	R.P.M.	Sound press. case breakout	Motor power	Current	Wiring diagram	max. air flow temperature	Weight net approx.	Universal control system		Speed-potentiometer			
											Type	Ref. no.	Type	Ref. no.	Type	Ref. no.
1 ph. motor, 1~, 230 V, 50/60 Hz, EC motor, protection to IP 55																
MBW EC 355	5854	355	3050	1500	54	0.33	1.50	985	100	50.0	EUR EC ¹⁾²⁾	1347	PU 10 ¹⁾	1734	PA 10 ¹⁾	1735
3 ph. motor 3~, 400 V, 50/60 Hz, EC motor, protection to IP 55																
MBD EC 355 A	5853	355	5000	2500	66	1.45	2.20	988	120	56.0	EUR EC ¹⁾²⁾	1347	PU 10 ¹⁾	1734	PA 10 ¹⁾	1735
MBD EC 355 B	5847	355	5600	2800	68	1.90	3.10	988	120	63.0	EUR EC ¹⁾²⁾	1347	PU 10 ¹⁾	1734	PA 10 ¹⁾	1735

¹⁾ several EC fans can normally be connected ²⁾ alternative electronic differential pressure/temp. controller (EDR/ETR, No. 1437/1438) or three-step speed controller (SU/SA, No. 4266/4267), see accessories

MBW EC 355



Accessories

Wall bracket

Bracket for wall installation, from galvanised sheet steel.

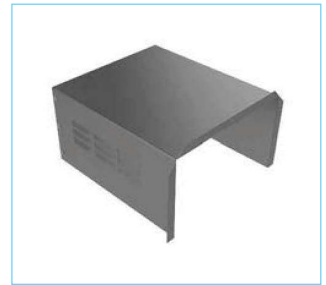
Type MB-WK EC355 No. 5528



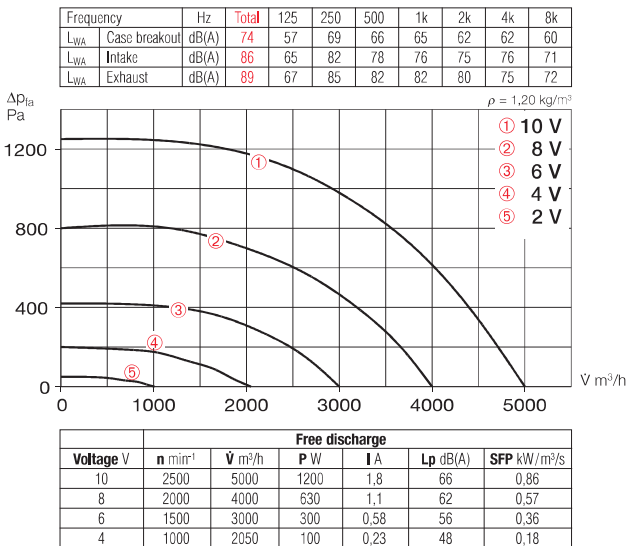
Rain repellent roof

For protected outdoor installation. Made from galvanised sheet steel. Mounted above motor.

Type MB-WSD EC355 No. 1865



MBD EC 355 A



Flexible sleeve

Supplied with two hose clips as standard; for installation between fan and duct system. Prevents sound and vibration transmission to ducting and corrects small site misalignments.

– max. temperature +70 °C

Type FM 355 No. 1675

– max. temperature +120 °C

Type FM 355 T120 No. 1658



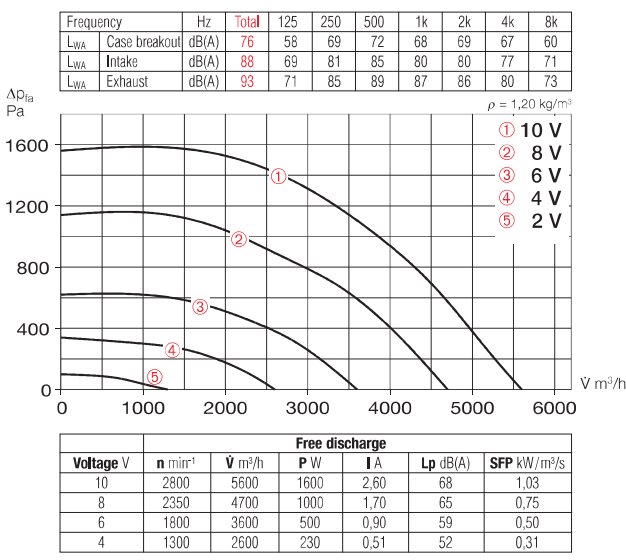
Universal control system

Type EUR EC Ref. no. 1347

For stepless control or regulation of single and three-phase EC fans with a setpoint input of 0–10V DC.



MBD EC 355 B



Speed-potentiometer

For direct control/setpoint specification for EC fans with potentiometer input.

Type PU 10 Ref. no. 1734

for flush mounted installation.

Type PA 10 Ref. no. 1735

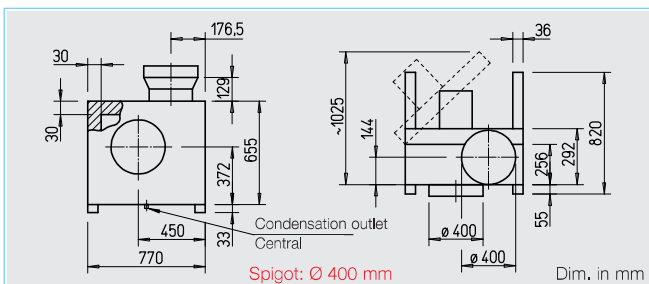
for surface mounted installation.



Accessory details Page

Universal control system, electronic controller, speed-potentiometer 539 on

MB EC



Casing

Casing, impeller, motor and sound levels see description on page 272.

Electrical connection

Standard terminal box (IP 55) on outside of motor.

Motor protection

Integrated electronic temperature monitoring for EC-motor and electronics. During exceedance of the maximum permitted temperatures an automatic reduction of speed is carried out, which is reset to the original set value after cooling.

Speed control

Stepless speed control with potentiometer or stepless speed control with universal control system (see table). Duties at different speeds are exemplarily given in the performance curve.

Accessories

Wall bracket

Made from galvanised sheet steel.
Type MB-WK EC400 No. 5528

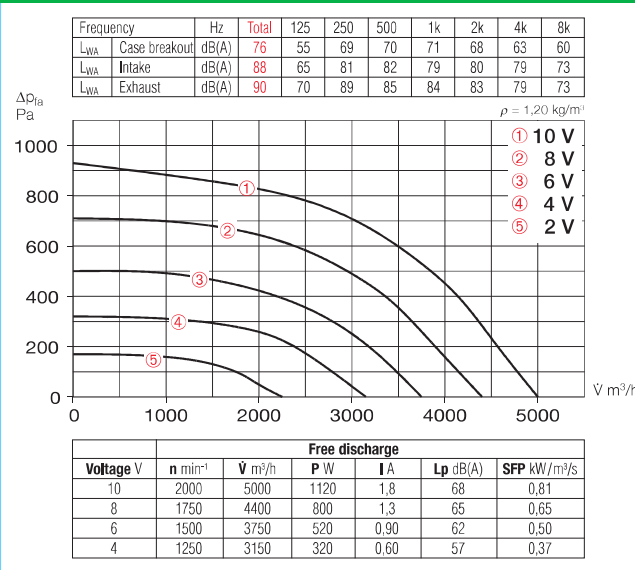
Rain repellent roof

Made from galvanised sheet steel, Mounted above motor.
Type MB-WSD EC400 No. 1865

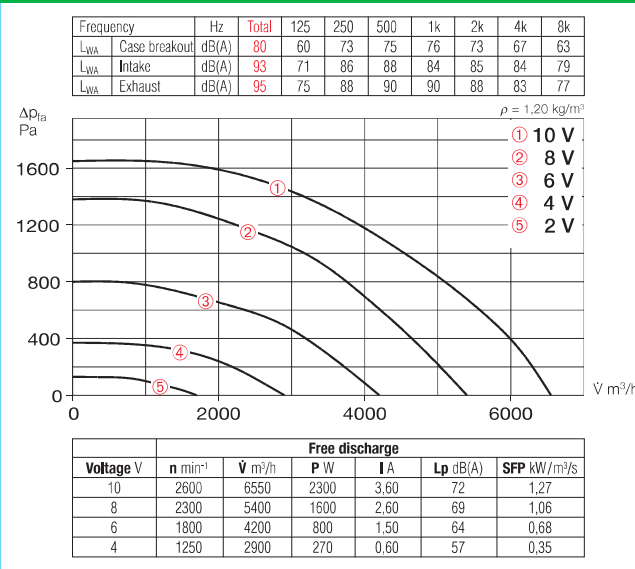
Flexible sleeve

for installation between fan and duct system.
– max. temperature +70 °C
Type FM 400 No. 1676
– max. temperature +120 °C
Type FM 400 T120 No. 1659

MBD EC 400 A



MBD EC 400 B



Type	Ref. no.	Connection Ø	Air flow volume (FID)	R.P.M.	Sound press. case breakout	Motor power	Current	Wiring diagram	max. air flow temperature	Weight net approx.	Universal control system		Speed-potentiometer flush		Speed-potentiometer surface	
											Type	Ref. no.	Type	Ref. no.	Type	Ref. no.
3 ph. motor 3~, 400 V, 50/60 Hz, EC motor, protection to IP 55																
MBD EC 400 A	5855	400	5000	2000	68	1.30	2.00	988	120	65.0	EUR EC ¹⁾²⁾	1347	PU 10 ¹⁾	1734	PA 10 ¹⁾	1735
MBD EC 400 B	5848	400	6550	2600	72	2.65	4.10	988	120	72.0	EUR EC ¹⁾²⁾	1347	PU 10 ¹⁾	1734	PA 10 ¹⁾	1735

1) several EC fans can normally be connected 2) alternative electronic differential pressure/temp. controller (EDR/ETR, No. 1437/1438) or three-step speed controller (SU/SA, No. 4266/4267), see accessories