

ETS

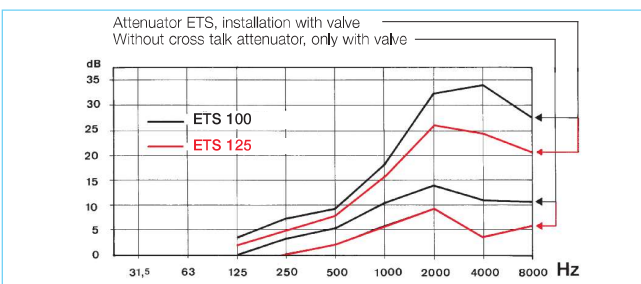
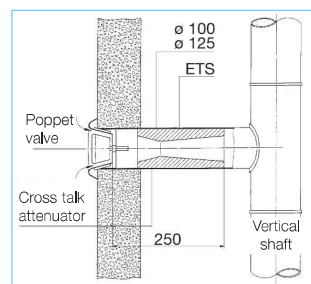
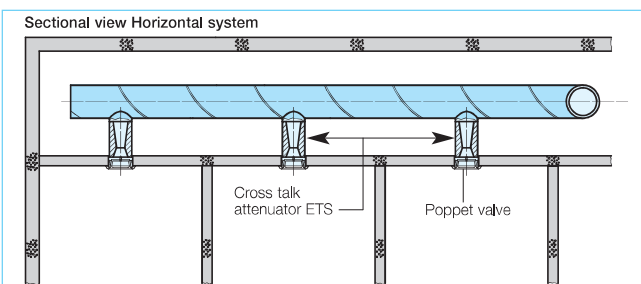


Installation example cross talk attenuator ETS (sliced)

Surprisingly simple and cost effective solution to reduce noise transmission in central ventilation systems. Easy installation direct into ducting behind the air valve.

Advantages

- Optimum solution for the prevention of noise transmission in ventilation ducting.
- Excellent attenuation figures (see diagram).
- Simple installation by inserting into duct behind the air valve.
- Virtually no additional resistance to the system, as the resistance value is below the setting value of the valve.
- Minimising system costs by using cost effective ducting.
- Can be used with any brand of valves.



Delivery range

Type ETS 100 Ref. no. 4521
Nominal duct Ø 100 mm

Type ETS 125 Ref. no. 4522
Nominal duct Ø 125 mm

Attenuation figure

The attenuation figure can be doubled if you have two facing rooms where both have an ETS attenuator in the ducting.

Material

Flexible polyurethane foam with improved reaction in case of fire, complies with DIN 4102, class B1, UL-94-HF 1, MVSS 302 among others.

