

In accordance with the European Construction Products Regulation, fire dampers required an EC certificate of conformity and declaration of performance since 01.07.2013. Helios BAK meet these European requirements.

Operation

Shutter to prevent fire and smoke transmission. Suitable for installation in ventilation shafts or walls which serve as fire section with required fire resistance class EI 90 S or K 90-4102. Suitable for wall and ceiling installation or as overflow opening in spiral ducting. In case of one-sided duct connection, mounting sleeve EH (accessories) recommended.

Function

When the ambient temperature of +72 °C is exceeded, the integrated thermal coupling releases the spring loaded semicircle blades. Two safety bows interlock the shutter blades.

Official approval

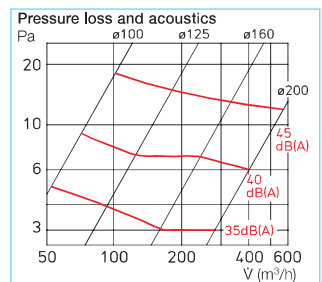
- With EC certificate of conformity and performance declaration according to European Construction Products Regulation 305/2011.
- Test according to EN 1366-2.
- Classified according to EN 13501-3: EI 90 (ve, ho, i→o) S – (300 Pa).
- Corresponds to European Product Standard DIN EN 15650.
- General Technical Approval from German Institute for Building Technology with no. Z-19.18-2180 and Z-41.3-695.

Special features

- Insertion in spiral ducting in space-enclosing component.

BAK

Approval Z-19.18-2180
EC certificate of conformity
BC1-606-0464-15650.69-2517



- For air flow in both directions, suitable for extract and supply air systems.
- Lower flow resistance even with high air flow volumes.
- Simple fixing through mounting sleeve (accessory).

Design

Cylindrical duct sleeve with butterfly shutter and integrated thermal coupling.

Delivery

Individually shrink-wrapped.

Installation and setting

- The installation and operating instructions contain the exact guideline relating to operation and installation.
- The specifications of the respective approval must be observed.

Accessories

Limit switch

To control BAK and report its operating status to the central building management system. For mounting on all DN, simple snap-in mounting.



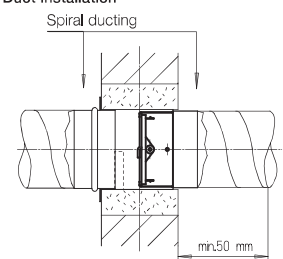
Type BA-S Ref. no. 2585
Switch as change-over IP 67
max. load 5–250 V / 6 A (2 A ind.)
Connect. cable 50 cm long / 3 x 0,34 mm²
Wiring diagram no. 830

Installation examples

□ Duct installation in wall or ceiling

The element is fixed by inserting into the spiral ducting or the mounting sleeve EH (accessories) and then mounted together to the wall, ceiling or shaft wall. Installation is independent from air flow direction. Completed with connection to ducting on both ends of the mounting sleeve.

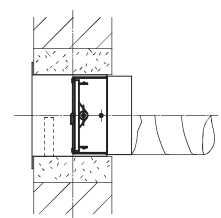
Duct installation



□ Wall installation

Via mounting sleeve EH (accessory) in walls of brick, thermolite block or plaster panel, shaft partition walls in F 90 and F 30 or system tested walls with more than 40 mm thickness. Suitable for installation in both directions, independent from air flow direction

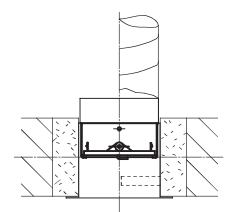
Wall installation in brick, thermolite block or plaster panel.



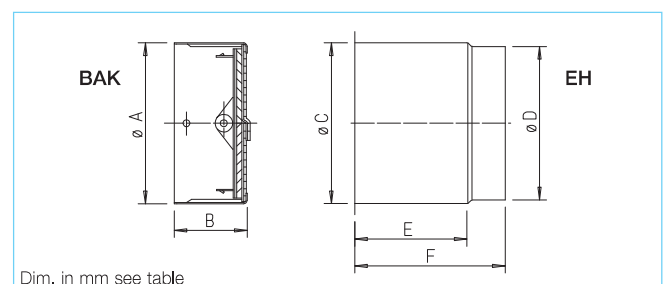
□ Overflow opening

The technical approval Z-19.18-2180 regulates the use as a shutter for overflow openings. Suitable for installation in tube sleeves from spiral ducting or mounting sleeve EH (accessories).

Ceiling installation in brick, thermolite block or plaster panel.



Ordering data					Accessories:					
Type	Ref. no.	Dim. in mm		Weight approx. kg	Mount. sleeve	Ref. no.	Dim. in mm			
		Ø A	B				Ø C	Ø D	E	F
BAK 100	2620	98	60	0,24	EH 100	2639	100	98	110	140
BAK 125	2621	123	60	0,32	EH 125	2640	125	123	110	140
BAK 160	2622	158	60	0,46	EH 160	2641	160	158	110	140
BAK 200	2623	198	60	0,64	EH 200	2642	200	198	110	140



Dim. in mm see table