

Operation

Shutter to prevent fire and smoke transmission. Suitable for installation in ventilation shafts and ducting with required fire resistance class K 90-18017. Suitable for insertion into spiral ducting or for wall installation with mounting sleeve EH (accessories) and non-fire-resistant suspended ceilings and fire-resistant ceilings as a damper.

Function

When the ambient temperature of +72 °C is exceeded, the integrated thermal coupling releases the spring loaded semicircle blades. Two safety bows interlock the shutter blades.

Official approval

The suitability of this shutter has been tested for use in ventilation systems to DIN 18017 and approved with the German Institute for Building Technology no. Z-41.3-696.

Special features

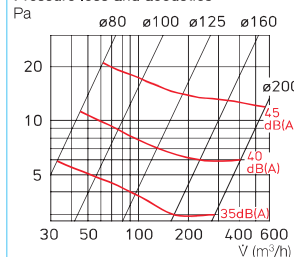
- ☐ Maintenance free.
- ☐ Cleaning and inspection together with the respective fan.
- ☐ Insertion in spiral ducting without additional wall mounting frame.
- ☐ Can be installed outside the shaft wall.
- ☐ For air flow in both directions, suitable for extract and supply air systems.
- ☐ Lower flow resistance even with high air flow volumes.
- ☐ Can be connected to fume extractors or cooker hoods.
- ☐ Low sound levels.
- ☐ Can also be used for commercial applications e.g. internal toilets, kitchenettes, etc.

BAE

Approval Z-41.3-696
maintenance-free



Pressure loss and acoustics



Design

Cylindrical duct sleeve with butterfly shutter and integrated thermal coupling.

Delivery

Individually shrink-wrapped.

Installation and setting

- ☐ The installation and operating instructions contain the exact guideline relating to operation and installation.
- ☐ The specifications of the respective approval must be observed.

Accessories

Limit switch

To control BAE and report its operating status to the central building management system. For mounting on all DN, simple snap-in mounting.



Type BA-S Ref. no. 2585

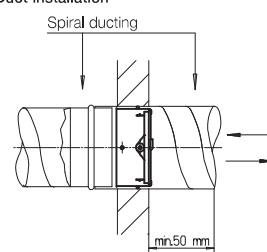
Switch as change-over IP 67
max. load 5–250 V / 6 A (2 A ind.)
Connect, cable 50 cm long / 3 x 0,34 mm²
Wiring diagram no. 830

Installation examples

Duct installation

The element is to be installed through simple insertion (e.g. in spiral ducting) and to be fixed together with the duct in the wall. Suitable for installation in both directions, independent from air flow direction.

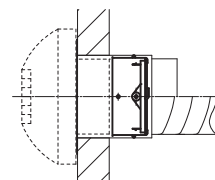
Duct installation



Wall installation

Via mounting sleeve EH (accessory) in walls of brick, thermolite block or plaster panel, shaft partition walls in F 90 and F 30 or system tested walls with more than 40 mm thickness. Suitable for installation in both directions, independent from air flow direction.

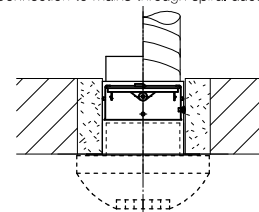
Wall installation with mounting sleeve or spiral duct and plug-in supply / extract air element.



Ceiling installation

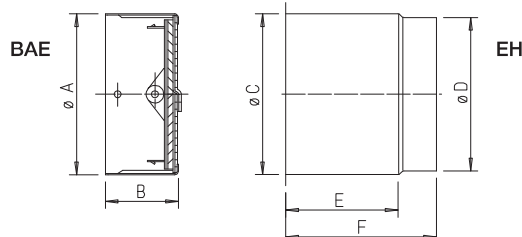
- Can be installed in non-fire-resistant suspended ceilings.
- Can be installed in fire-resistant ceilings as a damper unless a free cross-section is required.

Ceiling installation with mounting sleeve and plug-in supply / extract air element. Connection to mains through spiral ducting.



Ordering data

Type	Ref. no.	Dim. in mm		Weight approx. kg	Accessories:			
		Ø A	B		Mount. sleeve	Ref. no.	Dim. in mm	
							Ø C	Ø D E F
BAE 80	2624	78	60	0,17				
BAE 100	2625	98	60	0,23	EH 100	2639	100	98 110 140
BAE 125	2626	123	60	0,30	EH 125	2640	125	123 110 140
BAE 160	2627	158	60	0,40	EH 160	2641	160	158 110 140
BAE 200	2628	198	60	0,55	EH 200	2642	200	198 110 140



Dim. in mm see table